

Supporting Information

Guild-specific patterns of species richness and host specialization in plant-herbivore food webs from a tropical forest

Vojtech Novotny, Scott E. Miller, Leontine Baje, Solomon Balagawi, Yves Basset, Lukas Cizek, Kathleen J. Craft, Francesca Dem, Richard A. I. Drew, Jiri Hulcr, Jan Leps, Owen T. Lewis, Rapo Pokon, Alan J. A. Stewart, G. Allan Samuelson & George D. Weiblen

Appendix S1. Plant species sampled for herbivores. GenBank accession numbers in brackets. Plant families follow APG II (2003).

Achariaceae: *Pangium edule* Reinw. [AJ418801]; **Anacardiaceae:** *Dracontomelon dao* (Blanco) Merr. & Rolfe [FJ976128], *Spondias cytherea* Sonn. [SCU39274]; **Annonaceae:** *Cananga odorata* (Lam.) Hook. f. & Thomson [FJ976123], *Uvaria* sp. [FJ976180]; **Apocynaceae:** *Alstonia brassii* Monach. [FJ976117], *Cerbera manghas* L. [FJ976125], *Ochrosia coccinea* Miq. [AJ419752], *Ochrosia oppositifolia* K.Schum. [none], *Tabernaemontana aurantiaca* Gaudich. [FJ976175], *Tabernaemontana orientalis* R. Br. [FJ976176]; **Araliaceae:** *Osmoxylon sessiliflorum* (Lauterb.) Philipson [FJ976155], **Arecaceae:** *Arenga* cf. *microcarpa* Becc. [FJ976118], *Brassiophoenix schumannii* (Becc.) Essig [AJ404815], *Caryota rumphiana* Mart. [AY044620], *Hydriastele microspadix* (Becc.) Burret. [AJ404817]; **Burseraceae:** *Canarium acutifolium* (DC.) Merr. [FJ976124]; **Clusiaceae:** *Garcinia* cf. *hollrungii* Lauterb. [FJ976136], *Garcinia ledermannii* Laurerb. [FJ976137]; **Combretaceae:** *Terminalia* sp. [FJ976178]; **Elaeocarpaceae:** *Aceratium ledermannii* Schltr. [FJ976116]; **Euphorbiaceae:** *Codiaeum ludovicianum* Airy Shaw [AY374312 (ndhF) & AY788169 (rbcL)], *Endospermum labios* Schodde [AY374313 (ndhF) & AJ402950 (rbcL)], *Homalanthus novoguineensis* K. Schum. [AY374315], *Macaranga aleuritoides* F. Muell. [AY374319 (ndhF) & FJ976147 (rbcL)], *Macaranga* cf. *brachytricha* Airy Shaw [FJ976108], *Macaranga clavata* Warb. [FJ976109], *Macaranga densiflora* Warb. [AY374317], *Macaranga ducis* Whitmore [AY374321], *Macaranga fallacina* Pax & K.Hoffm. [FJ976110], *Macaranga novoguineensis* J.J.Sm. [AY374320], *Macaranga quadriglandulosa* Warb. [AY374318], *Mallotus mollissimus* (Geisel.) Airy Shaw [AY374322], *Melanolepis multiglandulosa* Rchb. & Zoll. [AY374323 (ndhF) & AY794914 (rbcL)], *Pimelodendron amboinicum* Hassk. [AY374324]; **Eupomatiaceae:** *Eupomatia laurina* R. Br. [L12644]; **Fabaceae:** *Maniltoa* cf. *plurijuga* Merr. & L.M.Perry [FJ976148], *Pterocarpus indicus* Willd. [FJ976168]; **Gnetaceae:** *Gnetum costatum* K. Schum. [AY296528], *Gnetum gnemon* L. [L12680]; **Heliconiaceae:** *Heliconia papuana* W.J. Kress [FJ976139]; **Lamiaceae:** *Callicarpa farinosa* Blume [FJ976122], *Gmelina moluccana* Backer ex K.Heyne [FJ976138], *Premna obtusifolia* R.Br. [FJ976163]; **Lauraceae:** *Litsea* sp. [FJ976145], *Litsea timoriana* Span. [FJ976146]; **Lecythidaceae:** *Barringtonia calyptrocalyx* K.Schum. [FJ976120], *Barringtonia* sp. [FJ976121]; **Loganiaceae:** *Neuburgia corynocarpa* (A.Gray) Leenh. [FJ976154]; **Malvaceae:** *Hibiscus tiliaceus* L. [AY289678], *Kleinhovia hospita* L. [FJ976142], *Microcos* sp. [FJ976150], *Pterocymbium beccarii* K. Schum. [FJ976169], *Sterculia schumanniana* (Lauterb.) Mildbr. [FJ976172], *Trichospermum pleiostigma* (F. Muell.) Kostermans [FJ976179], **Meliaceae:** *Aglaia cucullata* Pellegr. [AY128210], *Chisocheton montana* (Diels) Steenis [FJ976126], *Dysoxylum molle* Miq. [FJ976129], *Dysoxylum* sp. [FJ976130], **Monimiaceae:** *Kibara* cf. *coriacea* (Blume) Hook.f. & Thomson [FJ976141]; **Moraceae:** *Artocarpus camansi* Blanco [AF500345], *Artocarpus vriesianus* Miq. [FJ976119], *Ficus aurantiacafolia* Weiblen & Whitfeld [DQ367662], *Ficus bernaysii* King [AF165378], *Ficus botryocarpa* Miq. [AF165379], *Ficus congesta* Roxb. [AY730136], *Ficus conocephalifolia* Ridley [AF165381], *Ficus copiosa* Steud. [AF165382], *Ficus dammaropsis* Diels [AF165383], *Ficus gul* K. Schum. & Laut. [AY730132 (ITS) & FJ976131 (rbcL)], *Ficus hispidioides* S. Moore [AF165388], *Ficus mollior* F. Muell. ex Benth. [DQ367658], *Ficus nodosa* Teysm. & Binn. [AF165395], *Ficus pachyrrhachis* K. Schum. & Laut. [DQ367660], *Ficus phaeosyce* Laut. & K. Schum. [AF165401], *Ficus pungens* Reinw. ex Blume [AF165404], *Ficus rubrivestimenta* Weiblen & Whitfeld [DQ457093], *Ficus septica* Burm. f. [AF165409], *Ficus subtrinervia* Laut. et K. Schum. [AF165389], *Ficus trachypison* K. Schum. [AF165414], *Ficus variegata* Blume [AF165415 (ITS) & FJ976133 (rbcL)], *Ficus virens* Aiton

[AF165416], *Ficus wassa* Roxb. [AF165418 (ITS) & FJ976134 (rbcL)]; **Myristicaceae:** *Horsfeldia spicata* (Roxb.) J. Sinclair [FJ976140], *Myristica* cf. *sepicana* Foreman [FJ976152], *Myristica* sp. 1 [FJ976153], *Myristica* sp. 2 [none]; **Myrtaceae:** *Syzygium* cf. *pachycladum* (Lauterb. & K.Schum.) Merr. & L.M.Perry [none], *Syzygium* cf. *samarangense* (Blume) Merr. & L.M.Perry [none], *Syzygium* cf. *stipulare* Craven [pending], *Syzygium longipes* (Warb.) Merrill & Perry [FJ972835 (ITS) & FJ976173 (rbcL)], *Syzygium* sp. 1 [FJ972836 (ITS) & FJ976174 (rbcL)], *Syzygium* sp. 2 [FJ972837], *Syzygium* sp. 3 [none]; **Pandaceae:** *Galearia celebica* Koord. [FJ976135]; **Phyllanthaceae:** *Breynia cernua* (Poir.) Muell. Arg. [AY374311(ndhF) & AB233918 (rbcL)], *Phyllanthus lamprophyllus* Muell. Arg. [AY374325]; **Piperaceae:** *Piper macropiper* Pennant [FJ976159]; **Rubiaceae:** *Amaracarpus calcicola* Merr. & L.M.Perry [AJ002176], *Dolicholobium oxylobum* K.Schum. & Lauterb. [AJ318445], *Gardenia hansemannii* K. Schum. [AJ318446], *Morinda bracteata* Roxb. [FJ976151], *Mussaenda scratchleyi* Wernham [AJ318447], *Nauclea orientalis* (L.) L. [AJ318449], *Neonauclea clemensiae* Merr. & L.M.Perry [AJ318450], *Pavetta platyclada* K.Schum. & Lauterb. [AJ318451], *Psychotria leptothyrsa* Miq. [AJ318452], *Psychotria micralabastra* Valetton [AJ318453], *Psychotria micrococca* Valetton [AJ318454], *Psychotria ramuensis* Sohmer [AJ318455], *Psychotria* sp. [FJ976166], *Randia dryadum* (S.Moore) Merr. & L.M.Perry [FJ976170], *Randia schumanniana* Merr. & L.M.Perry [AJ318456], *Tarenna buruensis* Merr. [AJ318457], *Timonius timon* (Spreng.) Merr. [AJ318458], *Versteegia cauliflora* Valetton [AJ318459]; **Ruscaceae:** *Cordyline terminalis* Kunth [FJ976127], *Dracaena angustifolia* Roxb. [AB029848]; **Rutaceae:** *Lunasia amara* Blanco [AF066814]; **Salicaceae:** *Casearia erythrocarpa* Sleumer [AF206746]; **Sapindaceae:** *Pometia pinnata* Forster [FJ976161]; **Sapotaceae:** *Pouteria* sp. [FJ976162]; **Stemonuraceae:** *Medusanthera laxiflora* (Miers) R.A. Howard [FJ976149]; **Thymelaeaceae:** *Phaleria macrocarpa* Boerl. [FJ976156]; **Ulmaceae:** *Celtis philippensis* Blanco [AY263941]; **Urticaceae:** *Leucosyke capitellata* Wedd. [FJ976144]; **Verbenaceae:** *Teijsmanniodendron* sp. [FJ976177]; **Vitaceae:** *Leea indica* Merrill [FJ976143]; **Zingiberaceae:** *Hornstedtia scottiana* (F. Muell.) K. Schum. [AY298816].

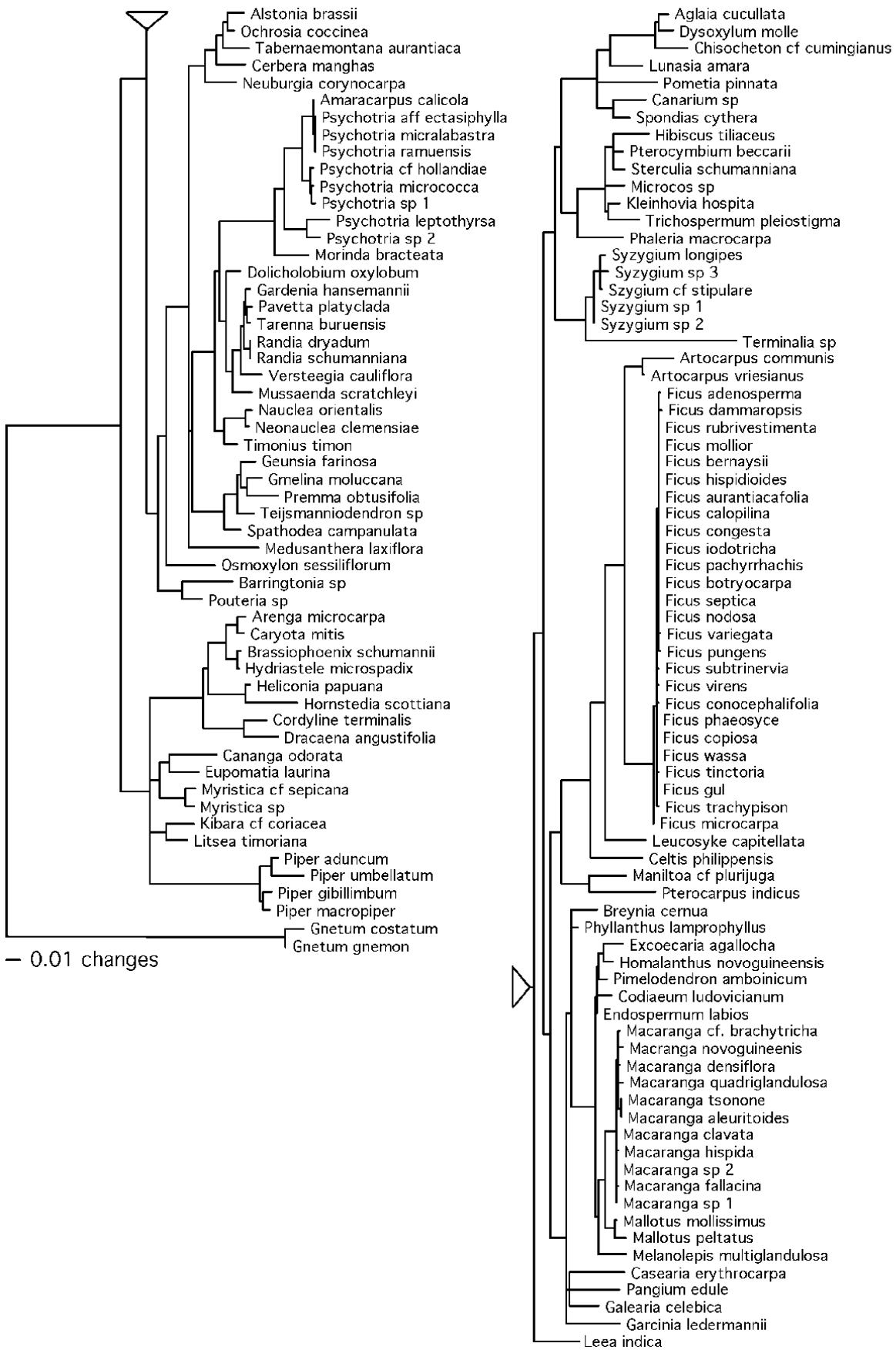


Fig. S1

Fig. S1. Phylogenetic relationships among the studied plant species.

Branch lengths are proportional to the number of nucleotide substitutions in *rbcL* sequences. Branch lengths for most clades were approximated using 1,285 base pairs of aligned chloroplast DNA encoding ribulose-1,5-bisphosphate carboxylase (*rbcL*) in 92 host plant species (Table S2, Appendix S1). Congeneric *rbcL* sequences from Genbank were substituted in 12 cases where DNA sequences could not be obtained from local host species. These included *Aceratium oppositifolium* for *Aceratium ledermannii*, *Amaracarpus* sp. for *Amaracarpus calcicola*, *Barringtonia apiculata* for *B. calyptrocalyx*, *Casearia sylvestris* for *C. erythrocarpa*, *Eupomatia bennettii* for *E. laurina*, *Garcinia latissima* for *G. cf. hollungii*, *Horsfeldia basifissa* for *H. spicata*, *Litsea collina* for *Litsea* sp., *Microcos argentata* for *Microcos* sp., *Phaleria* sp. for *P. macrocarpa*, *Terminalia complanata* for *Terminalia* sp., and *Uvaria rosenbergiana* for *Uvaria* sp. A general time-reversible model of molecular evolution with parameters for invariant sites and rate heterogeneity among sites (GTR+I+G) was selected according to the Aikake Information Criterion (Posada & Buckley 2004). Maximum likelihood (ML) heuristic searches were conducted with topological constraints enforced according to relationships among angiosperm clades supported by >90% bootstrap values in previous three-gene analyses (Soltis et al. 1998). This approach assumed the monophyly of families and orders classified according to angiosperm phylogeny (APG II 2003) with the advantage of avoiding spurious topology based on a limited community sample while resolving relationships among taxa not included in previous molecular systematic studies. Branch lengths were optimized with PAUP* (Swofford 1998) and GTR+I+G model parameters estimated from *rbcL* sequences on the ML tree. Phylogeny estimates for three locally diverse host plant clades were obtained by independent analyses of a gene encoding a subunit of NADH-plastoquinone oxidoreductase (*ndhF*) for Euphorbiaceae and the internal transcribed spacer region of nuclear ribosomal DNA (ITS) for *Ficus* (Moraceae) and *Syzygium* (Myrtaceae). Topologies and branch lengths were estimated for each clade separately according to the procedure outlined for *rbcL* except that topological constraints were not enforced. These independent phylogeny estimates were grafted to the *rbcL* phylogeny. Branch lengths estimated from *ndhF* and ITS were rescaled relative to *rbcL* using genetic distances between pairs of taxa in each of the three clades. The rate of ITS relative to *rbcL* molecular evolution in *Ficus*, for example, was calculated by dividing the number of *rbcL* substitutions per site under ML separating *F. microcarpa* from *F. variegata* by the number of ITS substitutions per site. In particular, *rbcL* sequences from *F. microcarpa* and *F. variegata* differed by 0.0039 substitutions per site compared to 0.0960 for ITS, yielding a rate of 0.041, by which ITS branch lengths were multiplied to express them in *rbcL* units on the community phylogeny. The rate for *Syzygium*, based on comparison of *S. longipes* and *Syzygium* sp. 1, was 0.289. The rate for *ndhF* relative to *rbcL* was 0.393 ± 0.0148 based on comparisons of substitutions per site among *Macaranga aleuritoides*, *Mallotus peltatus*, and *Melanolepis multiglandulosa*. We rescaled the branch lengths by these rates to approximate the phylogenetic distance between taxa sampled for genes with different rates of molecular divergence. The assumption of this method is that rates of divergence for each gene are homogeneous among community members.

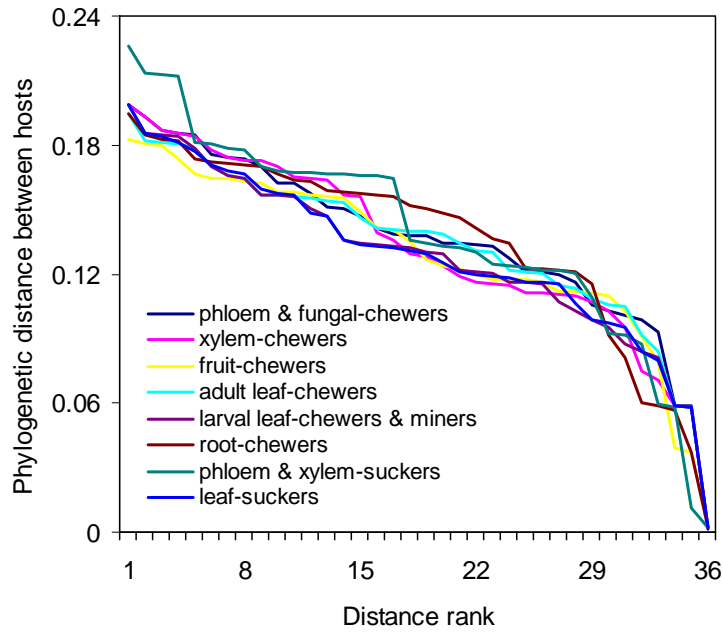


Fig. S2. Distribution of phylogenetic distances (D_{ij}) between all pairs formed from the nine plant species used for phylogenetic standardization in each guild (listed in Table S2).

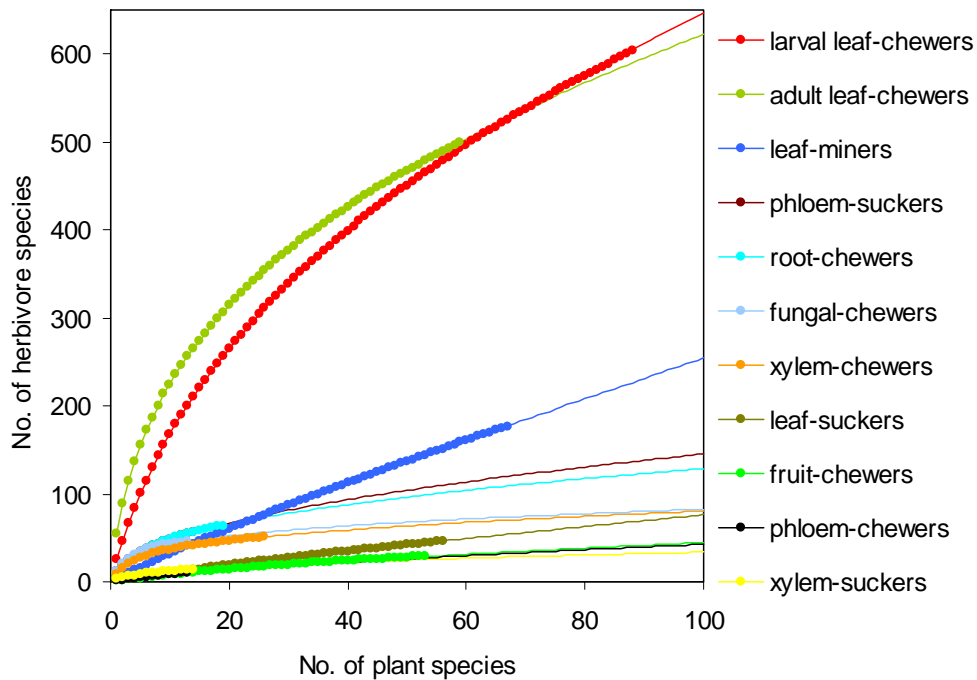


Fig. S3. Species accumulation of insect herbivores on rainforest plants. The Mao Tau species accumulation curves for herbivore species on increasing number of plant species, amalgamated in random order and extrapolated to 100 plant species using power functions.

Table S1. Plant - herbivore food webs used for the analysis.

S_p - the number of plant species sampled, S_h - the number of herbivore species, N_h - the number of herbivore individuals, T_{ph} - the number of distinct trophic interactions between plant and herbivore species. The raw data were standardized by excluding plant-herbivore combinations supported by only single feeding individuals, insect larvae not reared to adults, and poorly sampled plant species. The phylogenetic standardization limited the data to nine phylogenetically matched plant species for each guild. Insect orders (Coleoptera, Diptera, Hemiptera, Lepidoptera, Orthoptera, Phasmatodea) are abbreviated using first three letters. See Table 1 for details on each guild, Table S3 for plant species and Table S4 for herbivore species.

Guild	Raw data				Sampling standardised				Plant phylogeny standardised				Sampled taxa	Sampled	Ref.
	S_p	S_h	N_h	T_{ph}	S_p	S_h	N_h	T_{ph}	S_p	S_h	N_h	T_{ph}			
Adult leaf chewers	60	499	30901	3429	60	245	29331	1705	9	116	5005	300	Ort, Pha, Col	all spp.	Novotny et al. 2002
Fruit-chewers	139	38	7920	87	53	28	6344	43	9	10	459	11	Dip: Tephritidae	minority of spp.	Novotny et al. 2005
Fungal-chewers	13	46	56866	166	13	46	56866	166	9	43	49107	124	Col: Scolytinae, Platypodinae	majority of spp.	Hulcr et al. 2007
Larval leaf-chewers	88	572	49606	2028	88	326	19435	836	9	106	2376	137	Lep, Col	all spp.	Novotny et al. 2002
Leaf-miners	76	161	27934	255	76	124	9740	154	9	23	1578	24	Lep, Col, Dip	all spp.	Novotny et al. unpubl.
Leaf-suckers	56	47	900	58	56	36	870	43	9	7	51	7	Hem: Typhlocybininae	majority of spp.	Baje et al. unpubl.
Phloem-chewers	13	10	21404	16	13	10	21404	16	9	10	13332	14	Col: Scolytinae	majority of spp.	Hulcr et al. 2007
Phloem-suckers	14	38	898	113	14	29	1221	95	9	25	685	54	Hem: Auchenorrhyncha	minority of spp.	Dem et al. unpubl.
Root-chewers	21	98	2495	354	19	42	658	107	9	30	311	49	Col: Chrysomelidae	majority of spp.	Pokon et al. 2005
Xylem-chewers	32	56	4214	282	26	40	2480	165	9	25	950	61	Col: Cerambycidae	majority of spp.	Cizek et al. unpubl.
Xylem-suckers	14	11	84	30	14	10	161	23	9	6	54	12	Hem: Auchenorrhyncha	all spp.	Dem et al. unpubl.
Total	224	1490	203222	6818	129	896	148510	3353		377	73908	793			

Table S2. Plant species sampled for each herbivore guild.

AL-C: Adult leaf-chewers, Fr-C: Fruit-chewers, F-C: Fungal-chewers, LL-C: Larval leaf-chewers, L-M: Leaf-miners, L-S: Leaf-suckers, P-C: Phloem-chewers, P-S: Phloem-suckers, R-C: Root-chewers, X-C: Xylem-chewers, X-S: Xylem-suckers. Underlined markers (X) denote species used for phylogenetically standardized analysis. See Appendix S1 for full species names, family affiliation, and GenBank accession numbers.

No.	Plant species	AL-C	Fr-C	F-C	LL-C	L-M	L-S	P-C	P-S	R-C	X-C	X-S
1	<i>Aceratium ledermannii</i>		x									
2	<i>Aglaia cucullata</i>			<u>X</u>	x	x	x	<u>X</u>				<u>X</u>
3	<i>Alstonia brassii</i>			<u>X</u>				<u>X</u>				
4	<i>Amaracarpus calcicola</i>	x			x							
5	<i>Arenga cf. microcarpa</i>		x									
6	<i>Artocarpus camansi</i>	<u>X</u>		<u>X</u>	<u>X</u>	<u>X</u>	<u>X</u>	<u>X</u>	<u>X</u>	<u>X</u>	<u>X</u>	<u>X</u>
7	<i>Artocarpus vriesianus</i>		<u>X</u>									
8	<i>Barringtonia calyptrocalyx</i>		<u>X</u>									
9	<i>Barringtonia</i> sp.				x	x	x					
10	<i>Brassiophoenix schumannii</i>		x									
11	<i>Breynia cernua</i>	x			x	x	x					
12	<i>Canaga odorata</i>			x				x				
13	<i>Canarium acutifolium</i>		x									
14	<i>Caryota rumphiana</i>		x									
15	<i>Casearia erythrocarpa</i>	x			x	x	x					
16	<i>Celtis philippensis</i>	x			x	x					x	
17	<i>Cerbera manghas</i>		x									
18	<i>Chisocheton montana</i>		x									
19	<i>Codiaeum ludovicianum</i>	x			x	x						
20	<i>Cordyline terminalis</i>				x	x	x					
21	<i>Dolicholobium oxylobum</i>	x			x							
22	<i>Dracaena angustifolia</i>	x	x		x	x	x	x				x
23	<i>Dracontomelon dao</i>		x									
24	<i>Dysoxylum molle</i>		x									
25	<i>Dysoxylum</i> sp.		x									
26	<i>Endospermum labios</i>	x			x	x	x			x	x	
27	<i>Eupomatia laurina</i>	x			x	x	x					
28	<i>Ficus bernaysii</i>	x	x		x	x		<u>X</u>				<u>X</u>
29	<i>Ficus botryocarpa</i>	x	x		x	x	x					
30	<i>Ficus rubrivestimenta</i>				x							
31	<i>Ficus aurantiacafolia</i>				x							
32	<i>Ficus congesta</i>											
33	<i>Ficus conocephalifolia</i>	x	x		x	x	x					
34	<i>Ficus copiosa</i>	x	x		x	x	x	<u>X</u>				<u>X</u>
35	<i>Ficus dammaropsis</i>	x			x	x	x					
36	<i>Ficus gul</i>				x	x	x					
37	<i>Ficus hispidioides</i>	x	x		x	x				x		
38	<i>Ficus mollior</i>				x							
39	<i>Ficus nodosa</i>	<u>X</u>		<u>X</u>	<u>X</u>	<u>X</u>	<u>X</u>	<u>X</u>		<u>X</u>	<u>X</u>	
40	<i>Ficus pachyrrhachis</i>				x							
41	<i>Ficus phaeosyce</i>	x			x	x	x	x				x
42	<i>Ficus pungens</i>	x			x	x	x			<u>X</u>		
43	<i>Ficus septica</i>	x	x		x	x	x					
44	<i>Ficus subtrinervia</i>			<u>X</u>	x			<u>X</u>				
45	<i>Ficus trachypison</i>	x			x	x	x					
46	<i>Ficus variegata</i>	x	<u>X</u>		x	x	x			x		

Table S2 continued

No.	Plant species	AL- C	Fr- C	F- C	LL- C	L- M	L- S	P- C	P- S	R- C	X- C	X- S
47	<i>Ficus virens</i>										x	
48	<i>Ficus wassa</i>	<u>X</u>	<u>X</u>		<u>X</u>	<u>X</u>	<u>X</u>				<u>X</u>	
49	<i>Galearia celebica</i>		x									
50	<i>Garcinia cf. hollrungii</i>		x									
51	<i>Garcinia ledermannii</i>		x									
52	<i>Gardenia hansemannii</i>	x			x	x	x					
53	<i>Geunsia farinosa</i>				x	x	x			<u>X</u>		
54	<i>Gmelina moluccana</i>		<u>X</u>									
55	<i>Gnetum costatum</i>		x									
56	<i>Gnetum gnemon</i>	x	x		x	x		x			x	x
57	<i>Heliconia papuana</i>				x	x						
58	<i>Hibiscus tiliaceus</i>				x	x	<u>X</u>			<u>X</u>		
59	<i>Homalanthus novoguineensis</i>	x			x	x	x			x	x	
60	<i>Hornstedtia scottiana</i>				x	x						
61	<i>Horsfieldia spicata</i>		x									
62	<i>Hydriastele microspadix</i>	x			x	x	x					
63	<i>Kibara cf. coriacea</i>	x			x	x	x		x		x	x
64	<i>Kleinhovia hospita</i>				x	x	x			x		
65	<i>Leea indica</i>		x		x	x	x					
66	<i>Leucosyke capitellata</i>	x			x	x				x		
67	<i>Litsea sp.</i>		x									
68	<i>Litsea timoriana</i>			x	x	x	x	x				
69	<i>Lunasia amara</i>				x	x						
70	<i>Macaranga aleuritoides</i>	<u>X</u>		<u>X</u>	<u>X</u>	<u>X</u>		<u>X</u>	<u>X</u>	<u>X</u>		<u>X</u>
71	<i>Macaranga cf. brachytricha</i>	x			x	x	<u>X</u>			x		
72	<i>Macaranga clavata</i>				x							
73	<i>Macaranga densiflora</i>	x			x	x	x			x	x	
74	<i>Macaranga ducis</i>	x			x	x	x					
75	<i>Macaranga fallacina</i>				x							
76	<i>Macaranga novoguineensis</i>	x			x	x						
77	<i>Macaranga quadriglandulosa</i>	x			x	x	x		x			x
78	<i>Mallotus mollissimus</i>	x			x	x	x					
79	<i>Maniltoa cf. plurijuga</i>				x	x						
80	<i>Medusanthera laxiflora</i>		x									
81	<i>Melanolepis multiglandulosa</i>	x			x	x	x			x	x	
82	<i>Microcos sp.</i>		x									
83	<i>Morinda bracteata</i>	x	x		x	x						
84	<i>Mussaenda scratchleyi</i>	x			x	x						
85	<i>Myristica cf. sepicana</i>				x	x						
86	<i>Myristica sp. 1</i>			x				x			x	
87	<i>Myristica sp. 2</i>		x									
88	<i>Nauclea orientalis</i>	x	x		x						x	
89	<i>Neonauclea clemensiae</i>	x			x	x					<u>X</u>	
90	<i>Neuburgia corynocarpa</i>	<u>X</u>	<u>X</u>		<u>X</u>	<u>X</u>				<u>X</u>	<u>X</u>	
91	<i>Ochrosia coccinea</i>		x									
92	<i>Ochrosia oppositifolia</i>		x									
93	<i>Osmoxylon sessiliflorum</i>	<u>X</u>			x	x	x					
94	<i>Pangium edule</i>		x									
95	<i>Pavetta platyclada</i>	x			x	x	x		<u>X</u>			<u>X</u>
96	<i>Phaleria macrocarpa</i>		x									
97	<i>Phyllanthus lamprophyllus</i>	x			x							
98	<i>Pimelodendron amboinicum</i>	x	<u>X</u>		x	x	x				<u>X</u>	
99	<i>Piper macropiper</i>				x	x	x					

Table S2 continued

No.	Plant species	AL- C	Fr- C	F- C	LL- C	L- M	L- S	P- C	P- S	R- C	X- C	X- S
100	<i>Pometia pinnata</i>	<u>X</u>	<u>X</u>		<u>X</u>	<u>X</u>			<u>X</u>			<u>X</u>
101	<i>Pouteria</i> sp.			<u>X</u>	<u>X</u>	<u>X</u>	<u>X</u>					
102	<i>Premna obtusifolia</i>	<u>X</u>			x	x	x			<u>X</u>	x	
103	<i>Psychotria leptothyrsa</i>	x	x		x	x	x					
104	<i>Psychotria micralabastra</i>	x			x	x	x				x	
105	<i>Psychotria micrococca</i>	x			x	x	x		<u>X</u>			<u>X</u>
106	<i>Psychotria ramuensis</i>	x			x	x						
107	<i>Psychotria</i> sp.		x									
108	<i>Pterocarpus indicus</i>	x		x	x	x	x	x			x	
109	<i>Pterocymbium beccarii</i>			<u>X</u>		x	x	<u>X</u>				
110	<i>Randia dryadum</i>		x									
111	<i>Randia schumanniana</i>	x			x	x			<u>X</u>		x	<u>X</u>
112	<i>Spondias cytherea</i>		x									
113	<i>Sterculia schumanniana</i>	<u>X</u>			x	x	x			x	x	
114	<i>Syzygium</i> cf. <i>pachycladum</i>		x									
115	<i>Syzygium</i> cf. <i>samarangense</i>		x									
116	<i>Syzygium</i> cf. <i>stipulare</i>				x				<u>X</u>			<u>X</u>
117	<i>Syzygium longipes</i>		<u>X</u>		x	x	x					
118	<i>Syzygium</i> sp. 1				x	x	x					
119	<i>Syzygium</i> sp. 2				<u>X</u>	<u>X</u>	<u>X</u>					<u>X</u>
120	<i>Syzygium</i> sp. 3		x									
121	<i>Tabernaemontana aurantiaca</i>	x			x	x	<u>X</u>				x	
122	<i>Tabernaemontana orientalis</i>					x	x					
123	<i>Tarenna buruensis</i>	x			x							
124	<i>Teijsmanniodendron</i> sp.			<u>X</u>	<u>X</u>	<u>X</u>	<u>X</u>	<u>X</u>				<u>X</u>
125	<i>Terminalia</i> sp.		x									
126	<i>Timonius timon</i>	x			x	x	x				x	
127	<i>Trichospermum pleiostigma</i>				x	x	x			<u>X</u>		
128	<i>Uvaria</i> sp.		x									
129	<i>Versteegia cauliflora</i>	x	x		x							

Table S3. Herbivore species included in the food web analysis.

N - total number of individuals included in the analysis; * - species from the food webs on the phylogenetically standardized set of nine plant species (shown in Fig. 1). Species are ordered alphabetically by guilds, families and species. Morphospecies code is reported for unidentified species. In Lepidoptera, several cases of cryptic species are noted where 2 or 3 species can be distinguished only by genitalia or DNA, but share the same host plants, and we have not been able to separate all specimens. The Choreutidae does not yet include taxonomic revisions underway by Jadranka Rota.

Guild	Order	Family	Species	N
Adult leaf-chewers	Orthoptera	Acrididae	<i>Aiolopus thalasinus tamulus</i> (Fabricius)	2
Adult leaf-chewers	Orthoptera	Acrididae	<i>Gesonula mundata</i> Walker	55 *
Adult leaf-chewers	Orthoptera	Acrididae	<i>Oxya japonica vitticollis</i> (Blanchard)	45 *
Adult leaf-chewers	Orthoptera	Acrididae	<i>Rectitropis brunneri</i> Bolivar	133 *
Adult leaf-chewers	Orthoptera	Acrididae	<i>Stenocatantops angustifrons</i> (Walker)	87 *
Adult leaf-chewers	Orthoptera	Acrididae	<i>Valanga papuasica</i> Finot	289 *
Adult leaf-chewers	Orthoptera	Acrididae	<i>Willemsea bimaculata</i> Willemse	2
Adult leaf-chewers	Coleoptera	Anthribidae	Indet. [CHRY116]	2
Adult leaf-chewers	Coleoptera	Anthribidae	<i>Xenocerus equestris</i> Pascoe	2
Adult leaf-chewers	Coleoptera	Attelabidae	Indet. [CURC047]	12
Adult leaf-chewers	Coleoptera	Brentidae	Indet. [BREN002]	3
Adult leaf-chewers	Coleoptera	Buprestidae	<i>Habroloma</i> sp. complex [BUPR002]	27 *
Adult leaf-chewers	Coleoptera	Buprestidae	<i>Sambus?</i> sp. [BUPR004]	8 *
Adult leaf-chewers	Coleoptera	Cerambycidae	<i>Apomecyna proxima</i> Breuning	4
Adult leaf-chewers	Coleoptera	Cerambycidae	<i>Chloridolum</i> sp. nr. but not <i>papuanus</i> Gressitt	2
Adult leaf-chewers	Coleoptera	Cerambycidae	<i>Cylindrepomus?</i> sp. [CERA016]	2
Adult leaf-chewers	Coleoptera	Cerambycidae	<i>Dihammus australis</i> (Boisduval)	4 *
Adult leaf-chewers	Coleoptera	Cerambycidae	<i>Dihammus fasciatus</i> (Montrouzier)	22 *
Adult leaf-chewers	Coleoptera	Cerambycidae	<i>Dihammus</i> sp. [CERA051]	6 *
Adult leaf-chewers	Coleoptera	Cerambycidae	<i>Dihammus</i> sp. [CERA059]	2
Adult leaf-chewers	Coleoptera	Cerambycidae	<i>Epepeotes rarus</i> Thomson	42 *
Adult leaf-chewers	Coleoptera	Cerambycidae	<i>Glenea heptagoda</i> Thomson	19 *
Adult leaf-chewers	Coleoptera	Cerambycidae	<i>Glenea</i> sp. nr. <i>picta</i> Pascoe	140 *
Adult leaf-chewers	Coleoptera	Cerambycidae	<i>Glenea viridipustulata</i> Thomson	2 *
Adult leaf-chewers	Coleoptera	Cerambycidae	<i>Gnoma antilope</i> Boisduval	65 *
Adult leaf-chewers	Coleoptera	Cerambycidae	Acanthocinini gen. indet. [CERA007]	9
Adult leaf-chewers	Coleoptera	Cerambycidae	<i>Prosoplus</i> sp. [CERA020]	2 *
Adult leaf-chewers	Coleoptera	Cerambycidae	Bumetopini gen. indet. [CERA025]	7 *
Adult leaf-chewers	Coleoptera	Cerambycidae	Pteropliini/Niphonini gen. indet. [CERA034]	2
Adult leaf-chewers	Coleoptera	Cerambycidae	<i>Sybra</i> sp. [CERA076]	2
Adult leaf-chewers	Coleoptera	Cerambycidae	Indet. [CERA082]	2
Adult leaf-chewers	Coleoptera	Cerambycidae	<i>Tmesisternus</i> sp. [CERA125]	2
Adult leaf-chewers	Coleoptera	Cerambycidae	<i>Mulciber linnei</i> Thomson	3
Adult leaf-chewers	Coleoptera	Cerambycidae	<i>Mynonebra</i> sp. [CERA012]	3 *
Adult leaf-chewers	Coleoptera	Cerambycidae	<i>Olenecamptus bilobus strucki</i> Dillon & Dillon	2
Adult leaf-chewers	Coleoptera	Cerambycidae	<i>Pelargoderus rubropunctatus</i> (Guérin-Ménéville)	2
Adult leaf-chewers	Coleoptera	Cerambycidae	<i>Pelargoderus</i> sp. nr. <i>arouensis</i> (Thomson)	15
Adult leaf-chewers	Coleoptera	Cerambycidae	<i>Periaptodes testator</i> Pascoe	5
Adult leaf-chewers	Coleoptera	Cerambycidae	<i>Prosoplus</i> sp. [CERA020]	20 *
Adult leaf-chewers	Coleoptera	Cerambycidae	<i>Pterolophia</i> sp. [CERA010]	11 *
Adult leaf-chewers	Coleoptera	Cerambycidae	<i>Pterolophia</i> sp. [CERA013]	2
Adult leaf-chewers	Coleoptera	Cerambycidae	<i>Pterolophia</i> sp. [CERA024]	12 *
Adult leaf-chewers	Coleoptera	Cerambycidae	<i>Pterolophia</i> sp. [CERA081]	2
Adult leaf-chewers	Coleoptera	Cerambycidae	<i>Sybra</i> sp. [CERA015]	2
Adult leaf-chewers	Coleoptera	Cerambycidae	<i>Sybra</i> sp. [CERA052]	2
Adult leaf-chewers	Coleoptera	Cerambycidae	<i>Symphyletes</i> sp. nr. <i>defloratus</i> Pascoe	17
Adult leaf-chewers	Coleoptera	Cerambycidae	<i>Tmesisternus dissimilis</i> Pascoe	237 *
Adult leaf-chewers	Coleoptera	Cerambycidae	<i>Tmesisternus laterimaculatus</i> Gilmour	2
Adult leaf-chewers	Coleoptera	Cerambycidae	<i>Tmesisternus marmoratus</i> Guerin	208 *
Adult leaf-chewers	Coleoptera	Cerambycidae	<i>Tmesisternus monticola</i> Pascoe	41 *
Adult leaf-chewers	Coleoptera	Cerambycidae	<i>Tmesisternus nigrofasciatus</i> Aurivillius	8 *
Adult leaf-chewers	Coleoptera	Cerambycidae	<i>Tmesisternus oblongus</i> Boisduval	7

Table S3 continued

Guild	Order	Family	Species	N
Adult leaf-chewers	Coleoptera	Cerambycidae	<i>Tmesisternus politus</i> Blanchard	4
Adult leaf-chewers	Coleoptera	Cerambycidae	<i>Tmesisternus pseudosuperans</i> Breuning	20
Adult leaf-chewers	Coleoptera	Cerambycidae	<i>Tmesisternus</i> sp. nr. <i>longicollis</i> Gressitt	22 *
Adult leaf-chewers	Coleoptera	Cerambycidae	<i>Tmesisternus</i> sp. nr. <i>septempunctatus</i> Boisduval	56 *
Adult leaf-chewers	Coleoptera	Cerambycidae	<i>Tmesisternus trivittatus</i> Guerin-Meneville	76 *
Adult leaf-chewers	Coleoptera	Cerambycidae	<i>Trigonoptera pseudomaculata</i> Breuning	2
Adult leaf-chewers	Coleoptera	Cerambycidae	<i>Xiphoteota</i> sp. [CERA006]	3
Adult leaf-chewers	Coleoptera	Chrysomelidae	<i>Arsipoda</i> sp. [CHRY129]	87
Adult leaf-chewers	Coleoptera	Chrysomelidae	<i>Atysa</i> sp. [CHRY004]	122
Adult leaf-chewers	Coleoptera	Chrysomelidae	<i>Atysa</i> sp. nr. <i>terminalis</i> Baly	28
Adult leaf-chewers	Coleoptera	Chrysomelidae	<i>Aulacophora indica</i> Gmelin	46
Adult leaf-chewers	Coleoptera	Chrysomelidae	<i>Aulacophora propinqua</i> Baly	17
Adult leaf-chewers	Coleoptera	Chrysomelidae	<i>Aulacophora</i> sp. [CHRY041]	112 *
Adult leaf-chewers	Coleoptera	Chrysomelidae	<i>Aulacophora</i> sp. [CHRY066]	2
Adult leaf-chewers	Coleoptera	Chrysomelidae	<i>Aulacophora</i> sp. [CHRY067]	2
Adult leaf-chewers	Coleoptera	Chrysomelidae	<i>Aulacophora</i> sp. [CHRY110]	2
Adult leaf-chewers	Coleoptera	Chrysomelidae	<i>Aulacophora</i> sp. nr. <i>pallidifasciata</i> Jacoby	2
Adult leaf-chewers	Coleoptera	Chrysomelidae	<i>Buphonida submarginata</i> Baly	112
Adult leaf-chewers	Coleoptera	Chrysomelidae	<i>Cassena</i> sp. [CHRY091]	5
Adult leaf-chewers	Coleoptera	Chrysomelidae	<i>Cleorina</i> sp. [CHRY072]	227 *
Adult leaf-chewers	Coleoptera	Chrysomelidae	<i>Coenobius</i> sp. [CHRY043]	21 *
Adult leaf-chewers	Coleoptera	Chrysomelidae	<i>Dactylispa</i> sp. nov. [CHRY125]	79
Adult leaf-chewers	Coleoptera	Chrysomelidae	<i>Deretrichia</i> sp. [CHRY108]	27 *
Adult leaf-chewers	Coleoptera	Chrysomelidae	<i>Deretrichia</i> sp. [CHRY124]	13 *
Adult leaf-chewers	Coleoptera	Chrysomelidae	<i>Deretrichia</i> sp. [CHRY023]	9
Adult leaf-chewers	Coleoptera	Chrysomelidae	<i>Deretrichia</i> sp. [CHRY054]	275 *
Adult leaf-chewers	Coleoptera	Chrysomelidae	<i>Deretrichia</i> sp. [CHRY061]	2
Adult leaf-chewers	Coleoptera	Chrysomelidae	<i>Deretrichia</i> sp. [CHRY076]	15
Adult leaf-chewers	Coleoptera	Chrysomelidae	<i>Deretrichia</i> sp. [CHRY147]	5
Adult leaf-chewers	Coleoptera	Chrysomelidae	<i>Crepidodera</i> s. l. sp. [CHRY029]	111
Adult leaf-chewers	Coleoptera	Chrysomelidae	<i>Stethotes</i> sp. [CHRY118]	6
Adult leaf-chewers	Coleoptera	Chrysomelidae	Indet. [CHRY126]	75
Adult leaf-chewers	Coleoptera	Chrysomelidae	Indet. [CHRY144]	2 *
Adult leaf-chewers	Coleoptera	Chrysomelidae	Indet. [CHRY145]	11 *
Adult leaf-chewers	Coleoptera	Chrysomelidae	<i>Lema staudingeri</i> Jacoby	13 *
Adult leaf-chewers	Coleoptera	Chrysomelidae	<i>Lomirana</i> sp. nr. <i>sulcipennis</i> Jacoby	156 *
Adult leaf-chewers	Coleoptera	Chrysomelidae	<i>Melatia</i> sp. [CHRY085]	4
Adult leaf-chewers	Coleoptera	Chrysomelidae	<i>Melatia</i> sp. [CHRY090]	2
Adult leaf-chewers	Coleoptera	Chrysomelidae	<i>Melatia</i> sp. nr. <i>glochidionis</i> (Gressitt)	39
Adult leaf-chewers	Coleoptera	Chrysomelidae	<i>Microlepta</i> sp. [CHRY020]	88 *
Adult leaf-chewers	Coleoptera	Chrysomelidae	<i>Microlepta</i> sp. [CHRY103]	17
Adult leaf-chewers	Coleoptera	Chrysomelidae	<i>Monolepta</i> sp. [CHRY088]	28
Adult leaf-chewers	Coleoptera	Chrysomelidae	<i>Monolepta</i> sp. [CHRY089]	193
Adult leaf-chewers	Coleoptera	Chrysomelidae	<i>Monolepta</i> sp. [CHRY120]	5
Adult leaf-chewers	Coleoptera	Chrysomelidae	<i>Nisotra</i> or <i>Cassena</i> sp. [CHRY111]	2
Adult leaf-chewers	Coleoptera	Chrysomelidae	<i>Nisotra</i> sp. [CHRY068]	82 *
Adult leaf-chewers	Coleoptera	Chrysomelidae	<i>Poneridea australis</i> Boheman	49 *
Adult leaf-chewers	Coleoptera	Chrysomelidae	<i>Prasyptera</i> sp. nr. <i>ornata</i> Baly	191 *
Adult leaf-chewers	Coleoptera	Chrysomelidae	<i>Promechus bimaculatus</i> (Weise)	41 *
Adult leaf-chewers	Coleoptera	Chrysomelidae	<i>Rhyparida basalis</i> Baly	6 *
Adult leaf-chewers	Coleoptera	Chrysomelidae	<i>Rhyparida cacaovora</i> Gressitt	356 *
Adult leaf-chewers	Coleoptera	Chrysomelidae	<i>Rhyparida calami</i> Gressitt	90 *
Adult leaf-chewers	Coleoptera	Chrysomelidae	<i>Rhyparida coriacea</i> Jacoby	1225 *
Adult leaf-chewers	Coleoptera	Chrysomelidae	<i>Rhyparida fasciata</i> Baly	51 *
Adult leaf-chewers	Coleoptera	Chrysomelidae	<i>Rhyparida fruhstorferi</i> Jacoby	63 *
Adult leaf-chewers	Coleoptera	Chrysomelidae	<i>Rhyparida huona</i> Gressitt	726 *
Adult leaf-chewers	Coleoptera	Chrysomelidae	<i>Rhyparida lineolata</i> Gressitt	132 *
Adult leaf-chewers	Coleoptera	Chrysomelidae	<i>Rhyparida picticollis</i> Gressitt	122 *
Adult leaf-chewers	Coleoptera	Chrysomelidae	<i>Rhyparida pruinicollis</i> Gressitt	80 *
Adult leaf-chewers	Coleoptera	Chrysomelidae	<i>Rhyparida sinuata</i> Gressitt	136 *
Adult leaf-chewers	Coleoptera	Chrysomelidae	<i>Rhyparida</i> sp. [CHRY027]	31 *
Adult leaf-chewers	Coleoptera	Chrysomelidae	<i>Rhyparida</i> sp. [CHRY113]	22 *

Table S3 continued

Guild	Order	Family	Species	N	
Adult leaf-chewers	Coleoptera	Chrysomelidae	<i>Rhyparida</i> sp. [CHRY134]	2	*
Adult leaf-chewers	Coleoptera	Chrysomelidae	<i>Rhyparida</i> sp. nr. <i>impressipennis</i> Bryant	23	*
Adult leaf-chewers	Coleoptera	Chrysomelidae	<i>Rhyparida</i> sp. nr. <i>normalis</i> Gressitt	2	*
Adult leaf-chewers	Coleoptera	Chrysomelidae	<i>Rhyparidella casuarinae</i> Gressitt	2	
Adult leaf-chewers	Coleoptera	Chrysomelidae	<i>Rhyparidella sewana</i> group	73	*
Adult leaf-chewers	Coleoptera	Chrysomelidae	<i>Rhyparidella sobrina</i> group	1902	*
Adult leaf-chewers	Coleoptera	Chrysomelidae	<i>Rhyparidella</i> sp. [CHRY012]	2	
Adult leaf-chewers	Coleoptera	Chrysomelidae	<i>Rhyparidella</i> sp. [CHRY022]	2	*
Adult leaf-chewers	Coleoptera	Chrysomelidae	<i>Rhyparidella</i> sp. [CHRY032]	15	
Adult leaf-chewers	Coleoptera	Chrysomelidae	<i>Rhyparidella</i> sp. [CHRY044]	3	
Adult leaf-chewers	Coleoptera	Chrysomelidae	<i>Rhyparidella</i> sp. [CHRY155]	11	
Adult leaf-chewers	Coleoptera	Chrysomelidae	<i>Rhyparidella</i> sp. [CHRY160]	10	
Adult leaf-chewers	Coleoptera	Chrysomelidae	<i>Sastra limbata</i> Baly	4	*
Adult leaf-chewers	Coleoptera	Chrysomelidae	<i>Sastra</i> sp. [CHRY033]	56	*
Adult leaf-chewers	Coleoptera	Chrysomelidae	<i>Sastra</i> sp. nov. [CHRY038]	37	*
Adult leaf-chewers	Coleoptera	Chrysomelidae	<i>Stethodes</i> sp. nr. <i>melostomae</i> Gressitt	13	*
Adult leaf-chewers	Coleoptera	Chrysomelidae	<i>Stethotes lateralis</i> Baly	1014	*
Adult leaf-chewers	Coleoptera	Chrysomelidae	<i>Stethotes nigrifolia</i> Baly	2	*
Adult leaf-chewers	Coleoptera	Chrysomelidae	<i>Sutrea</i> sp. [CHRY142]	53	*
Adult leaf-chewers	Coleoptera	Chrysomelidae	<i>Thyrasia?</i> sp. [CHRY056]	120	*
Adult leaf-chewers	Coleoptera	Chrysomelidae	<i>Trachyaphthona</i> sp. [CHRY158]	4	
Adult leaf-chewers	Coleoptera	Chrysomelidae	<i>Trachyaphthona</i> sp. [CHRY159]	28	
Adult leaf-chewers	Coleoptera	Chrysomelidae	<i>Trachyaphthona</i> sp. [CHRY096]	33	
Adult leaf-chewers	Coleoptera	Chrysomelidae	<i>Xenidea</i> sp. [CHRY058]	8	
Adult leaf-chewers	Coleoptera	Curculionidae	<i>Aclees</i> sp. [CURC068]	2	
Adult leaf-chewers	Coleoptera	Curculionidae	<i>Alcidodes australis</i> Boisduval	117	*
Adult leaf-chewers	Coleoptera	Curculionidae	<i>Alcidodes elegans</i> (Guerin)	151	*
Adult leaf-chewers	Coleoptera	Curculionidae	<i>Alcidodes praeustus</i> Guerin	18	*
Adult leaf-chewers	Coleoptera	Curculionidae	<i>Alcidodes</i> sp. [CURC051]	2	
Adult leaf-chewers	Coleoptera	Curculionidae	<i>Alcidodes</i> sp. [CURC065]	11	
Adult leaf-chewers	Coleoptera	Curculionidae	<i>Alcidodes</i> sp. [CURC072]	2	
Adult leaf-chewers	Coleoptera	Curculionidae	<i>Apirocalus ebrius</i> Faust	2585	*
Adult leaf-chewers	Coleoptera	Curculionidae	<i>Behrensiellus glabratus</i> Pascoe	160	*
Adult leaf-chewers	Coleoptera	Curculionidae	<i>Celeuthetes</i> sp. [CURC009]	2	
Adult leaf-chewers	Coleoptera	Curculionidae	<i>Deretiosus aridus</i> Pascoe	4	
Adult leaf-chewers	Coleoptera	Curculionidae	<i>Elytrocheilus ruficollis</i> Faust	456	*
Adult leaf-chewers	Coleoptera	Curculionidae	<i>Eupholus geoffroyi</i> Guerin-Meneville	5	
Adult leaf-chewers	Coleoptera	Curculionidae	<i>Eutinophaea</i> sp. [CURC017]	19	
Adult leaf-chewers	Coleoptera	Curculionidae	<i>Imathia</i> sp. nr. <i>unicolor</i> Pascoe	2	
Adult leaf-chewers	Coleoptera	Curculionidae	<i>Oribius</i> sp. [CURC001]	1495	*
Adult leaf-chewers	Coleoptera	Curculionidae	Indet. [CURC006]	2	*
Adult leaf-chewers	Coleoptera	Curculionidae	<i>Oribius</i> sp. [CURC010]	2941	*
Adult leaf-chewers	Coleoptera	Curculionidae	<i>Oribius</i> sp. [CURC012]	4330	1
Adult leaf-chewers	Coleoptera	Curculionidae	Indet. [CURC026]	5	
Adult leaf-chewers	Coleoptera	Curculionidae	Indet. [CURC028]	3	
Adult leaf-chewers	Coleoptera	Curculionidae	Indet. [CURC031]	2	
Adult leaf-chewers	Coleoptera	Curculionidae	Indet. [CURC034]	5	
Adult leaf-chewers	Coleoptera	Curculionidae	Indet. [CURC038]	4	
Adult leaf-chewers	Coleoptera	Curculionidae	Indet. [CURC039]	2	
Adult leaf-chewers	Coleoptera	Curculionidae	Indet. [CURC042]	2	
Adult leaf-chewers	Coleoptera	Curculionidae	Indet. [CURC044]	2	
Adult leaf-chewers	Coleoptera	Curculionidae	Indet. [CURC053]	2	
Adult leaf-chewers	Coleoptera	Curculionidae	Indet. [CURC054]	3	
Adult leaf-chewers	Coleoptera	Curculionidae	Indet. [CURC055]	4	
Adult leaf-chewers	Coleoptera	Curculionidae	Indet. [CURC062]	2	
Adult leaf-chewers	Coleoptera	Curculionidae	Indet. [CURC067]	2	
Adult leaf-chewers	Coleoptera	Curculionidae	Indet. [CURC069]	8	
Adult leaf-chewers	Coleoptera	Curculionidae	Indet. [CURC075]	3	
Adult leaf-chewers	Coleoptera	Curculionidae	Indet. [CURC087]	13	*
Adult leaf-chewers	Coleoptera	Curculionidae	<i>Oribius</i> sp. [CURC033]	23	*
Adult leaf-chewers	Coleoptera	Curculionidae	<i>Orthorhinus</i> sp. [CURC023]	3	
Adult leaf-chewers	Coleoptera	Curculionidae	<i>Orthorhinus</i> sp. [CURC037]	13	

Table S3 continued

Guild	Order	Family	Species	N
Adult leaf-chewers	Coleoptera	Curculionidae	<i>Paepalosomus</i> sp. [CURC035]	11
Adult leaf-chewers	Coleoptera	Curculionidae	<i>Rhinoscapha doriae</i> Pascoe	17
Adult leaf-chewers	Coleoptera	Curculionidae	<i>Rhinoscapha tricolor</i> Faust	84 *
Adult leaf-chewers	Coleoptera	Curculionidae	<i>Rhynocophorus?</i> sp. [CURC048]	10
Adult leaf-chewers	Coleoptera	Curculionidae	<i>Trigonopterus</i> sp. [CURC027]	7
Adult leaf-chewers	Coleoptera	Curculionidae	<i>Viticiina?</i> sp. [CURC014]	2 *
Adult leaf-chewers	Coleoptera	Elateridae	<i>Adelocera</i> sp. [ELAT006]	8
Adult leaf-chewers	Coleoptera	Elateridae	<i>Agrypnus</i> sp. [ELAT004]	40 *
Adult leaf-chewers	Coleoptera	Elateridae	<i>Lacon</i> sp. [ELAT002]	12
Adult leaf-chewers	Coleoptera	Elateridae	<i>Lanelater aequalis</i> (Candeze)	2 *
Adult leaf-chewers	Coleoptera	Elateridae	<i>Simodactylus similis</i> (Candeze)	2
Adult leaf-chewers	Coleoptera	Elateridae	<i>Simodactylus</i> sp. [ELAT012]	2
Adult leaf-chewers	Orthoptera	Eumastacidae	<i>Biroella bolivari polita</i> (Bolivar)	72 *
Adult leaf-chewers	Orthoptera	Eumastacidae	<i>Biroella papuana</i> Bolivar	4
Adult leaf-chewers	Orthoptera	Eumastacidae	Indet. [ACRI009]	2
Adult leaf-chewers	Orthoptera	Eumastacidae	<i>Mnesiclesina furcata</i> (Saussure)	57 *
Adult leaf-chewers	Orthoptera	Eumastacidae	<i>Paramnesicles buergersi</i> (Bolivar)	110 *
Adult leaf-chewers	Phasmida	Heteronemiidae	<i>Leprocaulinus</i> sp. nr. <i>vipera</i> (B. von Wattenwyl)	36 *
Adult leaf-chewers	Phasmida	Heteronemiidae	<i>Leprocaulinus vipera vipera</i> Kaup	2
Adult leaf-chewers	Phasmida	Heteronemiidae	<i>Neopromachus lobatipes</i> (B. von Wattenwyl)	62 *
Adult leaf-chewers	Phasmida	Heteronemiidae	<i>Neopromachus vepres vepres</i> B. von Wattenwyl	218 *
Adult leaf-chewers	Phasmida	Heteronemiidae	<i>Neopromachus wallacei</i> (Westwood)	12 *
Adult leaf-chewers	Phasmida	Heteronemiidae	<i>Sipiloidea</i> sp. [PHAS037]	15
Adult leaf-chewers	Phasmida	Phasmatidae	<i>Anchiale maculata</i> (Olivier)	16 *
Adult leaf-chewers	Phasmida	Phasmatidae	<i>Dimorphodes prosthesis serripes</i> Redtenbacher	93 *
Adult leaf-chewers	Phasmida	Phasmatidae	<i>Eurycantha insularis</i> Lucas	27 *
Adult leaf-chewers	Phasmida	Phasmatidae	Indet. [PHAS007]	1356 *
Adult leaf-chewers	Phasmida	Phasmatidae	<i>Neopromachus</i> sp. [PHAS022]	21 *
Adult leaf-chewers	Orthoptera	Pyrgomorphidae	<i>Atractomorpha crenaticeps</i> (Blanchard)	572 *
Adult leaf-chewers	Orthoptera	Pyrgomorphidae	<i>Desmopterella biroi</i> (Bolivar)	2410 *
Adult leaf-chewers	Orthoptera	Pyrgomorphidae	<i>Doriaella paradoxa</i> (Bolivar)	4
Adult leaf-chewers	Orthoptera	Pyrgomorphidae	<i>Menesesia novaeguineae</i> Willemse	141 *
Adult leaf-chewers	Orthoptera	Pyrgomorphidae	<i>Stenoxypus aurantiacus</i> (Karsh)	277 *
Adult leaf-chewers	Coleoptera	Scarabaeidae	<i>Mimela</i> sp. [SCAR003]	4
Adult leaf-chewers	Coleoptera	Tenebrionidae	Indet. [CHRY115]	4
Adult leaf-chewers	Coleoptera	Tenebrionidae	Indet. [TENE005]	2 *
Adult leaf-chewers	Orthoptera	Tettigoniidae	<i>Aphroptera biroi</i> Bolivar	2
Adult leaf-chewers	Orthoptera	Tettigoniidae	<i>Aucaloplacella</i> sp. [TETT011]	15 *
Adult leaf-chewers	Orthoptera	Tettigoniidae	<i>Biroa</i> sp. [TETT041]	2
Adult leaf-chewers	Orthoptera	Tettigoniidae	<i>Caedicia</i> sp. [TETT049]	5
Adult leaf-chewers	Orthoptera	Tettigoniidae	<i>Conocephalus semivittatus</i> (Walker)	2
Adult leaf-chewers	Orthoptera	Tettigoniidae	<i>Ducetia</i> sp. [TETT036]	9
Adult leaf-chewers	Orthoptera	Tettigoniidae	<i>Eumecopoda cyrtoscelis</i> (Karsch)	12 *
Adult leaf-chewers	Orthoptera	Tettigoniidae	<i>Hexacentrus</i> sp. [TETT046]	2
Adult leaf-chewers	Orthoptera	Tettigoniidae	Indet. [TETT002]	10 *
Adult leaf-chewers	Orthoptera	Tettigoniidae	Indet. [TETT006]	9
Adult leaf-chewers	Orthoptera	Tettigoniidae	Indet. [TETT018]	8 *
Adult leaf-chewers	Orthoptera	Tettigoniidae	Indet. [TETT025]	2
Adult leaf-chewers	Orthoptera	Tettigoniidae	Indet. [TETT035]	9
Adult leaf-chewers	Orthoptera	Tettigoniidae	Indet. [TETT038]	20
Adult leaf-chewers	Orthoptera	Tettigoniidae	Indet. [TETT040]	2 *
Adult leaf-chewers	Orthoptera	Tettigoniidae	Indet. [TETT044]	64 *
Adult leaf-chewers	Orthoptera	Tettigoniidae	Indet. [TETT045]	35 *
Adult leaf-chewers	Orthoptera	Tettigoniidae	Indet. [TETT052]	2
Adult leaf-chewers	Orthoptera	Tettigoniidae	Indet. [TETT054]	2
Adult leaf-chewers	Orthoptera	Tettigoniidae	Indet. [TETT058]	2
Adult leaf-chewers	Orthoptera	Tettigoniidae	Indet. [TETT069]	2
Adult leaf-chewers	Orthoptera	Tettigoniidae	<i>Phaneroptera</i> sp. [TETT023]	29 *
Adult leaf-chewers	Orthoptera	Tettigoniidae	<i>Phyllophora</i> cf. <i>bispinosa</i> Thompson	4 *
Adult leaf-chewers	Orthoptera	Tettigoniidae	<i>Phyllophora</i> sp. [TETT001]	3 *
Adult leaf-chewers	Orthoptera	Tettigoniidae	<i>Phyllophora</i> sp. [TETT012]	15
Adult leaf-chewers	Orthoptera	Tettigoniidae	<i>Phyllophorella</i> sp. [TETT010]	2

Table S3 continued

Guild	Order	Family	Species	N	No.
Adult leaf-chewers	Orthoptera	Tettigoniidae	<i>Pseudonicsara aerugifrons</i> (Karny)	2	
Adult leaf-chewers	Orthoptera	Tettigoniidae	<i>Psyrana</i> ? sp. [TETT022]	282	*
Adult leaf-chewers	Orthoptera	Tettigoniidae	<i>Psyrana</i> ? sp. [TETT043]	38	
Adult leaf-chewers	Orthoptera	Tettigoniidae	<i>Psyrana</i> ? sp. [TETT048]	2	
Adult leaf-chewers	Orthoptera	Tettigoniidae	<i>Sasima aequalis</i> Karny	7	
Adult leaf-chewers	Orthoptera	Tettigoniidae	<i>Tympanoptera</i> cf. <i>buergersi</i> Beier	37	*
Adult leaf-chewers	Orthoptera	Tettigoniidae	<i>Tympanoptera</i> sp. [TETT027]	4	*
Fruit-chewers	Diptera	Tephritidae	<i>Euphranta perkinsi</i> Hardy	68	
Fruit-chewers	Diptera	Tephritidae	<i>Adrama selecta</i> Walker	4	*
Fruit-chewers	Diptera	Tephritidae	<i>Bactrocera bancroftii</i> (Tryon)	13	*
Fruit-chewers	Diptera	Tephritidae	<i>Bactrocera bullata</i> Drew	429	
Fruit-chewers	Diptera	Tephritidae	<i>Bactrocera cheesmanae</i> (Perkins)	27	
Fruit-chewers	Diptera	Tephritidae	<i>Bactrocera diaphana</i> (Hering)	3	*
Fruit-chewers	Diptera	Tephritidae	<i>Bactrocera enochra</i> (Drew)	3	
Fruit-chewers	Diptera	Tephritidae	<i>Bactrocera frauenfeldi</i> (Schiner)	84	*
Fruit-chewers	Diptera	Tephritidae	<i>Bactrocera hastigerina</i> (Hardy)	50	
Fruit-chewers	Diptera	Tephritidae	<i>Bactrocera lineata</i> (Perkins)	37	*
Fruit-chewers	Diptera	Tephritidae	<i>Bactrocera neocheesmanae</i> Drew	469	
Fruit-chewers	Diptera	Tephritidae	<i>Bactrocera penefurva</i> Drew	41	
Fruit-chewers	Diptera	Tephritidae	<i>Bactrocera</i> sp. 01	917	
Fruit-chewers	Diptera	Tephritidae	<i>Bactrocera</i> sp. 02	154	
Fruit-chewers	Diptera	Tephritidae	<i>Bactrocera</i> sp. 03	528	
Fruit-chewers	Diptera	Tephritidae	<i>Bactrocera</i> sp. 04	72	
Fruit-chewers	Diptera	Tephritidae	<i>Bactrocera</i> sp. 05	110	
Fruit-chewers	Diptera	Tephritidae	<i>Bactrocera</i> sp. 08	15	
Fruit-chewers	Diptera	Tephritidae	<i>Bactrocera</i> sp. 09	4	
Fruit-chewers	Diptera	Tephritidae	<i>Bactrocera</i> sp. 10	2119	
Fruit-chewers	Diptera	Tephritidae	<i>Bactrocera</i> sp. 11	9	*
Fruit-chewers	Diptera	Tephritidae	<i>Bactrocera</i> sp. 12	8	*
Fruit-chewers	Diptera	Tephritidae	<i>Bactrocera</i> sp. 13	37	
Fruit-chewers	Diptera	Tephritidae	<i>Bactrocera tinomiscii</i> Drew	3	
Fruit-chewers	Diptera	Tephritidae	<i>Bactrocera trivialis</i> (Drew)	498	*
Fruit-chewers	Diptera	Tephritidae	<i>Euphranta marginata</i> Hardy	258	*
Fruit-chewers	Diptera	Tephritidae	<i>Euphranta quatei</i> Hardy	14	*
Fruit-chewers	Diptera	Tephritidae	<i>Euphranta</i> sp.	370	
Fungal-feeders	Coleoptera	Curculionidae	<i>Amasa resectus</i> (Eggers)	109	*
Fungal-feeders	Coleoptera	Curculionidae	<i>Ambrosiodmus funereus</i> (Lea)	15	*
Fungal-feeders	Coleoptera	Curculionidae	<i>Arixyleborus canaliculatus</i> (Eggers)	59	*
Fungal-feeders	Coleoptera	Curculionidae	<i>Arixyleborus</i> sp. cf. <i>morio</i> (Eggers)	68	*
Fungal-feeders	Coleoptera	Curculionidae	<i>Cnestus bimaculatus</i> (Eggers)	15	*
Fungal-feeders	Coleoptera	Curculionidae	<i>Cnestus pseudosuturalis</i> Schedl	33	*
Fungal-feeders	Coleoptera	Curculionidae	<i>Coptodyras parva</i> (Lea)	778	*
Fungal-feeders	Coleoptera	Curculionidae	<i>Crossotarsus biconcavus</i> Schedl	102	*
Fungal-feeders	Coleoptera	Curculionidae	<i>Crossotarsus kuntzei</i> (Schedl)	370	*
Fungal-feeders	Coleoptera	Curculionidae	<i>Crossotarsus lacordairei</i> Chapuis	73	*
Fungal-feeders	Coleoptera	Curculionidae	<i>Crossotarsus minusculus</i> Chapuis	539	*
Fungal-feeders	Coleoptera	Curculionidae	<i>Cyclorhipidion agnatum</i> (Eggers)	88	
Fungal-feeders	Coleoptera	Curculionidae	<i>Diapus pussilimus</i> Chapuis	1963	*
Fungal-feeders	Coleoptera	Curculionidae	<i>Dinoplatypus pallidus</i> Chapuis	4466	*
Fungal-feeders	Coleoptera	Curculionidae	<i>Eccoapterus spinosus</i> (Olivier)	149	*
Fungal-feeders	Coleoptera	Curculionidae	<i>Euwallacea bicolor</i> (Blandford)	97	*
Fungal-feeders	Coleoptera	Curculionidae	<i>Euwallacea destruens</i> (Blandford)	71	*
Fungal-feeders	Coleoptera	Curculionidae	<i>Euwallacea fornicatus</i> (Eichhoff)	209	*
Fungal-feeders	Coleoptera	Curculionidae	<i>Euwallacea piceus</i> (Motschulsky)	506	*
Fungal-feeders	Coleoptera	Curculionidae	<i>Euwallacea talumalai</i> (Browne)	185	*
Fungal-feeders	Coleoptera	Curculionidae	<i>Euwallacea wallacei</i> (Blandford)	23	*
Fungal-feeders	Coleoptera	Curculionidae	<i>Hadrodemius globus</i> (Blandford)	13	*
Fungal-feeders	Coleoptera	Curculionidae	<i>Leptoxyleborus concisus</i> (Blandford)	55	*
Fungal-feeders	Coleoptera	Curculionidae	<i>Microporus intermedius</i> (Eggers)	785	*
Fungal-feeders	Coleoptera	Curculionidae	<i>Platypus excedens</i> Chapuis	14837	*
Fungal-feeders	Coleoptera	Curculionidae	<i>Platypus jansoni</i> Chapuis	1230	*
Fungal-feeders	Coleoptera	Curculionidae	<i>Platypus</i> sp. nr. <i>rasilis</i> Roberts	8	*

Table S3 continued

Guild	Order	Family	Species	N	
Fungal-feeders	Coleoptera	Curculionidae	<i>Platypus tayabasi</i> Schedl	27	*
Fungal-feeders	Coleoptera	Curculionidae	<i>Treptoplatypus solidus</i> (Walker)	63	*
Fungal-feeders	Coleoptera	Curculionidae	<i>Xyleborinus andrewesi</i> (Blandford)	220	*
Fungal-feeders	Coleoptera	Curculionidae	<i>Xyleborinus perexiguus</i> (Schedl)	2213	*
Fungal-feeders	Coleoptera	Curculionidae	<i>Xyleborus affinis</i> Eichhoff	1070	*
Fungal-feeders	Coleoptera	Curculionidae	<i>Xyleborus approximatus</i> Schedl	5	
Fungal-feeders	Coleoptera	Curculionidae	<i>Xyleborus bispinatus</i> Eichhoff	41	*
Fungal-feeders	Coleoptera	Curculionidae	<i>Xyleborus biuncus</i> Browne	5	*
Fungal-feeders	Coleoptera	Curculionidae	<i>Xyleborus dentatulus</i> Browne	195	*
Fungal-feeders	Coleoptera	Curculionidae	<i>Xyleborus duodecimspinus</i> Schedl	34	*
Fungal-feeders	Coleoptera	Curculionidae	<i>Xyleborus emarginatus</i> Eichhoff	74	
Fungal-feeders	Coleoptera	Curculionidae	<i>Xyleborus fallax</i> Eichhoff	13	*
Fungal-feeders	Coleoptera	Curculionidae	<i>Xyleborus immersus</i> Schedl	18	*
Fungal-feeders	Coleoptera	Curculionidae	<i>Xyleborus perforans</i> Wollaston	23466	*
Fungal-feeders	Coleoptera	Curculionidae	<i>Xyleborus pumilus</i> Eggers	784	*
Fungal-feeders	Coleoptera	Curculionidae	<i>Xyleborus similis</i> Ferrari	641	*
Fungal-feeders	Coleoptera	Curculionidae	<i>Xyleborus volvulus</i> Fabricius	245	*
Fungal-feeders	Coleoptera	Curculionidae	<i>Xylosandrus crassiusculus</i> (Motschulsky)	874	*
Fungal-feeders	Coleoptera	Curculionidae	<i>Xylosandrus morigerus</i> (Blandford)	32	*
Larval leaf-chewers	Lepidoptera	Arctiidae	<i>Chamaita metamelaena</i> Hampson	3	
Larval leaf-chewers	Lepidoptera	Arctiidae	<i>Spilosoma niceta</i> Stoll	14	
Larval leaf-chewers	Lepidoptera	Bombycidae	<i>Elachyophthalma</i> sp. cf. <i>kebeae</i> Bethune-Baker	7	
Larval leaf-chewers	Lepidoptera	Choreutidae	<i>Brenthia salaconia</i> Meyrick	146	
Larval leaf-chewers	Lepidoptera	Choreutidae	<i>Brenthia</i> sp. [CHOR003]	2	
Larval leaf-chewers	Lepidoptera	Choreutidae	<i>Brenthia</i> sp. [CHOR008]	127	*
Larval leaf-chewers	Lepidoptera	Choreutidae	<i>Brenthia</i> sp. [CHOR009]	33	*
Larval leaf-chewers	Lepidoptera	Choreutidae	<i>Brenthia</i> sp. [CHOR012]	82	
Larval leaf-chewers	Lepidoptera	Choreutidae	<i>Brenthia</i> sp. [CHOR016]	10	
Larval leaf-chewers	Lepidoptera	Choreutidae	<i>Brenthia</i> sp. [TORT015]	59	*
Larval leaf-chewers	Lepidoptera	Choreutidae	<i>Brenthia</i> sp. nov. [CHOR001]	75	*
Larval leaf-chewers	Lepidoptera	Choreutidae	<i>Choreutis basalis</i> (Felder & Rogenhofer)	69	*
Larval leaf-chewers	Lepidoptera	Choreutidae	<i>Choreutis lutescens</i> (Felder & Rogenhofer)	88	*
Larval leaf-chewers	Lepidoptera	Choreutidae	<i>Choreutis</i> sp. [CHOR011]	4	
Larval leaf-chewers	Lepidoptera	Choreutidae	<i>Choreutis</i> sp. [TORT005]	646	*
Larval leaf-chewers	Lepidoptera	Choreutidae	<i>Choreutis</i> sp. nr. <i>amethystodes</i> (Meyrick)	15	*
Larval leaf-chewers	Lepidoptera	Choreutidae	<i>Litobrenthia</i> sp. nr. <i>albimaculana</i> (Snellen)	33	
Larval leaf-chewers	Lepidoptera	Choreutidae	<i>Saptha</i> sp. cf. <i>exanthista</i> (Meyrick) & <i>divitiosa</i> Walker	32	
Larval leaf-chewers	Lepidoptera	Choreutidae	<i>Saptha libanota</i> (Meyrick)	3	
Larval leaf-chewers	Coleoptera	Chrysomelidae	<i>Buphonida submarginata</i> Baly	477	
Larval leaf-chewers	Coleoptera	Chrysomelidae	<i>Dicladispa cincta</i> (Gestro)	20	
Larval leaf-chewers	Coleoptera	Chrysomelidae	Indet. [CHRY167]	3	
Larval leaf-chewers	Coleoptera	Chrysomelidae	Indet. [CHRY218]	27	
Larval leaf-chewers	Coleoptera	Chrysomelidae	Indet. [CHRY219]	91	
Larval leaf-chewers	Coleoptera	Chrysomelidae	<i>Promechus bimaculatus</i> (Weise)	134	
Larval leaf-chewers	Lepidoptera	Crambidae	<i>Agrotera coelatalis</i> Walker [2 cryptic species]	185	*
Larval leaf-chewers	Lepidoptera	Crambidae	<i>Agrotera ignepictoides</i> Rothschild	48	*
Larval leaf-chewers	Lepidoptera	Crambidae	<i>Agrotera</i> sp. nr. but not <i>effertalis</i> Walker	15	*
Larval leaf-chewers	Lepidoptera	Crambidae	<i>Agrotera</i> sp. nr. <i>basinotata</i> Hampson	18	*
Larval leaf-chewers	Lepidoptera	Crambidae	<i>Bacotoma illatalis</i> (Walker)	3	
Larval leaf-chewers	Lepidoptera	Crambidae	<i>Chalcidoptera emissalis</i> (Walker)	24	*
Larval leaf-chewers	Lepidoptera	Crambidae	" <i>Coelorhycidia</i> " <i>nitidalis</i> Hampson	29	*
Larval leaf-chewers	Lepidoptera	Crambidae	<i>Cotachena fuscimarginalis</i> Hampson	214	
Larval leaf-chewers	Lepidoptera	Crambidae	<i>Cotachena histricalis</i> (Walker)	8	*
Larval leaf-chewers	Lepidoptera	Crambidae	<i>Cotachena</i> sp. nov. [CRAM061]	8	
Larval leaf-chewers	Lepidoptera	Crambidae	<i>Cydalima diaphanal</i> complex [2 species]	34	
Larval leaf-chewers	Lepidoptera	Crambidae	<i>Cydalima marginalis</i> (Kenrick)	30	
Larval leaf-chewers	Lepidoptera	Crambidae	<i>Glyphodes caesalis</i> Walker	4	
Larval leaf-chewers	Lepidoptera	Crambidae	<i>Glyphodes doleschalii</i> Lederer	7	
Larval leaf-chewers	Lepidoptera	Crambidae	<i>Glyphodes eurygania</i> Druce	30	
Larval leaf-chewers	Lepidoptera	Crambidae	<i>Glyphodes margaritaria</i> (Clerck)	175	*
Larval leaf-chewers	Lepidoptera	Crambidae	<i>Glyphodes pseudocaesalis</i> Kenrick	249	*
Larval leaf-chewers	Lepidoptera	Crambidae	<i>Glyphodes</i> sp. cf. <i>stolalis</i> Guenee	39	*

Table S3 continued

Guild	Order	Family	Species	N	
Larval leaf-chewers	Lepidoptera	Crambidae	<i>Haritalodes adjunctalis</i> Leraut	314	*
Larval leaf-chewers	Lepidoptera	Crambidae	<i>Herpetogramma bractealis</i> (Kenrick)	11	*
Larval leaf-chewers	Lepidoptera	Crambidae	<i>Herpetogramma exculta</i> (Lucas)	358	
Larval leaf-chewers	Lepidoptera	Crambidae	<i>Herpetogramma platycapna</i> (Meyrick)	4	*
Larval leaf-chewers	Lepidoptera	Crambidae	<i>Herpetogramma bipunctalis</i> complex	11	*
Larval leaf-chewers	Lepidoptera	Crambidae	<i>Isocentris</i> sp. [CRAM036]	4	
Larval leaf-chewers	Lepidoptera	Crambidae	<i>Isocentris</i> sp. nr. <i>aequalis</i> (Lederer)	170	
Larval leaf-chewers	Lepidoptera	Crambidae	<i>Meekiaria</i> nr. but not <i>lignea</i> Munroe	2	
Larval leaf-chewers	Lepidoptera	Crambidae	<i>Meekiaria purpurea</i> Hampson	125	
Larval leaf-chewers	Lepidoptera	Crambidae	<i>Meekiaria</i> sp. [PYRA006]	771	
Larval leaf-chewers	Lepidoptera	Crambidae	<i>Meekiaria</i> sp. [CRAM041]	493	
Larval leaf-chewers	Lepidoptera	Crambidae	<i>Meekiaria</i> sp. [CRAM044]	165	
Larval leaf-chewers	Lepidoptera	Crambidae	<i>Meroctena staintonii</i> Lededer	2	
Larval leaf-chewers	Lepidoptera	Crambidae	<i>Musotima</i> sp. [CRAM027]	9	
Larval leaf-chewers	Lepidoptera	Crambidae	<i>Musotima vagilinealis</i> (Hampson)	9	
Larval leaf-chewers	Lepidoptera	Crambidae	<i>Nacoleia octasema</i> (Meyrick)	100	
Larval leaf-chewers	Lepidoptera	Crambidae	<i>Notarcha</i> sp. nr. <i>quaternalis</i> (Zeller)	4	
Larval leaf-chewers	Lepidoptera	Crambidae	<i>Orthospila</i> sp. nr. <i>orissusalis</i> (Walker) [CRAM013]	126	*
Larval leaf-chewers	Lepidoptera	Crambidae	<i>Orthospila</i> sp. nr. <i>orissusalis</i> (Walker) [CRAM051]	24	
Larval leaf-chewers	Lepidoptera	Crambidae	<i>Orthospila</i> sp. nr. <i>orissusalis</i> (Walker) [CRAM021]	69	
Larval leaf-chewers	Lepidoptera	Crambidae	<i>Pagya salvalis</i> Walker	53	*
Larval leaf-chewers	Lepidoptera	Crambidae	<i>Pagya</i> sp. nr. <i>ochrealis</i> Whalley [2 species]	39	
Larval leaf-chewers	Lepidoptera	Crambidae	<i>Paliga</i> sp. nr. <i>quadrigalis</i> (Hering)	114	
Larval leaf-chewers	Lepidoptera	Crambidae	<i>Paradomina</i> sp. [CRAM039]	164	
Larval leaf-chewers	Lepidoptera	Crambidae	<i>Parotis marginata</i> group [CRAM055]	341	*
Larval leaf-chewers	Lepidoptera	Crambidae	<i>Parotis marginata</i> group [GEOM001]	97	*
Larval leaf-chewers	Lepidoptera	Crambidae	<i>Parotis suralis</i> (Lederer)	129	
Larval leaf-chewers	Lepidoptera	Crambidae	<i>Parotis tricoloralis</i> (Pagenstecher)	24	
Larval leaf-chewers	Lepidoptera	Crambidae	<i>Phostria margarita</i> (Butler)	168	
Larval leaf-chewers	Lepidoptera	Crambidae	<i>Pleuroptya sabinusalis</i> (Walker)	65	
Larval leaf-chewers	Lepidoptera	Crambidae	<i>Pleuroptya sellalis</i> (Guenee)	4	
Larval leaf-chewers	Lepidoptera	Crambidae	<i>Pleuroptya balteata</i> complex	2	
Larval leaf-chewers	Lepidoptera	Crambidae	<i>Prophantis adusta</i> Inoue	37	
Larval leaf-chewers	Lepidoptera	Crambidae	<i>Prorodes mimica</i> Swinhoe	5	
Larval leaf-chewers	Lepidoptera	Crambidae	<i>Protonoceres eucosma</i> (Turner)	154	
Larval leaf-chewers	Lepidoptera	Crambidae	<i>Pycnarmon argenticincta</i> Hampson	237	*
Larval leaf-chewers	Lepidoptera	Crambidae	<i>Pycnarmon glaucias</i> (Meyrick)	12	*
Larval leaf-chewers	Lepidoptera	Crambidae	<i>Pycnarmon jaguaralis papualis</i> Munroe	123	*
Larval leaf-chewers	Lepidoptera	Crambidae	<i>Pycnarmon praeruptalis</i> (Lederer)	202	
Larval leaf-chewers	Lepidoptera	Crambidae	<i>Pycnarmon</i> sp. nr. <i>dryocentra</i> Meyrick	8	*
Larval leaf-chewers	Lepidoptera	Crambidae	<i>Sylepta</i> sp. nr. <i>crotonalis</i> Walker [CRAM078]	258	
Larval leaf-chewers	Lepidoptera	Crambidae	<i>Sylepta</i> sp. nr. <i>crotonalis</i> Walker [CRAM092]	26	
Larval leaf-chewers	Lepidoptera	Crambidae	<i>Syllepte melangnatha</i> (Hampson)	15	
Larval leaf-chewers	Lepidoptera	Crambidae	<i>Syllepte planeflava</i> Hampson	8	
Larval leaf-chewers	Lepidoptera	Crambidae	<i>Syntomodera</i> sp. nr. <i>thoasalis</i> (Walker)	2	
Larval leaf-chewers	Lepidoptera	Crambidae	<i>Tabidia insanalis</i> Snellen	2	
Larval leaf-chewers	Lepidoptera	Crambidae	<i>Talanga deliciosa</i> (Butler)	185	*
Larval leaf-chewers	Lepidoptera	Crambidae	<i>Talanga excelsalis moresbyensis</i> (Strand)	169	*
Larval leaf-chewers	Lepidoptera	Crambidae	<i>Talanga polyzonalis</i> (Hampson)	36	*
Larval leaf-chewers	Lepidoptera	Crambidae	<i>Talanga</i> sp. nr. <i>sexpunctalis</i> (Moore)	79	*
Larval leaf-chewers	Lepidoptera	Drepanidae	<i>Oreta pingorum</i> Holloway	6	
Larval leaf-chewers	Lepidoptera	Elachistidae	Gen. nr. <i>Peritomenta</i> sp. [XXXX093]	19	*
Larval leaf-chewers	Lepidoptera	Elachistidae	Gen. nr. <i>Peritomenta</i> sp. [XXXX094]	40	*
Larval leaf-chewers	Lepidoptera	Elachistidae	Indet. [TORT167]	4	
Larval leaf-chewers	Lepidoptera	Elachistidae	Indet. [XXXX109]	144	
Larval leaf-chewers	Lepidoptera	Elachistidae	Indet. [XXXX117]	21	
Larval leaf-chewers	Lepidoptera	Elachistidae	<i>Peritormenta</i> sp. [XXXX097]	4	*
Larval leaf-chewers	Lepidoptera	Gelechiidae	<i>Anarsia</i> sp. nov. [XXXX116]	7	
Larval leaf-chewers	Lepidoptera	Gelechiidae	<i>Dichomeris ochreovirella</i> (Pagenstecher)[2 species]	273	*
Larval leaf-chewers	Lepidoptera	Gelechiidae	<i>Dichomeris</i> sp. [XXXX068]	262	*
Larval leaf-chewers	Lepidoptera	Gelechiidae	<i>Dichomeris</i> sp. [XXXX076]	218	*
Larval leaf-chewers	Lepidoptera	Gelechiidae	<i>Dichomeris</i> sp. [XXXX095]	238	

Table S3 continued

Guild	Order	Family	Species	N
Larval leaf-chewers	Lepidoptera	Gelechiidae	Gen. nr. <i>Dichomeris</i> sp. [XXXX079]	4
Larval leaf-chewers	Lepidoptera	Gelechiidae	<i>Idiophantis</i> sp. nov. [TORT163]	11
Larval leaf-chewers	Lepidoptera	Gelechiidae	Indet. [TORT055]	6
Larval leaf-chewers	Lepidoptera	Geometridae	<i>Agathia kuehni</i> Warren	3
Larval leaf-chewers	Lepidoptera	Geometridae	<i>Agathia</i> sp. [GEOM075]	4
Larval leaf-chewers	Lepidoptera	Geometridae	<i>Agathiopsis maculata</i> Warren	4
Larval leaf-chewers	Lepidoptera	Geometridae	<i>Albinospila syntyche</i> (Prout)[3 cryptic species]	81 *
Larval leaf-chewers	Lepidoptera	Geometridae	<i>Aplochloa subflava</i> Warren	2
Larval leaf-chewers	Lepidoptera	Geometridae	<i>Aplochloa vivalaca</i> Walker	3
Larval leaf-chewers	Lepidoptera	Geometridae	<i>Berta</i> sp. [XXXX090]	49 *
Larval leaf-chewers	Lepidoptera	Geometridae	<i>Bosara</i> sp. nov. [XXXX067]	160
Larval leaf-chewers	Lepidoptera	Geometridae	<i>Bracca rosenbergi</i> (Pagenstecher)	45
Larval leaf-chewers	Lepidoptera	Geometridae	<i>Callhistia grandis</i> Druce	11
Larval leaf-chewers	Lepidoptera	Geometridae	<i>Capasa recenstata</i> (Prout)	150
Larval leaf-chewers	Lepidoptera	Geometridae	<i>Chrysochloroma electrica</i> or <i>saturata</i> Warren	2 *
Larval leaf-chewers	Lepidoptera	Geometridae	<i>Chrysocraspeda inundata</i> Warren	4
Larval leaf-chewers	Lepidoptera	Geometridae	<i>Chrysocraspeda</i> sp. nov. nr. <i>fasciata</i> Warren	100
Larval leaf-chewers	Lepidoptera	Geometridae	<i>Chrysocraspeda</i> sp. nr. <i>inundata</i> Warren	391 *
Larval leaf-chewers	Lepidoptera	Geometridae	<i>Cleora repetita</i> Butler	13 *
Larval leaf-chewers	Lepidoptera	Geometridae	<i>Craspedosis ovalis</i> Warren	47
Larval leaf-chewers	Lepidoptera	Geometridae	<i>Derambila stigmaticosa</i> Warren	43 *
Larval leaf-chewers	Lepidoptera	Geometridae	<i>Ectropis bhurmitra</i> (Walker) 1860	19
Larval leaf-chewers	Lepidoptera	Geometridae	<i>Eois</i> sp. [GEOM018]	23
Larval leaf-chewers	Lepidoptera	Geometridae	<i>Eucyclodes albilauta</i> (Warren)	8
Larval leaf-chewers	Lepidoptera	Geometridae	<i>Eucyclodes</i> sp. nr. <i>griseonotata</i> Warren	19 *
Larval leaf-chewers	Lepidoptera	Geometridae	<i>Gymnoscelis lavella</i> Prout	5
Larval leaf-chewers	Lepidoptera	Geometridae	<i>Gymnoscelis</i> sp. nr. <i>polyclealis</i> Walker	253
Larval leaf-chewers	Lepidoptera	Geometridae	<i>Hypomecis infaustaria</i> Walker	7 *
Larval leaf-chewers	Lepidoptera	Geometridae	<i>Hyposidra incomptaria</i> Walker	5 *
Larval leaf-chewers	Lepidoptera	Geometridae	<i>Hyposidra</i> sp. [GEOM008]	2
Larval leaf-chewers	Lepidoptera	Geometridae	<i>Hyposidra incomptaria</i> (Walker)	6 *
Larval leaf-chewers	Lepidoptera	Geometridae	<i>Hyposidra talaca</i> Walker	32 *
Larval leaf-chewers	Lepidoptera	Geometridae	Indet. [GEOM145]	12
Larval leaf-chewers	Lepidoptera	Geometridae	<i>Jodis</i> (s.l.) <i>albifusa</i> complex [3 species]	128 *
Larval leaf-chewers	Lepidoptera	Geometridae	<i>Oenospila</i> sp. nr. <i>flavilinea</i> Warren	95 *
Larval leaf-chewers	Lepidoptera	Geometridae	<i>Oenospila</i> sp. nr. <i>rufinotata</i> Warren	139
Larval leaf-chewers	Lepidoptera	Geometridae	<i>Oenospila stellata</i> Warren	143
Larval leaf-chewers	Lepidoptera	Geometridae	<i>Ozola indefensa</i> Warren	104
Larval leaf-chewers	Lepidoptera	Geometridae	<i>Paradromula xylinopa</i> Meyrick	5
Larval leaf-chewers	Lepidoptera	Geometridae	<i>Paradromulia</i> sp. nr. but not <i>lignifascia</i> Warren	241
Larval leaf-chewers	Lepidoptera	Geometridae	<i>Peridelias</i> sp. nr. <i>aprosita</i> Turner	5
Larval leaf-chewers	Lepidoptera	Geometridae	<i>Perixera ampligutta</i> Warren	6 *
Larval leaf-chewers	Lepidoptera	Geometridae	<i>Perixera ceramis</i> (Meyrick)	6
Larval leaf-chewers	Lepidoptera	Geometridae	<i>Pingasa chloa</i> Stoll	21
Larval leaf-chewers	Lepidoptera	Geometridae	<i>Prasinocyma nivisparsa</i> (Buttler)	6
Larval leaf-chewers	Lepidoptera	Geometridae	<i>Scopula amala</i> Meyrick	2
Larval leaf-chewers	Lepidoptera	Geometridae	<i>Scopula parvamacula</i> (Warren)	15
Larval leaf-chewers	Lepidoptera	Geometridae	<i>Symmactra solidaria ochrea</i> Warren	13
Larval leaf-chewers	Lepidoptera	Geometridae	<i>Thalassodes</i> sp. nr. but not <i>sundissepta</i> Holloway	2 *
Larval leaf-chewers	Lepidoptera	Geometridae	<i>Zeugma recusataria</i> Walker	190 *
Larval leaf-chewers	Lepidoptera	Gracillariidae	Indet. [XXXX100]	8
Larval leaf-chewers	Lepidoptera	Gracillariidae	Indet. [XXXX111]	9
Larval leaf-chewers	Lepidoptera	Gracillariidae	Indet. [XXXX115]	5
Larval leaf-chewers	Lepidoptera	Hesperiidae	<i>Arrhenes</i> sp. nr. <i>marnas</i> (Waterhouse & Lyell)	89
Larval leaf-chewers	Lepidoptera	Hesperiidae	<i>Notocrypta renardi</i> Oberthur	14
Larval leaf-chewers	Lepidoptera	Hyblaeidae	<i>Hyblaea amboinae</i> Felder	6
Larval leaf-chewers	Lepidoptera	Hyblaeidae	<i>Hyblaea constellata</i> Guenee	8
Larval leaf-chewers	Lepidoptera	Hyblaeidae	<i>Hyblaea puera</i> complex	5
Larval leaf-chewers	Lepidoptera	Immidae	<i>Imma niphopelta</i> Meyrick	30
Larval leaf-chewers	Lepidoptera	Immidae	<i>Imma</i> sp. [TORT122]	142
Larval leaf-chewers	Lepidoptera	Immidae	<i>Moca congrualis</i> (Walsingham)	55 *
Larval leaf-chewers	Lepidoptera	Lecithoceridae	<i>Scythropiodes</i> sp. nov. nr. <i>perissa</i> (Diakonoff)	50 *

Table S3 continued

Guild	Order	Family	Species	N	
Larval leaf-chewers	Lepidoptera	Limacodidae	Indet. [LIMA008]	2	*
Larval leaf-chewers	Lepidoptera	Limacodidae	<i>Scopelodes nitens</i> Bethune-Baker	2	
Larval leaf-chewers	Lepidoptera	Lycaenidae	<i>Arhopala meander</i> (Boisduval)	2	
Larval leaf-chewers	Lepidoptera	Lycaenidae	<i>Deudorix epirus</i> Fruhstorfer	7	
Larval leaf-chewers	Lepidoptera	Lycaenidae	<i>Hypochrysops plotnius</i> Grose-Smith	4	
Larval leaf-chewers	Lepidoptera	Lycaenidae	<i>Philiris helena</i> (Snellen)	11	*
Larval leaf-chewers	Lepidoptera	Lycaenidae	<i>Philiris moira</i> Grose-Smith [LYCA001]	43	
Larval leaf-chewers	Lepidoptera	Lymantriidae	<i>Arctornis intacta</i> complex [4 species]	15	*
Larval leaf-chewers	Lepidoptera	Lymantriidae	<i>Euproctis</i> sp. [LYMA003]	7	*
Larval leaf-chewers	Lepidoptera	Lymantriidae	Indet. [LYMA009]	2	
Larval leaf-chewers	Lepidoptera	Lymantriidae	Indet. [LYMA013]	4	
Larval leaf-chewers	Lepidoptera	Lymantriidae	<i>Nygmia</i> sp. nov. nr. <i>arrogans</i> (Lucas)	2	
Larval leaf-chewers	Lepidoptera	Lymantriidae	<i>Olene</i> sp. nr. <i>mendosa</i> Huebner	20	
Larval leaf-chewers	Lepidoptera	Lymantriidae	<i>Orvasca</i> sp. [LYMA002]	5	*
Larval leaf-chewers	Lepidoptera	Lymantriidae	<i>Somena alba</i> (Bethune-Baker)	28	*
Larval leaf-chewers	Lepidoptera	Lymantriidae	<i>Teia</i> sp. nr. but not <i>dewara</i> (Swinhoe)	13	*
Larval leaf-chewers	Lepidoptera	Noctuidae	<i>Anomis</i> (s. lat.) sp. [NOCT083]	3	
Larval leaf-chewers	Lepidoptera	Noctuidae	<i>Asota carica</i> (Fabricius)	100	
Larval leaf-chewers	Lepidoptera	Noctuidae	<i>Asota heliconia</i> (Linnaeus)	84	
Larval leaf-chewers	Lepidoptera	Noctuidae	<i>Asota plana</i> Walker	35	*
Larval leaf-chewers	Lepidoptera	Noctuidae	<i>Asota eusemiodes</i> (Felder) [= <i>versicolor</i> (Fabricius)]	36	
Larval leaf-chewers	Lepidoptera	Noctuidae	<i>Avatha pulcherrima</i> (Butler)	4	*
Larval leaf-chewers	Lepidoptera	Noctuidae	<i>Bastilla nielsenii</i> Holloway & Miller	45	
Larval leaf-chewers	Lepidoptera	Noctuidae	<i>Bastilla solomonensis</i> Hampson	55	
Larval leaf-chewers	Lepidoptera	Noctuidae	<i>Bastilla binatang</i> Holloway & Miller	400	
Larval leaf-chewers	Lepidoptera	Noctuidae	<i>Chasmina</i> sp. [NOCT080]	3	
Larval leaf-chewers	Lepidoptera	Noctuidae	<i>Chasmina tibiopunctata</i> Bethune-Baker	2	
Larval leaf-chewers	Lepidoptera	Noctuidae	<i>Claterna cydonia</i> Cramer	5	
Larval leaf-chewers	Lepidoptera	Noctuidae	<i>Dichromia</i> sp. nr. but not <i>isogona</i> Meyrick [NOCT046]	182	
Larval leaf-chewers	Lepidoptera	Noctuidae	<i>Dysagnathia nigropunctata</i> (Bethune-Baker)	16	
Larval leaf-chewers	Lepidoptera	Noctuidae	<i>Heterormista fulvitaenia</i> (Warren)	4	
Larval leaf-chewers	Lepidoptera	Noctuidae	Indet. [NOCT085]	8	
Larval leaf-chewers	Lepidoptera	Noctuidae	Indet. [NOTO005]	7	
Larval leaf-chewers	Lepidoptera	Noctuidae	Indet. [THYR011]	7	
Larval leaf-chewers	Lepidoptera	Noctuidae	<i>Mecistoptera franzwagneri</i> Lodi	2	*
Larval leaf-chewers	Lepidoptera	Noctuidae	<i>Mecistoptera</i> n. sp.	8	*
Larval leaf-chewers	Lepidoptera	Noctuidae	<i>Parilyrgis intacta</i> (Hampson)	2	
Larval leaf-chewers	Lepidoptera	Noctuidae	<i>Pinacia novoguineana</i> (Bethune-Baker)	46	
Larval leaf-chewers	Lepidoptera	Noctuidae	<i>Piratisca minax</i> Meyrick	44	
Larval leaf-chewers	Lepidoptera	Noctuidae	<i>Plecoptera violacea</i> Pagenstecher	113	
Larval leaf-chewers	Lepidoptera	Noctuidae	<i>Rusicada nigritarsus xanthochroa</i> (Butler)	56	
Larval leaf-chewers	Lepidoptera	Noctuidae	<i>Savara latimargo</i> Walker	2	
Larval leaf-chewers	Lepidoptera	Noctuidae	<i>Savara pallidapex</i> Holloway	6	
Larval leaf-chewers	Lepidoptera	Noctuidae	<i>Tamba ochreistriga</i> (Bethune-Baker)	2	
Larval leaf-chewers	Lepidoptera	Noctuidae	<i>Tamba plumipes</i> Hampson	2	
Larval leaf-chewers	Lepidoptera	Noctuidae	<i>Targalla palliatrix</i> (Guenee)	8	*
Larval leaf-chewers	Lepidoptera	Noctuidae	<i>Throana</i> sp. [GEOM030]	129	
Larval leaf-chewers	Lepidoptera	Noctuidae	" <i>Tipasa</i> " <i>subrosea</i> Pagenstecher	3	
Larval leaf-chewers	Lepidoptera	Noctuidae	<i>Tiruvaca subcostalis</i> (Walker)	3	
Larval leaf-chewers	Lepidoptera	Nolidae	<i>Barasa cymatistis</i> Meyrick	4	
Larval leaf-chewers	Lepidoptera	Nolidae	<i>Beara falcata</i> Holloway	5	
Larval leaf-chewers	Lepidoptera	Nolidae	<i>Chora huntei</i> Warren	19	*
Larval leaf-chewers	Lepidoptera	Nolidae	<i>Dilophothripa alopha</i> Hampson	2	
Larval leaf-chewers	Lepidoptera	Nolidae	<i>Earias uniplaga</i> Bethune-Baker	16	
Larval leaf-chewers	Lepidoptera	Nolidae	<i>Gadirtha inexacta buruensis</i> Prout	3	
Larval leaf-chewers	Lepidoptera	Nolidae	<i>Giaura leucophaea</i> Hampson	71	
Larval leaf-chewers	Lepidoptera	Nolidae	Indet. [TORT151]	6	
Larval leaf-chewers	Lepidoptera	Nolidae	<i>Lophothripa vitea</i> Swinhoe	4	*
Larval leaf-chewers	Lepidoptera	Nolidae	<i>Nycteola indicatana</i> (Walker)	43	*
Larval leaf-chewers	Lepidoptera	Nolidae	" <i>Roeselia</i> " <i>hemizona</i> Hampson	4	
Larval leaf-chewers	Lepidoptera	Notodontidae	<i>Chadisra striata</i> Rothschild	10	
Larval leaf-chewers	Lepidoptera	Nymphalidae	<i>Cyrestis acilia</i> Godart	58	*

Table S3 continued

Guild	Order	Family	Species	N	
Larval leaf-chewers	Lepidoptera	Nymphalidae	<i>Euploea leucostictos</i> Gmelin	44	*
Larval leaf-chewers	Lepidoptera	Nymphalidae	<i>Mycalesis duponchelii</i> (Guérin-Ménéville)	5	
Larval leaf-chewers	Lepidoptera	Nymphalidae	<i>Neptis satina</i> Grose-Smith	2	
Larval leaf-chewers	Lepidoptera	Nymphalidae	<i>Taenaris</i> sp. nr. <i>myops</i> C. & R. Felder	16	
Larval leaf-chewers	Lepidoptera	Oecophoridae	Gen. nov. sp. nov. [TORT144]	63	*
Larval leaf-chewers	Lepidoptera	Oecophoridae	<i>Lophopepla</i> sp. [TORT202]	5	
Larval leaf-chewers	Lepidoptera	Oecophoridae	<i>Stathmopoda</i> sp. nr. <i>masinissa</i> Meyrick	3	
Larval leaf-chewers	Lepidoptera	Oecophoridae	<i>Stathmopoda?</i> sp. [XXXX118]	2	
Larval leaf-chewers	Lepidoptera	Peleopodidae	<i>Acria sciogramma</i> Meyrick	12	*
Larval leaf-chewers	Lepidoptera	Pieridae	<i>Eurema hecabe</i> (Linnaeus)	20	
Larval leaf-chewers	Lepidoptera	Pterophoridae	<i>Cosmoclostis</i> sp. nov. [PTER002]	18	
Larval leaf-chewers	Lepidoptera	Pyralidae	<i>Macna oppositalis</i> (Walker)	2	
Larval leaf-chewers	Lepidoptera	Pyralidae	<i>Macna</i> sp. [TORT152]	7	
Larval leaf-chewers	Lepidoptera	Pyralidae	<i>Macna</i> sp. nov. nr. <i>atrirufalis</i> Hampson	2	
Larval leaf-chewers	Lepidoptera	Pyralidae	<i>Orthaga melanoperalis</i> Hampson	53	*
Larval leaf-chewers	Lepidoptera	Pyralidae	<i>Orthaga</i> sp. nr. <i>percnodes</i> Turner	2	*
Larval leaf-chewers	Lepidoptera	Pyralidae	<i>Pseudocera</i> sp. nr. <i>trissosticha</i> (Turner)	63	*
Larval leaf-chewers	Lepidoptera	Pyralidae	<i>Pseudocera trissosticha</i> (Turner)	7	*
Larval leaf-chewers	Lepidoptera	Pyralidae	<i>Ptyomaxia</i> sp. [XXXX070]	4	
Larval leaf-chewers	Lepidoptera	Pyralidae	<i>Unadophanes trissomita</i> (Turner)	78	*
Larval leaf-chewers	Lepidoptera	Roeslerstammiidae	<i>Vanicela</i> sp. [PTER003]	4	*
Larval leaf-chewers	Lepidoptera	Sphingidae	<i>Acherontia lachesis</i> (Fabricius)	2	
Larval leaf-chewers	Lepidoptera	Sphingidae	<i>Daphnis hypothous</i> Cramer	11	
Larval leaf-chewers	Lepidoptera	Sphingidae	<i>Hippotion brennus</i> Stoll	3	
Larval leaf-chewers	Lepidoptera	Sphingidae	Indent. [SPHI001]	2	
Larval leaf-chewers	Lepidoptera	Sphingidae	Indent. [SPHI002]	2	
Larval leaf-chewers	Lepidoptera	Sphingidae	<i>Macroglossum corythus pylene</i> (Felder)	66	
Larval leaf-chewers	Lepidoptera	Sphingidae	<i>Macroglossum hirundo errans</i> Walker	58	
Larval leaf-chewers	Lepidoptera	Sphingidae	<i>Macroglossum inspida papuanum</i> Rothschild & Jordan	27	
Larval leaf-chewers	Lepidoptera	Sphingidae	<i>Macroglossum melas pullius</i> Rothschild & Jordan	29	
Larval leaf-chewers	Lepidoptera	Sphingidae	<i>Psilogamma menephron</i> Cramer	4	*
Larval leaf-chewers	Lepidoptera	Thyrididae	<i>Addaea pusilla</i> (Butler)	73	*
Larval leaf-chewers	Lepidoptera	Thyrididae	<i>Addaea</i> sp. nr. <i>probolopsis</i> Meyrick	32	
Larval leaf-chewers	Lepidoptera	Thyrididae	<i>Aglaopus ignefissa</i> (Warren)	23	
Larval leaf-chewers	Lepidoptera	Thyrididae	<i>Aglaopus leprosa</i> (Warren)	4	
Larval leaf-chewers	Lepidoptera	Thyrididae	<i>Aglaopus</i> sp. nr. <i>scintillans</i> (Warren)	6	
Larval leaf-chewers	Lepidoptera	Thyrididae	Indet. [THYR020]	3	*
Larval leaf-chewers	Lepidoptera	Thyrididae	<i>Mellea nitida</i> (Pagenstecher)	12	*
Larval leaf-chewers	Lepidoptera	Thyrididae	<i>Mellea ordinaria</i> complex (Warren)	108	*
Larval leaf-chewers	Lepidoptera	Thyrididae	<i>Mellea ramifera</i> (Warren)	26	*
Larval leaf-chewers	Lepidoptera	Thyrididae	<i>Pharambara splendida</i> (Butler)	69	*
Larval leaf-chewers	Lepidoptera	Thyrididae	<i>Rhodoneura aurata</i> (Butler)	11	
Larval leaf-chewers	Lepidoptera	Thyrididae	<i>Striglina asinina</i> Warren	10	*
Larval leaf-chewers	Lepidoptera	Thyrididae	<i>Striglina cinnamomea</i> (Rothschild)	53	
Larval leaf-chewers	Lepidoptera	Tortricidae	<i>Adoxophyes fasciculana</i> (Walker)	115	*
Larval leaf-chewers	Lepidoptera	Tortricidae	<i>Adoxophyes</i> sp. [TORT044]	143	*
Larval leaf-chewers	Lepidoptera	Tortricidae	<i>Adoxophyes</i> sp. [TORT066]	124	*
Larval leaf-chewers	Lepidoptera	Tortricidae	<i>Adoxophyes</i> sp. [TORT131]	116	*
Larval leaf-chewers	Lepidoptera	Tortricidae	<i>Adoxophyes templana</i> group [2 cryptic species]	81	*
Larval leaf-chewers	Lepidoptera	Tortricidae	<i>Adoxophyes thoracica</i> Diakonoff	124	*
Larval leaf-chewers	Lepidoptera	Tortricidae	<i>Adoxophyes tripselia</i> (Lower) 1908	26	*
Larval leaf-chewers	Lepidoptera	Tortricidae	<i>Ancylophyes</i> sp. [XXXX114]	2	
Larval leaf-chewers	Lepidoptera	Tortricidae	<i>Archigriptis chrysodema</i> (Diakonoff)	2	
Larval leaf-chewers	Lepidoptera	Tortricidae	<i>Dudua</i> sp. nov. nr. <i>aprobola</i> (Meyrick)	360	*
Larval leaf-chewers	Lepidoptera	Tortricidae	<i>Eboda smaragdina</i> Walker	15	*
Larval leaf-chewers	Lepidoptera	Tortricidae	<i>Gatesclarkeana pachnodes</i> (Meyrick)	40	
Larval leaf-chewers	Lepidoptera	Tortricidae	Gen. nov. nr. <i>Loboschiza</i> sp. nov. [TORT172]	14	
Larval leaf-chewers	Lepidoptera	Tortricidae	Gen. nov. sp. nov. [TORT110]	65	
Larval leaf-chewers	Lepidoptera	Tortricidae	Gen. nr. but not <i>Acroclita</i> sp. [TORT063]	4	
Larval leaf-chewers	Lepidoptera	Tortricidae	<i>Heleanna</i> sp. [TORT065]	20	
Larval leaf-chewers	Lepidoptera	Tortricidae	<i>Homona aestivana</i> (Walker)	7	
Larval leaf-chewers	Lepidoptera	Tortricidae	<i>Homona mermerodes</i> Meyrick	485	*

Table S3 continued

Guild	Order	Family	Species	N
Larval leaf-chewers	Lepidoptera	Tortricidae	<i>Homona auriga</i> (Durrant)	8
Larval leaf-chewers	Lepidoptera	Tortricidae	<i>Homona trachyptera</i> Diakonoff	25
Larval leaf-chewers	Lepidoptera	Tortricidae	Indet. [TORT197]	2
Larval leaf-chewers	Lepidoptera	Tortricidae	<i>Ophiorrhabda deceptor</i> Diakonoff	251 *
Larval leaf-chewers	Lepidoptera	Tortricidae	<i>Pareboda prosecta</i> Razowski	2 *
Larval leaf-chewers	Lepidoptera	Tortricidae	<i>Sorolopha cyclotoma</i> Lower	12
Larval leaf-chewers	Lepidoptera	Tortricidae	<i>Sorolopha</i> sp. [TORT117]	85
Larval leaf-chewers	Lepidoptera	Tortricidae	<i>Sorolopha</i> sp. [TORT147]	7
Larval leaf-chewers	Lepidoptera	Tortricidae	<i>Sorolopha</i> sp. nr. <i>caryochlora</i> Diakonoff	149
Larval leaf-chewers	Lepidoptera	Tortricidae	<i>Sorolopha</i> sp. nr. <i>elaeodes</i> Lower	3
Larval leaf-chewers	Lepidoptera	Tortricidae	<i>Statherotis discana</i> (Felder & Rogenhofer)	9 *
Larval leaf-chewers	Lepidoptera	Tortricidae	<i>Xenothictis gnetivora</i> Brown, Miller & Horak	121 *
Larval leaf-chewers	Lepidoptera	Uraniidae	<i>Chundara assimilis</i> (Warren)	6
Larval leaf-chewers	Lepidoptera	Uraniidae	<i>Dysaethria angulata</i> (Warren 1896)	24
Larval leaf-chewers	Lepidoptera	Uraniidae	<i>Dysaethria particolor</i> (Warren)	102
Larval leaf-chewers	Lepidoptera	Uraniidae	<i>Dysaethria quadricaudata</i> (Walker)	260
Larval leaf-chewers	Lepidoptera	Uraniidae	<i>Dysaethria</i> sp. [GEOM045]	40
Larval leaf-chewers	Lepidoptera	Uraniidae	<i>Dysaethria</i> sp. [GEOM047]	4
Larval leaf-chewers	Lepidoptera	Uraniidae	<i>Dysaethria</i> sp. nov. [<i>conflictaria</i> group]	5
Larval leaf-chewers	Lepidoptera	Uraniidae	<i>Europlema niveosaria</i> (Walker)	94
Larval leaf-chewers	Lepidoptera	Uraniidae	<i>Europlema semibrunnea</i> (Pagenstecher)	184
Larval leaf-chewers	Lepidoptera	Uraniidae	<i>Lyssa macleayi</i> (Montrouzier)	11
Larval leaf-chewers	Lepidoptera	Uraniidae	<i>Monobolodes fuscibrunnea</i> Warren	5
Larval leaf-chewers	Lepidoptera	Uraniidae	<i>Monobolodes</i> sp. [GEOM037]	4
Larval leaf-chewers	Lepidoptera	Uraniidae	<i>Platerosia rotundipennis</i> Warren	70
Larval leaf-chewers	Lepidoptera	Uraniidae	<i>Platerosia</i> sp. nr. <i>rotundipennis</i> Warren [GEOM033]	80
Larval leaf-chewers	Lepidoptera	Uraniidae	<i>Urapteroides astheniata</i> Guenee	5
Larval leaf-chewers	Lepidoptera	Uraniidae	<i>Cyphura swinhoei</i> Joicey & Talbot	2
Larval leaf-chewers	Lepidoptera	?	Indet. [XXXX130]	13
Larval leaf-chewers	Lepidoptera	?	Indet. [XXXX131]	10
Larval leaf-chewers	Lepidoptera	?	Indet. [XXXX132]	21 *
Larval leaf-chewers	Lepidoptera	?	Indet. [XXXX133]	14
Larval leaf-chewers	Lepidoptera	?	Indet. [XXXX150]	5
Larval leaf-chewers	Lepidoptera	Zygaenidae	<i>Homophylotis</i> sp. nr. <i>aenea</i> Jordan	28
Leaf-miners	Diptera	Agromyzidae	Indet. [MINE049]	5
Leaf-miners	Diptera	Agromyzidae	Indet. [MINE111]	25
Leaf-miners	Diptera	Agromyzidae	Indet. [MINE112]	41
Leaf-miners	Diptera	Agromyzidae	Indet. [MINE117]	38
Leaf-miners	Diptera	Agromyzidae	Indet. [MINE119]	7
Leaf-miners	Diptera	Agromyzidae	Indet. [MINE120]	11 *
Leaf-miners	Coleoptera	Buprestidae	<i>Anthaxomorphus papuanus</i> Deyrolle	213 *
Leaf-miners	Coleoptera	Buprestidae	<i>Aphanisticus</i> sp. [MINE083]	36
Leaf-miners	Coleoptera	Buprestidae	<i>Habroloma</i> sp. [MINE009a]	35
Leaf-miners	Coleoptera	Buprestidae	<i>Habroloma</i> sp. [MINE009b]	14
Leaf-miners	Coleoptera	Buprestidae	<i>Habroloma</i> sp. [MINE009c]	2
Leaf-miners	Coleoptera	Buprestidae	<i>Habroloma</i> sp. [MINE009d]	8 *
Leaf-miners	Coleoptera	Buprestidae	<i>Habroloma</i> sp. [MINE009e]	7 *
Leaf-miners	Coleoptera	Buprestidae	<i>Habroloma</i> sp. [MINE009f]	6
Leaf-miners	Coleoptera	Buprestidae	<i>Habroloma</i> sp. [MINE165]	177 *
Leaf-miners	Coleoptera	Buprestidae	<i>Habroloma</i> sp. [MINE166]	496 *
Leaf-miners	Coleoptera	Buprestidae	<i>Habroloma</i> sp. [MINE167]	58 *
Leaf-miners	Coleoptera	Buprestidae	<i>Habroloma</i> sp. [MINE169]	8 *
Leaf-miners	Coleoptera	Buprestidae	<i>Habroloma</i> sp. [MINE170]	3 *
Leaf-miners	Coleoptera	Buprestidae	Indet. [MINE168]	2
Leaf-miners	Coleoptera	Chrysomelidae	<i>Dactylispa rubus</i> (Gestro)	164
Leaf-miners	Coleoptera	Chrysomelidae	Indet. [MINE080]	28
Leaf-miners	Coleoptera	Chrysomelidae	Indet. [MINE082]	6
Leaf-miners	Coleoptera	Chrysomelidae	<i>Micrispa pellucida</i> (Gressitt)	10
Leaf-miners	Coleoptera	Curculionidae	Indet. [MINE046]	2
Leaf-miners	Coleoptera	Curculionidae	Indet. [MINE068]	2
Leaf-miners	Coleoptera	Curculionidae	Indet. [MINE069]	15
Leaf-miners	Coleoptera	Curculionidae	Indet. [MINE099]	30

Table S3 continued

Guild	Order	Family	Species	N
Leaf-miners	Lepidoptera	Gelechiidae	Indet. [MINE065]	2
Leaf-miners	Lepidoptera	Gracillariidae	<i>Acrocercops</i> sp. [MINE018]	57
Leaf-miners	Lepidoptera	Gracillariidae	<i>Acrocercops</i> sp. [MINE030]	103 *
Leaf-miners	Lepidoptera	Gracillariidae	<i>Acrocercops</i> sp. [MINE030a]	44
Leaf-miners	Lepidoptera	Gracillariidae	<i>Borboryctis</i> sp. [MINE008]	1495
Leaf-miners	Lepidoptera	Gracillariidae	<i>Conopomorphina</i> ? sp. [MINE013]	51 *
Leaf-miners	Lepidoptera	Gracillariidae	<i>Deoptilia</i> sp. [MINE010]	75
Leaf-miners	Lepidoptera	Gracillariidae	<i>Deoptilia</i> sp. [MINE017]	3
Leaf-miners	Lepidoptera	Gracillariidae	<i>Deoptilia</i> sp. [MINE027]	2
Leaf-miners	Lepidoptera	Gracillariidae	<i>Diphtheroptila</i> sp. [MINE011]	71 *
Leaf-miners	Lepidoptera	Gracillariidae	Gen. nr. <i>Dekeidoryctis</i> sp. [MINE019]	185
Leaf-miners	Lepidoptera	Gracillariidae	Indet. [MINE000a]	11
Leaf-miners	Lepidoptera	Gracillariidae	Indet. [MINE036]	11
Leaf-miners	Lepidoptera	Gracillariidae	Indet. [MINE038]	69 *
Leaf-miners	Lepidoptera	Gracillariidae	Indet. [MINE039]	107
Leaf-miners	Lepidoptera	Gracillariidae	Indet. [MINE040a]	43
Leaf-miners	Lepidoptera	Gracillariidae	Indet. [MINE040b]	6
Leaf-miners	Lepidoptera	Gracillariidae	Indet. [MINE044]	2
Leaf-miners	Lepidoptera	Gracillariidae	Indet. [MINE047]	3
Leaf-miners	Lepidoptera	Gracillariidae	Indet. [MINE048]	2
Leaf-miners	Lepidoptera	Gracillariidae	Indet. [MINE053]	19 *
Leaf-miners	Lepidoptera	Gracillariidae	Indet. [MINE055]	3
Leaf-miners	Lepidoptera	Gracillariidae	Indet. [MINE057]	2 *
Leaf-miners	Lepidoptera	Gracillariidae	<i>Melanocercops</i> sp. [MINE005]	139
Leaf-miners	Lepidoptera	Gracillariidae	<i>Melanocercops</i> sp. [MINE006a]	138
Leaf-miners	Lepidoptera	Gracillariidae	<i>Melanocercops</i> sp. [MINE006b]	28
Leaf-miners	Lepidoptera	Gracillariidae	<i>Melanocercops</i> sp. [MINE006c]	21
Leaf-miners	Lepidoptera	Gracillariidae	<i>Melanocercops</i> sp. [MINE034]	16 *
Leaf-miners	Lepidoptera	Gracillariidae	<i>Phyllocnistis</i> sp. [MINE035a]	86
Leaf-miners	Lepidoptera	Gracillariidae	<i>Phyllocnistis</i> sp. [MINE035b]	125
Leaf-miners	Lepidoptera	Gracillariidae	<i>Phyllocnistis</i> sp. [MINE035c]	121
Leaf-miners	Lepidoptera	Gracillariidae	<i>Phyllocnistis</i> sp. [MINE035d]	52
Leaf-miners	Lepidoptera	Gracillariidae	<i>Phyllocnistis</i> sp. [MINE035e]	10
Leaf-miners	Lepidoptera	Gracillariidae	<i>Phyllonorycter</i> sp. [MINE012]	5
Leaf-miners	Lepidoptera	Gracillariidae	<i>Polydema</i> sp. [MINE007]	54
Leaf-miners	Lepidoptera	Gracillariidae	<i>Polydema</i> sp. [MINE007a]	11
Leaf-miners	Lepidoptera	Gracillariidae	<i>Psydrocercops</i> sp. [MINE003]	54
Leaf-miners	Lepidoptera	Gracillariidae	<i>Psydrocercops</i> sp. [MINE026]	32
Leaf-miners	Lepidoptera	Gracillariidae	<i>Psydrocercops</i> sp. [MINE026a]	5
Leaf-miners	Lepidoptera	Gracillariidae	<i>Spulerina</i> sp. [MINE001]	994
Leaf-miners	Lepidoptera	Gracillariidae	<i>Spulerina</i> sp. [MINE014]	347 *
Leaf-miners	Lepidoptera	Gracillariidae	<i>Stomphastis</i> sp. [MINE015]	138
Leaf-miners	Lepidoptera	Gracillariidae	<i>Stomphastis</i> sp. [MINE015a]	20
Leaf-miners	Lepidoptera	Gracillariidae	<i>Telamoptilia</i> ? sp. [MINE029]	43 *
Leaf-miners	Lepidoptera	Gracillariidae	<i>Phyllocnistis</i> ? sp. [MINE024]	2
Leaf-miners	Lepidoptera	Lyonetiidae	Indet. [MINE066]	137
Leaf-miners	Lepidoptera	Lyonetiidae	Indet. [MINE066a]	81
Leaf-miners	Lepidoptera	Lyonetiidae	Indet. [MINE066b]	46
Leaf-miners	Lepidoptera	Nepticulidae	<i>Stigmella</i> ? sp. [MINE025]	6
Leaf-miners	Lepidoptera	Nepticulidae	<i>Stigmella</i> ? sp. [MINE025a]	42
Leaf-miners	Lepidoptera	Nepticulidae	<i>Stigmella</i> ? sp. [MINE025b]	5
Leaf-miners	Lepidoptera	Tortricidae	Gen. nr. <i>Pseudancylis</i> sp. nov. [MINE031]	113
Leaf-miners	Lepidoptera		Indet. [MINE000c]	3
Leaf-miners	Lepidoptera		Indet. [MINE002]	16
Leaf-miners	Lepidoptera		Indet. [MINE004]	2
Leaf-miners	Lepidoptera		Indet. [MINE028]	2
Leaf-miners	Lepidoptera		Indet. [MINE033]	2
Leaf-miners	Lepidoptera		Indet. [MINE076]	3 *
Leaf-miners	Lepidoptera		Indet. [MINE084]	493
Leaf-miners	Lepidoptera		Indet. [MINE084a]	28
Leaf-miners	Lepidoptera		Indet. [MINE084b]	14
Leaf-miners	Lepidoptera		Indet. [MINE086]	555

Table S3 continued

Guild	Order	Family	Species	N
Leaf-miners	Lepidoptera		Indet. [MINE087]	196
Leaf-miners	Lepidoptera		Indet. [MINE088]	252
Leaf-miners	Lepidoptera		Indet. [MINE089]	216 *
Leaf-miners	Lepidoptera		Indet. [MINE090]	67 *
Leaf-miners	Lepidoptera		Indet. [MINE091]	70
Leaf-miners	Lepidoptera		Indet. [MINE092]	144
Leaf-miners	Lepidoptera		Indet. [MINE093]	100
Leaf-miners	Lepidoptera		Indet. [MINE094]	89
Leaf-miners	Lepidoptera		Indet. [MINE095]	36
Leaf-miners	Lepidoptera		Indet. [MINE096]	14
Leaf-miners	Lepidoptera		Indet. [MINE097]	14
Leaf-miners	Lepidoptera		Indet. [MINE098]	32 *
Leaf-miners	Lepidoptera		Indet. [MINE100]	2
Leaf-miners	Lepidoptera		Indet. [MINE101]	2
Leaf-miners	Lepidoptera		Indet. [MINE102]	108
Leaf-miners	Lepidoptera		Neolithocolletis pentadesma (Meyrick)	80
Leaf-miners	Lepidoptera		Indet. [MINE104]	118
Leaf-miners	Lepidoptera		Indet. [MINE105]	2
Leaf-miners	Lepidoptera		Indet. [MINE107]	18
Leaf-miners	Lepidoptera		Indet. [MINE108]	3
Leaf-miners	Lepidoptera		Indet. [MINE109]	96 *
Leaf-miners	Lepidoptera		Indet. [MINE113]	34
Leaf-miners	Lepidoptera		Indet. [MINE114]	73
Leaf-miners	Lepidoptera		Indet. [MINE115]	25
Leaf-miners	Lepidoptera		Indet. [MINE123]	2
Leaf-miners	Lepidoptera		Indet. [MINE126]	2
Leaf-miners	Lepidoptera		Indet. [MINE132]	2
Leaf-miners	Lepidoptera		Indet. [MINE133]	12
Leaf-miners	Lepidoptera		Indet. [MINE137]	4
Leaf-miners	Lepidoptera		Indet. [MINE141]	2
Leaf-miners	Lepidoptera		Indet. [MINE145]	2
Leaf-miners	Lepidoptera		Indet. [MINE158]	105
Leaf-miners	Lepidoptera		Indet. [MINE160]	8
Leaf-miners	Lepidoptera		Indet. [MINE164]	6
Leaf-suckers	Hemiptera	Cicadellidae	Indet. Typhlocybininae sp. 001	15 *
Leaf-suckers	Hemiptera	Cicadellidae	Indet. Typhlocybininae sp. 002	6 *
Leaf-suckers	Hemiptera	Cicadellidae	Indet. Typhlocybininae sp. 003	10
Leaf-suckers	Hemiptera	Cicadellidae	Indet. Typhlocybininae sp. 003	6
Leaf-suckers	Hemiptera	Cicadellidae	Indet. Typhlocybininae sp. 004	23
Leaf-suckers	Hemiptera	Cicadellidae	Indet. Typhlocybininae sp. 005	10 *
Leaf-suckers	Hemiptera	Cicadellidae	Indet. Typhlocybininae sp. 006	3 *
Leaf-suckers	Hemiptera	Cicadellidae	Indet. Typhlocybininae sp. 007	18
Leaf-suckers	Hemiptera	Cicadellidae	Indet. Typhlocybininae sp. 008	10
Leaf-suckers	Hemiptera	Cicadellidae	Indet. Typhlocybininae sp. 009	38
Leaf-suckers	Hemiptera	Cicadellidae	Indet. Typhlocybininae sp. 010	79
Leaf-suckers	Hemiptera	Cicadellidae	Indet. Typhlocybininae sp. 011	8
Leaf-suckers	Hemiptera	Cicadellidae	Indet. Typhlocybininae sp. 012	26
Leaf-suckers	Hemiptera	Cicadellidae	Indet. Typhlocybininae sp. 014	4
Leaf-suckers	Hemiptera	Cicadellidae	Indet. Typhlocybininae sp. 015	8 *
Leaf-suckers	Hemiptera	Cicadellidae	Indet. Typhlocybininae sp. 016	12 *
Leaf-suckers	Hemiptera	Cicadellidae	Indet. Typhlocybininae sp. 017	31
Leaf-suckers	Hemiptera	Cicadellidae	Indet. Typhlocybininae sp. 018	9
Leaf-suckers	Hemiptera	Cicadellidae	Indet. Typhlocybininae sp. 019	5
Leaf-suckers	Hemiptera	Cicadellidae	Indet. Typhlocybininae sp. 021	4
Leaf-suckers	Hemiptera	Cicadellidae	Indet. Typhlocybininae sp. 022	11
Leaf-suckers	Hemiptera	Cicadellidae	Indet. Typhlocybininae sp. 023	2
Leaf-suckers	Hemiptera	Cicadellidae	Indet. Typhlocybininae sp. 024	3
Leaf-suckers	Hemiptera	Cicadellidae	Indet. Typhlocybininae sp. 025	10
Leaf-suckers	Hemiptera	Cicadellidae	Indet. Typhlocybininae sp. 026	8
Leaf-suckers	Hemiptera	Cicadellidae	Indet. Typhlocybininae sp. 027	11
Leaf-suckers	Hemiptera	Cicadellidae	Indet. Typhlocybininae sp. 028	5
Leaf-suckers	Hemiptera	Cicadellidae	Indet. Typhlocybininae sp. 029	8

Table S3 continued

Guild	Order	Family	Species	N	
Leaf-suckers	Hemiptera	Cicadellidae	Indet. Typhlocybinae sp. 032	5	*
Leaf-suckers	Hemiptera	Cicadellidae	Indet. Typhlocybinae sp. 036	13	
Leaf-suckers	Hemiptera	Cicadellidae	Indet. Typhlocybinae sp. 038	23	
Leaf-suckers	Hemiptera	Cicadellidae	Indet. Typhlocybinae sp. 041	3	
Leaf-suckers	Hemiptera	Cicadellidae	Indet. Typhlocybinae sp. 042	2	
Leaf-suckers	Hemiptera	Cicadellidae	Indet. Typhlocybinae sp. 043	2	
Leaf-suckers	Hemiptera	Cicadellidae	Indet. Typhlocybinae sp. 044	2	
Leaf-suckers	Hemiptera	Cicadellidae	Indet. Typhlocybinae sp. 045	2	
Phloem-feeders	Coleoptera	Curculionidae	<i>Coccotrypes cyperi</i> (Beeson)	25	*
Phloem-feeders	Coleoptera	Curculionidae	<i>Coccotrypes longior</i> (Eggers)	20	*
Phloem-feeders	Coleoptera	Curculionidae	<i>Cyrtogenius brevior</i> (Eggers)	155	*
Phloem-feeders	Coleoptera	Curculionidae	<i>Diaperus curvifer</i> (Walker)	87	*
Phloem-feeders	Coleoptera	Curculionidae	<i>Ficicis despectus</i> (Walker)	8977	*
Phloem-feeders	Coleoptera	Curculionidae	<i>Ficicis wallacei</i> (Blandford)	376	*
Phloem-feeders	Coleoptera	Curculionidae	<i>Hyledius cribratus</i> (Blandford)	7287	
Phloem-feeders	Coleoptera	Curculionidae	<i>Hyledius nitidicollis</i> (Motschulsky)	785	
Phloem-feeders	Coleoptera	Curculionidae	<i>Scolytomimus philippinensis</i> (Eggers)	2916	*
Phloem-feeders	Coleoptera	Curculionidae	<i>Scolytomimus pusillus</i> (Eggers)	776	*
Phloem-suckers	Hemiptera	Cicadellidae	Indet. [CICA027]	2	
Phloem-suckers	Hemiptera	Cicadellidae	Indet. [CICA102]	5	*
Phloem-suckers	Hemiptera	Cicadellidae	<i>Kutara lucidicosta</i> (Walker)	18	*
Phloem-suckers	Hemiptera	Cicadellidae	<i>Sarpestus</i> n. sp. [CICA038]	5	*
Phloem-suckers	Hemiptera	Cicadellidae	<i>Thagria bakeri</i> Nielson	2	*
Phloem-suckers	Hemiptera	Cicadellidae	<i>Thagria ficta</i> Nielson	2	*
Phloem-suckers	Hemiptera	Cicadellidae	<i>Thagria loae</i> Nielson	2	*
Phloem-suckers	Hemiptera	Cicadellidae	<i>Thagria walkeri</i> Nielson	7	*
Phloem-suckers	Hemiptera	Dictyopharidae	Indet. [DICT001]	7	*
Phloem-suckers	Hemiptera	Dictyopharidae	Indet. [DICT003]	4	*
Phloem-suckers	Hemiptera	Flatidae	<i>Colgar elatum</i> Medler	253	*
Phloem-suckers	Hemiptera	Flatidae	<i>Neocromna bistriguttata</i> Stal	119	*
Phloem-suckers	Hemiptera	Flatidae	<i>Papuanella destituta</i> Medler	9	*
Phloem-suckers	Hemiptera	Flatidae	<i>Sephena rubrovenosa</i> Melichar	5	*
Phloem-suckers	Hemiptera	Flatidae	<i>Taparella amata</i> Walker	252	*
Phloem-suckers	Hemiptera	Fulgoridae	Indet. [FULG001]	5	
Phloem-suckers	Hemiptera	Issidae	Indet. [ISSI002]	31	*
Phloem-suckers	Hemiptera	Membracidae	<i>Acanthucus</i> sp. [MEMB006]	3	*
Phloem-suckers	Hemiptera	Membracidae	Indet. [MEMB002]	9	*
Phloem-suckers	Hemiptera	Nogodinidae	Indet. [NOGO001]	11	*
Phloem-suckers	Hemiptera	Ricaniidae	<i>Armacia</i> cf. <i>hyalinata</i> (Donovan)	46	*
Phloem-suckers	Hemiptera	Ricaniidae	Indet. [RICA003]	13	*
Phloem-suckers	Hemiptera	Ricaniidae	Indet. [RICA006]	8	*
Phloem-suckers	Hemiptera	Ricaniidae	Indet. [RICA007]	19	*
Phloem-suckers	Hemiptera	Ricaniidae	Indet. [RICA018]	3	*
Phloem-suckers	Hemiptera	Ricaniidae	<i>Ricania</i> sp. [RICA002]	257	*
Phloem-suckers	Hemiptera	Ricaniidae	<i>Tarundia</i> cf. <i>glaucesenus</i> Melichar	100	*
Phloem-suckers	Hemiptera	Tropiduchidae	Indet. [TROP003]	15	
Phloem-suckers	Hemiptera	Tropiduchidae	Indet. [TROP010]	9	
Root-chewers	Coleoptera	Chrysomelidae	<i>Aulacophora indica</i> Gmelin	24	*
Root-chewers	Coleoptera	Chrysomelidae	<i>Aulacophora indica</i> Gmelin	24	*
Root-chewers	Coleoptera	Chrysomelidae	<i>Aulacophora propinqua</i> Baly	5	
Root-chewers	Coleoptera	Chrysomelidae	<i>Aulacophora</i> sp. [CHRY041]	24	*
Root-chewers	Coleoptera	Chrysomelidae	<i>Aulacophora</i> sp. [CHRY110]	2	*
Root-chewers	Coleoptera	Chrysomelidae	<i>Aulacophora</i> sp. nr. <i>pallidifasciata</i> Jacoby	11	*
Root-chewers	Coleoptera	Chrysomelidae	<i>Cassena</i> sp. [CHRY091]	4	*
Root-chewers	Coleoptera	Chrysomelidae	<i>Deretrichia</i> sp. [CHRY023]	2	
Root-chewers	Coleoptera	Chrysomelidae	<i>Deretrichia</i> sp. [CHRY054]	4	*
Root-chewers	Coleoptera	Chrysomelidae	<i>Arsipoda</i> sp. [CHRY075]	2	
Root-chewers	Coleoptera	Chrysomelidae	<i>Stethotes</i> sp. [CHRY119]	3	
Root-chewers	Coleoptera	Chrysomelidae	Indet. [CHRY126]	7	
Root-chewers	Coleoptera	Chrysomelidae	Indet. [CHRY130]	11	*
Root-chewers	Coleoptera	Chrysomelidae	Indet. [CHRY136]	2	*
Root-chewers	Coleoptera	Chrysomelidae	Indet. [CHRY145]	33	*

Table S3 continued

Guild	Order	Family	Species	N	
Root-chewers	Coleoptera	Chrysomelidae	Indet. [CHRY176]	2	*
Root-chewers	Coleoptera	Chrysomelidae	Indet. [CHRY185]	4	
Root-chewers	Coleoptera	Chrysomelidae	Indet. [CHRY192]	60	*
Root-chewers	Coleoptera	Chrysomelidae	Indet. [CHRY197]	2	
Root-chewers	Coleoptera	Chrysomelidae	Indet. [CHRY199]	14	
Root-chewers	Coleoptera	Chrysomelidae	Indet. [CHRY208]	4	*
Root-chewers	Coleoptera	Chrysomelidae	Indet. [CHRY209]	5	
Root-chewers	Coleoptera	Chrysomelidae	Indet. [CHRY213]	13	*
Root-chewers	Coleoptera	Chrysomelidae	Indet. [CHRY216]	9	*
Root-chewers	Coleoptera	Chrysomelidae	<i>Lema staudingeri</i> Jacoby	8	*
Root-chewers	Coleoptera	Chrysomelidae	<i>Neodrana</i> sp. [CHRY084]	3	
Root-chewers	Coleoptera	Chrysomelidae	<i>Nisotra</i> or <i>Cassena</i> sp. [CHRY111]	3	*
Root-chewers	Coleoptera	Chrysomelidae	<i>Nisotra</i> sp. [CHRY068]	18	*
Root-chewers	Coleoptera	Chrysomelidae	<i>Prasyptera</i> sp. nr. <i>ornata</i> Baly	4	*
Root-chewers	Coleoptera	Chrysomelidae	<i>Rhyparida basalis</i> Baly	2	*
Root-chewers	Coleoptera	Chrysomelidae	<i>Rhyparida cacaovora</i> Gressitt	7	*
Root-chewers	Coleoptera	Chrysomelidae	<i>Rhyparida calami</i> Gressitt	5	*
Root-chewers	Coleoptera	Chrysomelidae	<i>Rhyparida coriacea</i> Jacoby	64	*
Root-chewers	Coleoptera	Chrysomelidae	<i>Rhyparida fasciata</i> Baly	33	*
Root-chewers	Coleoptera	Chrysomelidae	<i>Rhyparida fruhstorferi</i> Jacoby	6	*
Root-chewers	Coleoptera	Chrysomelidae	<i>Rhyparida huona</i> Gressitt	11	*
Root-chewers	Coleoptera	Chrysomelidae	<i>Rhyparida</i> nr. <i>normalis</i> Gressitt	2	
Root-chewers	Coleoptera	Chrysomelidae	<i>Rhyparida picticollis</i> Gressitt	4	*
Root-chewers	Coleoptera	Chrysomelidae	<i>Rhyparida</i> sp. [CHRY182]	6	
Root-chewers	Coleoptera	Chrysomelidae	<i>Rhyparidella sobrina</i> group	167	*
Root-chewers	Coleoptera	Chrysomelidae	<i>Stethotes lateralis</i> Baly	36	*
Root-chewers	Coleoptera	Chrysomelidae	<i>Thyrasia</i> sp. [CHRY056]	11	*
Root-chewers	Coleoptera	Chrysomelidae	<i>Xenidea</i> sp. [CHRY058]	21	*
Xylem-chewers	Coleoptera	Cerambycidae	<i>Acalolepta strandiella</i> (Breuning)	30	
Xylem-chewers	Coleoptera	Cerambycidae	<i>Ceresium pachymerus</i> (Pascoe)	32	*
Xylem-chewers	Coleoptera	Cerambycidae	<i>Dihammus australis</i> (Boisduval)	66	
Xylem-chewers	Coleoptera	Cerambycidae	<i>Dihammus fasciatus</i> (Montrouzier)	15	*
Xylem-chewers	Coleoptera	Cerambycidae	<i>Dihammus</i> sp. [CERA051]	33	*
Xylem-chewers	Coleoptera	Cerambycidae	<i>Eczemotes</i> sp. [CERA106]	2	*
Xylem-chewers	Coleoptera	Cerambycidae	<i>Epepeotes rarus</i> Thompson	2	
Xylem-chewers	Coleoptera	Cerambycidae	<i>Gnoma antilope</i> Boisduval	79	*
Xylem-chewers	Coleoptera	Cerambycidae	Indet. [CERA074]	61	*
Xylem-chewers	Coleoptera	Cerambycidae	Indet. [CERA088]	2	
Xylem-chewers	Coleoptera	Cerambycidae	Indet. [CERA104]	4	*
Xylem-chewers	Coleoptera	Cerambycidae	Indet. [CERA123]	7	
Xylem-chewers	Coleoptera	Cerambycidae	Indet. [CERA124]	146	*
Xylem-chewers	Coleoptera	Cerambycidae	Indet. [CERA134]	54	*
Xylem-chewers	Coleoptera	Cerambycidae	Indet. [CERA136]	9	
Xylem-chewers	Coleoptera	Cerambycidae	Indet. [CERA137]	29	
Xylem-chewers	Coleoptera	Cerambycidae	Indet. [CERA138]	9	*
Xylem-chewers	Coleoptera	Cerambycidae	Indet. [CERA139]	62	*
Xylem-chewers	Coleoptera	Cerambycidae	Indet. [CERA141]	2	*
Xylem-chewers	Coleoptera	Cerambycidae	Indet. [CERA145]	2	
Xylem-chewers	Coleoptera	Cerambycidae	Indet. [CERA150]	47	
Xylem-chewers	Coleoptera	Cerambycidae	Indet. [CERA151]	59	*
Xylem-chewers	Coleoptera	Cerambycidae	Indet. [CERA152]	2	
Xylem-chewers	Coleoptera	Cerambycidae	Indet. [CERA153]	33	
Xylem-chewers	Coleoptera	Cerambycidae	Indet. [CERA154]	28	
Xylem-chewers	Coleoptera	Cerambycidae	<i>Mesosa</i> sp. [CERA135]	3	*
Xylem-chewers	Coleoptera	Cerambycidae	<i>Oleneacampus bilobus strucki</i> Dillon & Dillon	42	*
Xylem-chewers	Coleoptera	Cerambycidae	<i>Prosoplus albofasciatus</i> Breuning	16	*
Xylem-chewers	Coleoptera	Cerambycidae	<i>Prosoplus</i> sp. [CERA020]	21	
Xylem-chewers	Coleoptera	Cerambycidae	<i>Pterolophia</i> cf. <i>variabilis</i> (Pascoe)	84	*
Xylem-chewers	Coleoptera	Cerambycidae	<i>Pterolophia</i> sp. [CERA010]	584	*
Xylem-chewers	Coleoptera	Cerambycidae	<i>Pterolophia</i> sp. [CERA024]	58	*
Xylem-chewers	Coleoptera	Cerambycidae	<i>Pterolophia</i> sp. [CERA055]	282	*
Xylem-chewers	Coleoptera	Cerambycidae	<i>Pterolophia</i> sp. [CERA133]	124	*

Table S3 continued

Guild	Order	Family	Species	N	
Xylem-chewers	Coleoptera	Cerambycidae	<i>Pterolophia</i> sp.[CERA105]	102	*
Xylem-chewers	Coleoptera	Cerambycidae	<i>Tmesisternus monticola</i> Pascoe	41	*
Xylem-chewers	Coleoptera	Cerambycidae	<i>Tmesisternus oblongus</i> Boisduval	3	
Xylem-chewers	Coleoptera	Cerambycidae	<i>Tmesisternus trivittatus</i> Guerin-Meneville	36	*
Xylem-chewers	Coleoptera	Cerambycidae	<i>Xylotrechus australis</i> (Castelnau & Gory)	131	
Xylem-chewers	Coleoptera	Cerambycidae	<i>Xylotrechus</i> cf. <i>australis</i> (Castelnau & Gory)	138	*
Xylem-suckers	Hemiptera	Aphrophoridae	<i>Liorhina disjuncta</i> (Walker)	73	*
Xylem-suckers	Hemiptera	Aphrophoridae	<i>Liorhina</i> sp. [APHR002]	22	*
Xylem-suckers	Hemiptera	Aphrophoridae	<i>Liorhina</i> sp. [APHR003]	8	
Xylem-suckers	Hemiptera	Aphrophoridae	<i>Liorhina</i> sp. [APHR005]	5	
Xylem-suckers	Hemiptera	Aphrophoridae	<i>Liorhina</i> sp. [APHR006]	2	
Xylem-suckers	Hemiptera	Aphrophoridae	<i>Liorhina</i> sp. [APHR014]	2	
Xylem-suckers	Hemiptera	Cercopidae	Indet. [CERC004]	22	*
Xylem-suckers	Hemiptera	Cicadellidae	Indet. [CICA019]	3	*
Xylem-suckers	Hemiptera	Cicadellidae	<i>Nirvanguina</i> sp. [CICA013]	4	*
Xylem-suckers	Hemiptera	Cicadellidae	<i>Roguina</i> sp. nov. [CICA002]	20	*

References

- APG II. (2003). An update of the Angiosperm Phylogeny Group classification for the orders and families of flowering plants. *Bot. J. Linn. Soc.*, 141, 399-436.
- Hulcr, J., Mogia, M., Isua, B. & Novotny, V. (2007). Host specificity of ambrosia and bark beetles (Col., Curculionidae: Scolytinae and Platypodinae) in a New Guinea rainforest. *Ecol. Entomol.*, 32, 762-772.
- Novotny, V., Basset, Y., Miller, S. E., Drozd, P. & Cizek, L. (2002). Host specialisation of leaf chewing insects in a New Guinea rainforest. *J. Anim. Ecol.*, 71, 400-412.
- Novotny, V., Clarke, A. R., Drew, R. A. I., Balagawi, S. & Clifford, B. (2005). Host specialization and species richness of fruit flies (Diptera: Tephritidae) in a New Guinea rain forest. *J. Trop. Ecol.*, 21, 67-77.
- Pokon, R., Novotny, V. & Samuelson, G. A. (2005). Host specialization and species richness of root feeding chrysomelid larvae (Chrysomelidae, Coleoptera) in a New Guinea rainforest. *J. Trop. Ecol.*, 21, 595-604.
- Posada, D. & Buckley, T. (2004). Model selection and model averaging in phylogenetics: Advantages of Akaike Information Criterion and Bayesian approaches over likelihood ratio tests. *Syst. Biol.*, 53, 793-808.
- Soltis, D. E., Soltis, P. S., Mort, M. E., Chase, M. W., Savolainen, V., Hoot, S. B. & Morton, C. M. (1998) Inferring complex phylogenies using parsimony: an empirical approach using three large DNA data sets for angiosperms. *Syst. Biol.*, 47, 32-42.
- Swofford, D. L. (1998). *Phylogenetic Analysis Using Parsimony (*and Other Methods)*. Sinauer Associates, Sunderland, USA.