



Supporting Online Material for

Why Are There So Many Species of Herbivorous Insects in Tropical Rainforests?

Vojtech Novotny,^{1*} Pavel Drozd,² Scott E. Miller,³ Miroslav Kulfan,⁴ Milan Janda,¹
Yves Basset,⁵ George D. Weiblen⁶

*To whom correspondence should be addressed. E-mail: novotny@entu.cas.cz

Published 13 July 2006 on *Science Express*
DOI: 10.1126/science.1129237

This PDF file includes:

Materials and Methods
Figs. S1 and S2
Tables S1 and S2
References
Appendices S1 and S2

Supporting Online Material

Material and Methods

Study areas

Herbivorous insects were studied in two temperate areas, Moravia and Slovakia in Central Europe, and one tropical area, Madang in Papua New Guinea. The Moravia study area in the Poodri Protected Area (18°03-13'E, 49°42-48'N, 200 m asl., Czech Republic) included three fragments of the primary floodplain forest (Rezavka, Polansky Les and Polanska Niva Natural Reserves, 300 ha in total) along a 20 km long section of the Odra River. The forest vegetation was dominated by *Quercus*, *Ulmus*, *Tilia*, *Prunus* and *Fraxinus*. The annual average temperature was 7-8.5°C, the annual average rainfall 600-800 mm (*S1*).

The Slovakia study area of 120 x 80 km between the Borska nizina Lowland and Hronska pahorkatina Hills (16°58'-18°38' E, 47°34-48' N, 100-350 m asl., Slovak Republic) included 15 study sites with lowland thermophilous oak and oak-hornbeam forests. The annual average temperature was 7-10°C, the annual average rainfall 550-900 mm (*S1*).

The Papua New Guinea study area in Madang Province (145°41-8' E, 5°08-14' S, 0-200 m asl.) included three study sites (Baitabag, Ohu, and Mis Villages) within a 10 x 20 km area, encompassing a mosaic of secondary and primary lowland hill forest. The annual average temperature was 26.5°C, and the annual average rainfall 3,600 mm (*S2*).

Estimates of woody plant species richness per hectare in tropical and temperate forests were based on total enumeration of woody stems ≥ 10 cm in diameter at breast height (DBH) in one hectare plots. Published estimates from 36 tropical forest plots were assembled from the three major tropical regions (*S3-S7*). Eighteen temperate forest plots were drawn from the eastern deciduous forests of North America, which are among the most diverse temperate forests known (*S3*, *S5*, *S8*), and New Zealand (*S9*).

Study plants

In Moravia, we studied 14 locally common woody species, including both closely and distantly related species. The study species represented $85 \pm 2.4\%$ of the total forest basal area according to 62 plots 25 m x 25 m each, or 3.75 ha in total, where all plants ≥ 5 cm in diameter at breast height (DBH) were recorded. In Slovakia, eight woody species were studied.

In Papua New Guinea, we used a phylogeny estimate for 60 locally common woody species (*S10*) to select subsets of species with phylogenetic structure matching that of the Moravia and Slovakia study trees. Subsets matching Moravia included $19 \pm 2.2\%$ of the total basal area in the local New Guinea forest, estimated from 100 plots 20 m x 20 m, or four ha in total, where all plants ≥ 5 cm in DBH were recorded. The subset matching Slovakia included $9 \pm 1.4\%$ of the local basal area in New Guinea.

Community phylogeny

A phylogeny estimate for each temperate and tropical tree community sample was obtained by grafting less inclusive single-gene phylogenetic hypotheses into a more inclusive phylogeny of angiosperms based on three genes (*S11*) as described in (*S10*). Additional phylogenetic information was drawn from (*S12-S14*). The assembly of a community phylogeny can follow supertree methods (*S15*) but one crucial difference is that only members of the community are retained in the supertree while all other lineages are pruned away.

Phylogenetic branch lengths are also important to consideration for community samples. When branch lengths are assumed equal, using the number of intervening nodes as a proxy for phylogenetic

distance, relationships between intensively sampled congeneric species are given the same weight as relationships among representatives of major clades. Branch length information can distinguish between these two very different cases, short distances between congenics and long distances between members of major lineages. Branch lengths for community phylogenies of temperate trees were approximated from aligned DNA sequences encoding ribulose-1,5-bisphosphate carboxylase (rbcL). Sequences 1,380 base pairs in length were obtained from Genbank for each tree species and the closest available relative was substituted as indicated in Table S1 when particular taxa were not available. Branch lengths were optimized on each community phylogeny under parsimony using PAUP* (S16).

The same approach was applied to estimate phylogenetic branch lengths for tropical tree community samples, except that there were an insufficient number of rbcL sequences in Genbank for *Ficus* and Euphorbiaceae. Branch lengths were estimated for *Ficus* from the internal transcribed spacer region of nuclear ribosomal DNA (ITS) and for Euphorbiaceae from the ndhF gene encoding a subunit of NADH-plastoquinone oxidoreductase. ITS and ndhF branch lengths were scaled to the relative rate of change in rbcL compared between pairs of taxa. For example, the relative rate of ITS to rbcL was calculated by counting the absolute number of character differences in each gene between *Ficus heterophylla* and *F. pumila*. rbcL sequences for *F. heterophylla* (AF500351) and *F. pumila* (AF500352) differed by 12 substitutions compared to 36 substitutions in ITS, yielding a rate of 0.30 by which ITS branch lengths were multiplied to express them in rbcL units on the community phylogeny. The rate used for ndhF relative to rbcL was 0.52 as described in (S10). We rescaled the branch lengths by these rates to approximate the phylogenetic distance between taxa sampled for genes with different rates of molecular divergence.

Next we obtained a community phylogeny for which all distances from the root of the tree to the tips are equal, also known as an ultrametric tree. Ultrametricity is necessary to make direct comparisons of phylogenetic distance (as measured by rescaled molecular branch lengths) among pairs of host species distributed across the phylogeny. Each individual molecular dataset rejected a molecular clock assumption, so we applied nonparametric rate smoothing (S17) as implemented in the program TreeEdit (S18). Ultrametric distances between ancestral and descendant nodes from temperate and tropical community phylogenies were compared using TreeMap software (S19).

Insect sampling

In Moravia, all externally feeding folivorous insects were hand collected from the foliage of 14 tree species throughout the growing seasons during 1999-2001. Sampling effort amounted to 150 m² of foliage inspected per tree species. All 14 tree species were sampled at each of the three study forests.

In Slovakia, all externally feeding caterpillars (Lepidoptera) were sampled from 450 m² of foliage inspected per tree species. For each tree species, 25 m² of foliage were sampled on six days throughout the growing season. Each species was sampled during three growing seasons, either at three different sites, or at two sites with one site sampled in two different years. Sampling included 15 different sites and extended from 1978 to 2002 as described in detail previously (S20-S22).

In Papua New Guinea, all externally feeding folivorous insects were hand collected from the foliage of 14 tree species. Each tree species was sampled for at least one year between 1994-2000. The sampling effort amounted to 1,500 m² of foliage per tree species. All 14 tree species were sampled at each of the three study sites as described in (S23).

Laboratory rearing procedures were identical for all three study areas. Each insect was provided with fresh leaves of the plant species from which it was collected and only those that fed were retained in the analyses. Larvae were identified to morphospecies and/or reared to adults. All insects assigned to morphospecies were later verified and identified by taxonomic specialists. Taxonomic methods for

Papua New Guinea material are detailed in (S23). Vouchers are deposited at the University of Ostrava, Ostrava (Moravia specimens), Comenius University, Bratislava (Slovakia specimens) and the National Agricultural Research Institute of Papua New Guinea, Bishop Museum, Honolulu and Smithsonian Institution, Washington (Papua New Guinea specimens).

Predation pressure on the foliage of the studied trees was assessed as the proportion of live baits, represented by *Calliphora vicina* fly larvae in Moravia and *Microcerotermes biroi* termite workers in Papua New Guinea, that were attacked by predators during 30 minutes of exposure on the foliage (S24). Twenty experiments, each including 30 baits exposed on a single tree, were conducted on each study tree species in Moravia and Papua New Guinea (Table S2).

Data analysis

Only feeding insects and host plant records supported by more than one feeding observation were included in the analysis in order to exclude tourists and marginal feeders. The number of species per 100 m² of foliage was interpolated from the entire sample obtained for each tree species by rarefaction.

Host specificity was measured as the number of study species used as hosts by a particular herbivorous species. This simple count of host species was appropriate given a nearly identical phylogenetic distribution of temperate and tropical study plants.

Community similarity was assessed by the Chao-Sorensen index, a modification of the classical Sorensen index that corrects its bias due to incomplete sampling of communities, calculated by EstimateS (S25). The similarity of herbivore communities was correlated with the phylogenetic distance of their host plants, for all pair-wise comparisons between the studied plant species. Phylogenetic distance was estimated as the absolute number of substitutions between pairs of species in the ultrametric tree using TreeEdit (S18). The significance of the correlation between herbivore community similarity and host phylogenetic distance was evaluated with the Mantel test.

The differences in species richness and density of herbivores between temperate and tropical trees were tested by t-test. Further, comparative analyses incorporating phylogenetic relationships of host plants were also performed because tropical and temperate tree species are not statistically independent. For the Moravia-New Guinea and Slovakia-New Guinea comparisons of species richness and abundance, supertrees combining temperate and tropical taxa were assembled. Molecular branch lengths were estimated and rate-smoothed under parsimony as described above. Phylogenetic generalized least squares (PGLS) regression analysis was performed using the program COMPARE (S26) with temperate versus tropical as a categorical predictor variable and herbivore species richness or abundance per host species as the response variable. The standard error of the regression slope was used to test the significance of differences between tropical and temperate herbivore communities as described in (S26).

Supporting References

- S1. A. Götz, *Atlas of the Czechoslovak Socialist Republic* (Czechoslovak Academy of Sciences, Praha, 1966).
- S2. J. R. McAlpine, R. Keig, R. Falls, *Climate of Papua New Guinea* (CSIRO and Australian National Univ. Press, Canberra 1993).
- S3. E. G. Leigh, *Tropical Forest Ecology: A View from Barro Colorado* (Oxford Univ. Press, Oxford, 1999).
- S4. M. Oatham, B. M. Beehler, in *Forest Biodiversity Research, Monitoring and Modeling: Conceptual Background and Old World Case Studies*, F. Dallmeier, J. Comisky Eds. (Parthenon, Paris 1998), pp. 613-631.

- S5. M. F. Quigley, W. J. Pratt, *Ecol. Monogr.* **73**, 87 (2003).
- S6. D. D. Wright, J. H. Jessen, P. Burke, H. Gomez de Silva Garza, *Biotropica* **29**, 250 (1997).
- S7. G. D. Weiblen, *Science in New Guinea* **24**, 23 (1998).
- S8. R. T. Busing, P. S. White, *Oikos* **78**, 562 (1997).
- S9. P. J. Bellingham, G. H. Stewart, R. B. Allen, *J. Veg. Sci.* **10**, 825 (1999).
- S10. G. D. Weiblen, C. O. Webb, V. Novotny, Y. Basset, S. E. Miller, *Ecology* **87**, S62 (2006).
- S11. D. E. Soltis et al., *Syst. Biol.* **47**, 32 (1998).
- S12. P. S. Manos, A. M. Stanford, *Int. J. Plant Sci.* **162**, S77 (2001).
- S13. C. S. Campbell et al., *Am. J. Bot.* **82**, 903 (1995).
- S14. C. O. Webb, M. J. Donoghue, *PhyloMatic: a database for applied phylogenetics*, <http://www.phylodiversity.net/phyloMatic/> (2006).
- S15. O. R. P. Bininda-Emonds, *Phylogenetic supertrees: Combining information to reveal the tree of life* (Springer, New York, 2004).
- S16. D. L. Swofford, *Phylogenetic Analysis Using Parsimony (*and Other Methods)* (Sinauer Associates, Sunderland, Massachusetts, 1998).
- S17. M. J. Sanderson, *Mol. Biol. Evol.* **14**, 1218 (1997).
- S18. A. Rambaut, M. Charleston, *TreeEdit: phylogenetic tree editor* (Oxford Univ., Oxford, 2001).
- S19. R. D. M. Page, *Syst. Biol.* **45**, 151 (1996).
- S20. M. Kulfan, *Biologia (Bratislava)* **46**, 927 (1991).
- S21. M. Kulfan, M. Holecova, J. Fajcik, *Biologia (Bratislava)*, in press (2006).
- S22. M. Kulfan, L. Septak, P. Degma, *Biologia (Bratislava)* **52**, 247 (1997).
- S23. S. E. Miller, V. Novotny, Y. Basset, *Proc. Entomol. Soc. Wash.* **105**, 1035 (2003).
- S24. V. Novotny et al., *Aust. J. Ecol.* **24**, 477 (1999).
- S25. R. K. Colwell, *EstimateS: Statistical estimation of species richness and shared species from samples. Version 7.5* (URL <purl.oclc.org/estimates>, 2005).
- S26. E. P. Martins, *COMPARE 4.6. Computer programs for the statistical analysis of comparative data* (Dept. Biology, Indiana Univ., Bloomington, Indiana, 2003).
- S27. APGII, *Bot. J. Linn. Soc.* **141**, 399 (2003).
- S28. M. J. Laidlaw, R. L. Kitching, K. Damas, R. Kiapranis, *Biotropica* **38**, in press (2006).

Corrected 25 August 2006

On page 2, in the second paragraph under “Study areas,” “oak-hawthorn” has been changed to “oak-hornbeam.”

On page 5, reference S10 has been updated to include the volume and page numbers.

Tables, Figures and Appendices

Table S1. Woody plant species sampled for insect herbivores in temperate and tropical forests. Major clades, orders and families follow the Angiosperm Phylogeny Group classification (S27). DNA sequences retrieved from Genbank were used to estimate branch lengths on a community phylogeny for the set of tree species sampled at each study site. When DNA sequences were unavailable for a particular species, a sequence from a related species was substituted for the purpose of branch length estimation.

Clade	Order	Family	Species	Genbank accession
Temperate species				
Asterids	Cornales	Cornaceae	<i>Cornus sanguinea</i> L.	L11215 ¹
Asterids I	Lamiales	Oleaceae	<i>Fraxinus excelsior</i> L.	AJ001766 ²
Asterids II	Dipsacales	Adoxaceae	<i>Sambucus nigra</i> L.	AF446928 ³
Eurosids I	Fabales	Fabaceae	<i>Robinia pseudoacacia</i> L.	U74220
Eurosids I	Fagales	Betulaceae	<i>Alnus glutinosa</i> (L.) Gaertn.	AY263926 ⁴
Eurosids I	Fagales	Betulaceae	<i>Alnus incana</i> Medik.	X56618
Eurosids I	Fagales	Betulaceae	<i>Carpinus betulus</i> L.	AY263928
Eurosids I	Fagales	Betulaceae	<i>Corylus avellana</i> L.	AY263929
Eurosids I	Fagales	Fagaceae	<i>Fagus sylvatica</i> L.	L13340
Eurosids I	Fagales	Fagaceae	<i>Quercus cerris</i> L.	AB125017
Eurosids I	Fagales	Fagaceae	<i>Quercus petraea</i> (Matt.) Liebl.	AB125024
Eurosids I	Fagales	Fagaceae	<i>Quercus robur</i> L.	AB125025
Eurosids I	Malpighiales	Salicaceae	<i>Populus tremula</i> L.	AJ418827
Eurosids I	Rosales	Rosaceae	<i>Crataegus monogyna</i> Jacq.	U06799 ⁵
Eurosids I	Rosales	Rosaceae	<i>Prunus padus</i> L.	AF411485
Eurosids I	Rosales	Rosaceae	<i>Prunus spinosa</i> L.	AF227904
Eurosids I	Rosales	Ulmaceae	<i>Ulmus glabra</i> Huds.	D86316 ⁶
Eurosids I	Rosales	Ulmaceae	<i>Ulmus laevis</i> Pall.	AF500337 ⁷
Eurosids II	Malvales	Tiliaceae	<i>Tilia cordata</i> Mill.	AF022127 ⁸
Eurosids II	Sapindales	Sapindaceae	<i>Acer campestre</i> L.	L01881 ⁹
Tropical species				
Eurosids I	Rosales	Moraceae	<i>Artocarpus camansi</i> Blanco	AF500345 ¹⁰
Eurosids I	Malpighiales	Flacourtiaceae	<i>Casearia erythrocarpa</i> Sleum.	AF206746 ¹¹
Eurosids I	Rosales	Ulmaceae	<i>Celtis philippensis</i> Blanco	D86309 ¹²
Eurosids I	Rosales	Moraceae	<i>Ficus conocephalifolia</i> Ridley	AF165381
Eurosids I	Rosales	Moraceae	<i>Ficus copiosa</i> Steud.	AF165382
Eurosids I	Rosales	Moraceae	<i>Ficus dammaropsis</i> Diels	AF165383
Eurosids I	Rosales	Moraceae	<i>Ficus wassa</i> Roxb.	AF165418
Eurosids I	Malpighiales	Euphorbiaceae	<i>Homalanthus novoguineensis</i> (Warb.) K. Schum.	AY374315
Eurosids I	Malpighiales	Euphorbiaceae	<i>Macaranga aleuritoides</i> F. Muell.	AY374319
Eurosids I	Malpighiales	Euphorbiaceae	<i>Macaranga quadriglandulosa</i> Warb.	AY374318
Eurosids I	Malpighiales	Euphorbiaceae	<i>Mallotus mollissimus</i> (Geisel.) A. Shaw	AY374322
Euasterids II	Apiales	Araliaceae	<i>Osmoxylon sessiliflorum</i> (Lauterb.) W. R. Philipson	U50257 ¹³
Eurosids I	Malpighiales	Euphorbiaceae	<i>Pimelodendron amboinicum</i> Hassk.	AY374324
Eurosids II	Sapindales	Sapindaceae	<i>Pometia pinnata</i> Forster	AJ40300 ¹⁴
Euasterids I	Lamiales	Verbenaceae	<i>Premna obtusifolia</i> R.Br.	U28883 ¹⁵
Eurosids I	Fabales	Fabaceae	<i>Pterocarpus indicus</i> Willd.	AF308721 ¹⁶
Euasterids I	Gentianales	Rubiaceae	<i>Randia schumanniana</i> Merrill & Perry	AJ318456
Eurosids II	Malvales	Malvaceae	<i>Sterculia schumanniana</i> (Lauterb.) Mildbr.	AJ233140 ¹⁷

Sequences substituted for study species not available in Genbank included ¹*Cornus florida* L., ²*Olea europaea* L., ³*Sambucus racemosa* L., ⁴*Alnus sinuata* Rydb., ⁵*Crataegus columbiana* Howell, ⁶*Ulmus parvifolia* Jacq., ⁷*Ulmus americana* L., ⁸*Tilia americana* L., ⁹*Acer saccharum* Marsh., ¹⁰*Artocarpus altilis* (Parkinson) Fosberg, ¹¹*Casearia sylvestris* Sw., ¹²*Celtis sinensis* Pers., ¹³*Teraplasandra hawaiiensis* A. Gray, ¹⁴*Talisia nervosa* Radlk., ¹⁵*Premna microphylla* Turcz., ¹⁶*Willardia mexicana* Rose, and ¹⁷*Sterculia apetala* Druce.

Table S2. Predation pressure on the foliage of temperate and tropical tree species, reported as the percentage of live baits (out of 600 per tree species) attacked by predators (mostly ants) during 30-minute periods of exposure on the foliage. Predation pressure is significantly different between temperate and tropical forests (t-test, $P < 0.001$).

Temperate species	Predation	Tropical species	Predation
<i>Cornus sanguinea</i>	1.0	<i>Osmoxylon sessiliflorum</i>	25.2
<i>Fraxinus excelsior</i>	2.0	<i>Premna obtusifolia</i>	40.3
<i>Sambucus nigra</i>	0.8	<i>Randia schumanniana</i>	32.7
<i>Populus tremula</i>	1.8	<i>Pterocarpus indicus</i>	31.3
<i>Padus avium</i>	1.2	<i>Celtis philippensis</i>	20.2
<i>Ulmus glabra</i>	2.0	<i>Ficus wassa</i>	22.7
<i>Ulmus laevis</i>	0.8	<i>Ficus dammaropsis</i>	26.0
<i>Alnus incana</i>	1.0	<i>Homalanthus novoguineensis</i>	13.3
<i>Alnus glutinosa</i>	1.6	<i>Pimelodendron amboinicum</i>	12.7
<i>Carpinus betulus</i>	1.2	<i>Macaranga quadriglandulosa</i>	25.7
<i>Corylus avelana</i>	3.0	<i>Macaranga aleuritoides</i>	48.0
<i>Quercus robur</i>	2.6	<i>Casearia erythrocarpa</i>	24.7
<i>Tilia cordata</i>	2.8	<i>Sterculia schumanniana</i>	33.5
<i>Acer campestre</i>	1.2	<i>Pometia pinnata</i>	40.5
Average	1.6	Average	28.3

Figure S1. The relationship between latitude and species richness of woody plants ≥ 10 cm DBH from 58 one-hectare plots worldwide, including our two study areas (S28, S4-S9, P. J. Bellingham, pers. comm, and references in S3). Woody plant species richness declined significantly with increasing latitude ($R^2 = 0.624$).

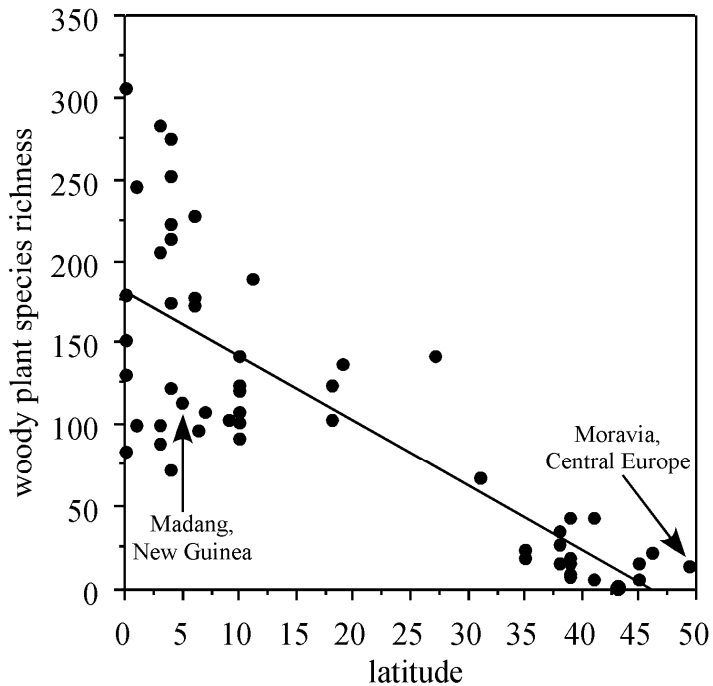
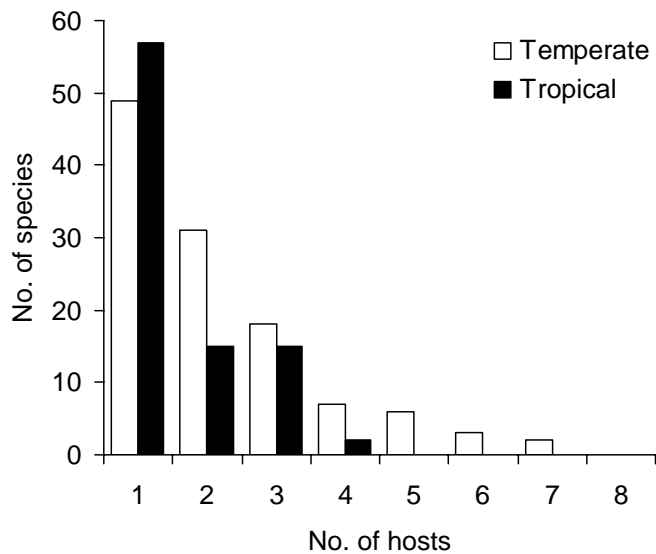


Figure S2. Host specificity of Lepidoptera on temperate and tropical trees. The number of hosts among eight study species of trees (Fig. 1C) is shown for Slovakia and New Guinea. The median host range of two temperate tree species per herbivore species was significantly different from the median host range of a single tropical tree species per herbivore (Mann-Whitney test, $P < 0.001$).



Appendix S1. Taxonomy and abundance of herbivore species from Central Europe (Moravia and Slovakia). Morphospecies with unknown adult stages are marked with an asterisk. Morphospecies codes are used for unidentified species. Note that only Lepidoptera were studied in Slovakia.

Order	Family	Species	Mor.	Slov.
Lepidoptera	Arctiidae	<i>Hyphantria cunea</i> (Drury)	0	2
Lepidoptera	Bucculatricidae	<i>Bucculatrix albedinella</i> (Zeller)	22	0
Lepidoptera	Bucculatricidae	<i>Bucculatrix thoracella</i> (Thunberg)	187	0
Lepidoptera	Bucculatricidae	<i>Bucculatrix ulmella</i> Zeller	78	0
Lepidoptera	Depressariidae	<i>Semioscopis avellanella</i> (Huebner)	7	2
Lepidoptera	Drepanidae	<i>Drepana falcataria</i> (Linnaeus)	5	0
Lepidoptera	Drepanidae	<i>Ochropacha duplaris</i> (Linnaeus)	6	0
Lepidoptera	Drepanidae	<i>Polyploca ridens</i> (Fabricius)	0	3
Lepidoptera	Drepanidae	<i>Tethea</i> sp. [TDREP001]	1	0
Lepidoptera	Drepanidae	<i>Watsonalla binaria</i> (Hufnagel)	0	3
Lepidoptera	Drepanidae	<i>Watsonalla cultraria</i> (Fabricius)	0	9
Lepidoptera	Gelechiidae	<i>Teleiodes luculellus</i> (Huebner)	1	1
Lepidoptera	Gelechiidae	<i>Teleiodes paripunctellus</i> (Thunberg)	0	8
Lepidoptera	Gelechiidae	<i>Anacampsis populella</i> (Clerck)	2	0
Lepidoptera	Gelechiidae	<i>Gelechia scotinella</i> Herrich-Schaeffer	0	1
Lepidoptera	Gelechiidae	<i>Pseudotelphusa scalella</i> (Scopoli)	0	9
Lepidoptera	Gelechiidae	<i>Psoricoptera gibbosella</i> (Zeller)	1	3
Lepidoptera	Gelechiidae	<i>Recurvaria leucatella</i> (Clerck)	0	2
Lepidoptera	Gelechiidae	<i>Teleiodes decorellus</i> (Haworth)	0	4
Lepidoptera	Geometridae	<i>Agriopsis aurantiaria</i> (Huebner)	18	65
Lepidoptera	Geometridae	<i>Agriopsis bajaran</i> (Dennis et Schiffermueller)	0	23
Lepidoptera	Geometridae	<i>Agriopsis leucophaearia</i> (Dennis et Schiffermueller)	0	25
Lepidoptera	Geometridae	<i>Agriopsis marginaria</i> (Fabricius)	4	63
Lepidoptera	Geometridae	<i>Alcis repandata</i> (Linnaeus)	7	0
Lepidoptera	Geometridae	<i>Alsophila aceraria</i> (Dennis et Schiffermueller)	0	34
Lepidoptera	Geometridae	<i>Alsophila aescularia</i> (Dennis et Schiffermueller)	8	89
Lepidoptera	Geometridae	<i>Apeira syringaria</i> (Linnaeus)	0	1
Lepidoptera	Geometridae	<i>Apocheima hispidarium</i> (Dennis et Schiffermueller)	1	1
Lepidoptera	Geometridae	<i>Apocheima pilosarium</i> (Dennis et Schiffermueller)	8	7
Lepidoptera	Geometridae	<i>Archiearis notha</i> (Huebner)	1	0
Lepidoptera	Geometridae	<i>Ascotis selenaria</i> (Dennis et Schiffermueller)	6	1
Lepidoptera	Geometridae	<i>Asthena albulata</i> (Hufnagel)	5	2
Lepidoptera	Geometridae	<i>Asthena anseraria</i> (Herrich-Schaeffer)	3	0
Lepidoptera	Geometridae	<i>Biston betularius</i> (Linnaeus)	13	16
Lepidoptera	Geometridae	<i>Biston stratarius</i> (Hufnagel)	0	4
Lepidoptera	Geometridae	<i>Cabera pusaria</i> (Linnaeus)	13	2
Lepidoptera	Geometridae	<i>Campaea margaritata</i> (Linnaeus)	17	43
Lepidoptera	Geometridae	<i>Chiasmia alternata</i> (Dennis et Schiffermueller)	3	11
Lepidoptera	Geometridae	<i>Chlorissa viridata</i> (Linnaeus)	0	3
Lepidoptera	Geometridae	<i>Chloroclysta miata</i> (Linnaeus)	0	4
Lepidoptera	Geometridae	<i>Colotois pennaria</i> (Linnaeus)	14	23
Lepidoptera	Geometridae	<i>Cyclophora albipunctata</i> (Hufnagel)	2	0
Lepidoptera	Geometridae	<i>Cyclophora annularia</i> (Fabricius)	70	0
Lepidoptera	Geometridae	<i>Cyclophora linearia</i> (Huebner)	18	24
Lepidoptera	Geometridae	<i>Cyclophora pendularia</i> (Clerck)	8	0
Lepidoptera	Geometridae	<i>Cyclophora punctaria</i> (Linnaeus)	29	11
Lepidoptera	Geometridae	<i>Cyclophora quercimontaria</i> (Bastelberger)	0	6
Lepidoptera	Geometridae	<i>Cyclophora ruficiliaria</i> (Herrich-Schaeffer)	0	19
Lepidoptera	Geometridae	<i>Cyclophora</i> sp.* [TGEOM001]	3	0
Lepidoptera	Geometridae	<i>Ectropis crepuscularia</i> (Dennis et Schiffermueller)	45	14

Appendix S1 Continuing

Order	Family	Species	Mor.	Slov.
Lepidoptera	Geometridae	<i>Electrophaes corylata</i> (Thunberg)	0	1
Lepidoptera	Geometridae	<i>Ematurga atomaria</i> (Linnaeus)	0	1
Lepidoptera	Geometridae	<i>Ennomos autumnarius</i> (Werneburg)	1	0
Lepidoptera	Geometridae	<i>Ennomos erosarius</i> (Dennis et Schiffermueller)	0	1
Lepidoptera	Geometridae	<i>Ennomos quercinarius</i> (Hufnagel)	0	25
Lepidoptera	Geometridae	<i>Epirrita dilutata</i> (Dennis et Schiffermueller)	9	16
Lepidoptera	Geometridae	<i>Erannis defoliaria</i> (Clerck)	3	30
Lepidoptera	Geometridae	<i>Eupithecia dodoneata</i> Guenee	2	1
Lepidoptera	Geometridae	<i>Eupithecia</i> sp.* [TGEOM002]	7	0
Lepidoptera	Geometridae	<i>Hemithea aestivaria</i> (Huebner)	13	7
Lepidoptera	Geometridae	<i>Hypomecis punctinalis</i> (Scopoli)	8	38
Lepidoptera	Geometridae	<i>Hypomecis roboraria</i> (Dennis et Schiffermueller)	0	5
Lepidoptera	Geometridae	<i>Lomaspilis marginata</i> (Linnaeus)	24	0
Lepidoptera	Geometridae	<i>Lomographa bimaculata</i> (Fabricius)	4	0
Lepidoptera	Geometridae	<i>Lomographa temerata</i> (Dennis et Schiffermueller)	0	15
Lepidoptera	Geometridae	<i>Lycia hirtaria</i> (Clerck)	27	7
Lepidoptera	Geometridae	<i>Lycia pomonaria</i> (Huebner)	2	0
Lepidoptera	Geometridae	<i>Melanchnra persicariae</i> (Linnaeus)	1	0
Lepidoptera	Geometridae	<i>Operophtera brumata</i> (Linnaeus)	228	496
Lepidoptera	Geometridae	<i>Operophtera fagata</i> (Scharfenberg)	0	11
Lepidoptera	Geometridae	<i>Parectropis similaria</i> (Hufnagel)	2	3
Lepidoptera	Geometridae	<i>Peribatodes rhomboidarius</i> (Dennis et Schiff.)	3	0
Lepidoptera	Geometridae	<i>Plagodis dolabraria</i> (Linnaeus)	8	4
Lepidoptera	Geometridae	<i>Plagodis pulveraria</i> (Linnaeus)	0	1
Lepidoptera	Geometridae	<i>Plemyria rubiginata</i> (Dennis et Schiffermueller)	1	0
Lepidoptera	Geometridae	<i>Selenia dentaria</i> (Fabricius)	2	0
Lepidoptera	Geometridae	<i>Selenia</i> sp.* [TGEOM003]	2	0
Lepidoptera	Geometridae	<i>Selenia tetralunaria</i> (Hufnagel)	2	0
Lepidoptera	Geometridae	<i>Theria rupicapraria</i> (Dennis et Schiffermueller)	0	194
Lepidoptera	Geometridae	Unidentified* [TGEOM004]	1	0
Lepidoptera	Geometridae	Unidentified* [TGEOM005]	1	0
Lepidoptera	Geometridae	Unidentified* [TGEOM006]	1	0
Lepidoptera	Geometridae	Unidentified* [TGEOM007]	3	0
Lepidoptera	Geometridae	Unidentified* [TGEOM008]	2	0
Lepidoptera	Geometridae	Unidentified* [TGEOM009]	2	0
Lepidoptera	Geometridae	Unidentified* [TGEOM010]	2	0
Lepidoptera	Gracillariidae	<i>Caloptilia betulicola</i> (Hering)	1	0
Lepidoptera	Gracillariidae	<i>Caloptilia semifascia</i> (Haworth)	1	0
Lepidoptera	Gracillariidae	<i>Caloptilia syringella</i> (Fabricius)	4	0
Lepidoptera	Gracillariidae	<i>Parornix carpinella</i> (Frey)	2	0
Lepidoptera	Gracillariidae	<i>Parornix devoniella</i> (Stainton)	1	0
Lepidoptera	Lasiocampidae	<i>Eriogaster catax</i> (Linnaeus)	0	11
Lepidoptera	Lasiocampidae	<i>Malacosoma neustria</i> (Linnaeus)	0	1
Lepidoptera	Lasiocampidae	<i>Poecilocampa populi</i> (Linnaeus)	0	4
Lepidoptera	Lasiocampidae	<i>Trichiura crataegi</i> (Linnaeus)	0	1
Lepidoptera	Limacodidae	<i>Apoda limacodes</i> (Hufnagel)	0	19
Lepidoptera	Limacodidae	<i>Heterogenea asella</i> (Dennis et Schiffermueller)	0	5
Lepidoptera	Lycaenidae	<i>Neozephyrus quercus</i> (Linnaeus)	0	7
Lepidoptera	Lycaenidae	<i>Satyrium acaciae</i> (Fabricius)	0	8
Lepidoptera	Lycaenidae	<i>Satyrium pruni</i> (Linnaeus)	0	3
Lepidoptera	Lymantriidae	<i>Calliteara pudibunda</i> (Linnaeus)	3	20
Lepidoptera	Lymantriidae	<i>Euproctis similis</i> (Fuessly)	0	8
Lepidoptera	Lymantriidae	<i>Lymantria dispar</i> (Linnaeus)	0	103
Lepidoptera	Lymantriidae	<i>Orgyia antiqua</i> (Linnaeus)	4	9

Appendix S1 Continuing

Order	Family	Species	Mor.	Slov.
Lepidoptera	Lymantriidae	<i>Orgyia recens</i> (Huebner)	0	4
Lepidoptera	Lymantriidae	<i>Parocneria detrita</i> (Esper)	0	1
Lepidoptera	Noctuidae	<i>Acronicta megacephala</i> (Dennis et Schiffermueller)	1	0
Lepidoptera	Noctuidae	<i>Acronicta psi</i> (Linnaeus)	0	1
Lepidoptera	Noctuidae	<i>Acronicta</i> sp. [TNOCT001]	3	0
Lepidoptera	Noctuidae	<i>Acronicta tridens</i> (Dennis et Schiffermueller)	0	4
Lepidoptera	Noctuidae	<i>Agrochola helvola</i> (Linnaeus)	0	1
Lepidoptera	Noctuidae	<i>Agrochola litura</i> (Linnaeus)	0	1
Lepidoptera	Noctuidae	<i>Agrochola macilenta</i> (Huebner)	4	1
Lepidoptera	Noctuidae	<i>Allophytes oxyacanthae</i> (Linnaeus)	0	25
Lepidoptera	Noctuidae	<i>Amphipyra pyramidea</i> (Linnaeus)	20	42
Lepidoptera	Noctuidae	<i>Asteroscopus sphinx</i> (Hufnagel)	4	4
Lepidoptera	Noctuidae	<i>Atethmia centrago</i> (Haworth)	3	0
Lepidoptera	Noctuidae	<i>Brachionycha nubeculosa</i> (Esper)	0	1
Lepidoptera	Noctuidae	<i>Catocala fulminea</i> (Scopoli)	0	1
Lepidoptera	Noctuidae	<i>Conistra vaccinii</i> (Linnaeus)	18	18
Lepidoptera	Noctuidae	<i>Cosmia affinis</i> (Linnaeus)	1	0
Lepidoptera	Noctuidae	<i>Cosmia pyralina</i> (Dennis et Schiffermueller)	3	14
Lepidoptera	Noctuidae	<i>Cosmia trapezina</i> (Linnaeus)	67	109
Lepidoptera	Noctuidae	<i>Dichonia convergens</i> (Dennis et Schiffermueller)	0	4
Lepidoptera	Noctuidae	<i>Diloba caeruleocephala</i> (Linnaeus)	0	50
Lepidoptera	Noctuidae	<i>Dryobotodes monochroma</i> (Esper)	0	11
Lepidoptera	Noctuidae	<i>Egira conspicillaris</i> (Linnaeus)	0	1
Lepidoptera	Noctuidae	<i>Eupsilia transversa</i> (Hufnagel)	22	32
Lepidoptera	Noctuidae	<i>Herminia grisealis</i> (Dennis et Schiffermueller)	3	0
Lepidoptera	Noctuidae	<i>Lacanobia oleracea</i> (Linnaeus)	4	0
Lepidoptera	Noctuidae	<i>Lithophane consocia</i> (Borkhausen)	1	0
Lepidoptera	Noctuidae	<i>Lithophane ornitopus</i> (Hufnagel)	0	9
Lepidoptera	Noctuidae	<i>Mesogona acetosellae</i> (Dennis et Schiffermueller)	0	2
Lepidoptera	Noctuidae	<i>Minuacia lunaris</i> (Dennis et Schiffermueller)	0	1
Lepidoptera	Noctuidae	<i>Moma alpium</i> (Osbeck)	0	4
Lepidoptera	Noctuidae	<i>Orthosia cerasi</i> (Fabricius)	11	25
Lepidoptera	Noctuidae	<i>Orthosia cruda</i> (Dennis et Schiffermueller)	0	27
Lepidoptera	Noctuidae	<i>Orthosia gothica</i> (Linnaeus)	9	59
Lepidoptera	Noctuidae	<i>Orthosia incerta</i> (Hufnagel)	0	27
Lepidoptera	Noctuidae	<i>Orthosia miniosa</i> (Dennis et Schiffermueller)	0	1
Lepidoptera	Noctuidae	<i>Orthosia munda</i> (Dennis et Schiffermueller)	0	18
Lepidoptera	Noctuidae	Unidentified* [TNOCT002]	7	0
Lepidoptera	Noctuidae	Unidentified* [TNOCT003]	1	0
Lepidoptera	Noctuidae	Unidentified* [TNOCT004]	1	0
Lepidoptera	Noctuidae	Unidentified* [TNOCT005]	2	0
Lepidoptera	Noctuidae	Unidentified* [TNOCT006]	2	0
Lepidoptera	Noctuidae	<i>Xanthia aurago</i> (Dennis et Schiffermueller)	1	0
Lepidoptera	Nolidae	<i>Bena bicolorana</i> (Fuessly)	0	9
Lepidoptera	Nolidae	<i>Nola confusalis</i> (Herrich-Schaeffer)	0	1
Lepidoptera	Nolidae	<i>Nycteola revayana</i> (Scopoli)	0	4
Lepidoptera	Nolidae	<i>Pseudoips prasinanus</i> (Linnaeus)	2	12
Lepidoptera	Notodontidae	<i>Clostera curtula</i> (Linnaeus)	1	0
Lepidoptera	Notodontidae	<i>Clostera pigra</i> (Hufnagel)	4	0
Lepidoptera	Notodontidae	<i>Drymonia dodonaea</i> (Dennis et Schiffermueller)	0	1
Lepidoptera	Notodontidae	<i>Drymonia querna</i> (Dennis et Schiffermueller)	0	2
Lepidoptera	Notodontidae	<i>Drymonia ruficornis</i> (Hufnagel)	1	2
Lepidoptera	Notodontidae	<i>Furcula furcula</i> (Clerck)	0	1
Lepidoptera	Notodontidae	<i>Notodonta dromedarius</i> (Linnaeus)	11	0

Appendix S1 Continuing

Order	Family	Species	Mor.	Slov.
Lepidoptera	Notodontidae	<i>Notodonta ziczac</i> (Linnaeus)	1	0
Lepidoptera	Notodontidae	<i>Phalera bucephala</i> (Linnaeus)	66	28
Lepidoptera	Notodontidae	<i>Pterostoma palpinum</i> (Clerck)	8	1
Lepidoptera	Notodontidae	<i>Ptilodon capucina</i> (Linnaeus)	0	10
Lepidoptera	Notodontidae	<i>Spatalia argentina</i> (Dennis et Schiffermueller)	0	2
Lepidoptera	Notodontidae	<i>Thaumetopoea processionea</i> (Linnaeus)	0	1
Lepidoptera	Nymphalidae	<i>Polygonia c-album</i> (Linnaeus)	2	0
Lepidoptera	Oecophoridae	<i>Carcina quercana</i> (Fabricius)	0	51
Lepidoptera	Oecophoridae	<i>Diurnea fagella</i> (Dennis et Schiffermueller)	14	110
Lepidoptera	Oecophoridae	<i>Diurnea lipsiella</i> (Dennis et Schiffermueller)	0	16
Lepidoptera	Pantheidae	<i>Colocasia coryli</i> (Linnaeus)	10	11
Lepidoptera	Psychidae	<i>Apterona helicoidella</i> (Vallot)	0	2
Lepidoptera	Psychidae	<i>Proutia betulina</i> (Zeller)	0	4
Lepidoptera	Psychidae	<i>Psyche casta</i> (Pallas)	0	4
Lepidoptera	Psychidae	<i>Sterrhopterix fusca</i> (Haworth)	0	3
Lepidoptera	Pterophoridae	<i>Emmelina monodactyla</i> (Linnaeus)	1	0
Lepidoptera	Pyalidae	<i>Agrotera nemoralis</i> (Scopoli)	0	2
Lepidoptera	Pyalidae	<i>Conobathra repandana</i> (Fabricius)	0	9
Lepidoptera	Pyalidae	<i>Conobathra tumidana</i> (Dennis et Schiffermueller)	0	6
Lepidoptera	Pyalidae	<i>Phycita roborella</i> (Dennis et Schiffermueller)	1	6
Lepidoptera	Pyalidae	<i>Sitochroa verticalis</i> (Linnaeus)	0	1
Lepidoptera	Pyalidae	<i>Udea</i> sp.* [TPYRA001]	1	0
Lepidoptera	Roeslerstammiidae	<i>Roeslerstammia erxebella</i> (Fabricius)	5	0
Lepidoptera	Saturniidae	<i>Aglia tau</i> (Linnaeus)	0	2
Lepidoptera	Sphingidae	<i>Laothoe populi</i> (Linnaeus)	1	0
Lepidoptera	Sphingidae	<i>Mimas tiliae</i> (Linnaeus)	1	0
Lepidoptera	Tortricidae	<i>Acleris fimbriana</i> (Thunberg)	0	1
Lepidoptera	Tortricidae	<i>Acleris forsskaleana</i> (Linnaeus)	2	0
Lepidoptera	Tortricidae	<i>Acleris rhombana</i> (Dennis et Schiffermueller)	0	22
Lepidoptera	Tortricidae	<i>Acleris</i> sp. [TTORT001]	1	0
Lepidoptera	Tortricidae	<i>Acleris sparsana</i> (Dennis et Schiffermueller)	1	8
Lepidoptera	Tortricidae	<i>Adoxophyes orana</i> (Fischer von Roeslerstamm)	1	0
Lepidoptera	Tortricidae	<i>Aleimma loeflingiana</i> (Linnaeus)	0	42
Lepidoptera	Tortricidae	<i>Ancylys apicella</i> (Dennis et Schiffermueller)	0	1
Lepidoptera	Tortricidae	<i>Ancylys mitterbacheriana</i> (Dennis et Schiffermueller)	0	115
Lepidoptera	Tortricidae	<i>Ancylys</i> sp. [TTORT002]	1	0
Lepidoptera	Tortricidae	<i>Archips crataeganus</i> (Huebner)	7	7
Lepidoptera	Tortricidae	<i>Archips podanus</i> (Scopoli)	2	4
Lepidoptera	Tortricidae	<i>Archips rosanus</i> (Linnaeus)	0	1
Lepidoptera	Tortricidae	<i>Archips xylosteanus</i> (Linnaeus)	5	3
Lepidoptera	Tortricidae	<i>Choristoneura diversana</i> (Huebner)	2	0
Lepidoptera	Tortricidae	<i>Choristoneura hebenstreitela</i> (Müller)	0	1
Lepidoptera	Tortricidae	<i>Epinotia signatana</i> (Douglas)	2	0
Lepidoptera	Tortricidae	<i>Eudemis porphyra</i> (Huebner)	16	0
Lepidoptera	Tortricidae	<i>Eudemis profundana</i> (Dennis et Schiffermueller)	0	1
Lepidoptera	Tortricidae	<i>Exapate congelatella</i> (Clerck)	0	73
Lepidoptera	Tortricidae	<i>Gypsonoma dealbana</i> (Froelich)	2	0
Lepidoptera	Tortricidae	<i>Hedya dimidiana</i> (Clerck)	1	0
Lepidoptera	Tortricidae	<i>Hedya pruniana</i> (Huebner)	0	30
Lepidoptera	Tortricidae	<i>Pammene spiniana</i> (Duponchel)	0	4
Lepidoptera	Tortricidae	<i>Pandemis cerasana</i> (Huebner)	4	12
Lepidoptera	Tortricidae	<i>Pandemis cinnamomeana</i> (Treitschke)	16	0
Lepidoptera	Tortricidae	<i>Pandemis corylana</i> (Fabricius)	4	25
Lepidoptera	Tortricidae	<i>Pandemis heparana</i> (Dennis et Schiffermueller)	3	13

Appendix S1		Continuing		
Order	Family	Species	Mor.	Slov.
Lepidoptera	Tortricidae	<i>Paramesia gnomana</i> (Clerck)	0	1
Lepidoptera	Tortricidae	<i>Ptycholoma lecheanum</i> (Linnaeus)	11	6
Lepidoptera	Tortricidae	<i>Spilonota ocellana</i> (Dennis et Schiffermueller)	0	15
Lepidoptera	Tortricidae	<i>Strophedra weirana</i> (Douglas)	0	12
Lepidoptera	Tortricidae	<i>Syndemis musculana</i> (Huebner)	0	4
Lepidoptera	Tortricidae	<i>Tortricodes alternellus</i> (Dennis et Schiffermueller)	0	24
Lepidoptera	Tortricidae	<i>Tortrix viridana</i> (Linnaeus)	0	50
Lepidoptera	Tortricidae	Unidentified* [TTORT003]	6	0
Lepidoptera	Tortricidae	<i>Zeiraphera isertana</i> (Fabricius)	1	10
Lepidoptera	Yponomeutidae	<i>Paraswammerdamia albicapitella</i> (Scharfenberg)	0	1
Lepidoptera	Yponomeutidae	<i>Prays fraxinellus</i> (Bjerkander)	1	0
Lepidoptera	Ypsolophidae	<i>Ypsolopha alpella</i> (Dennis et Schiffermueller)	0	13
Lepidoptera	Ypsolophidae	<i>Ypsolopha asperella</i> (Linnaeus)	0	28
Lepidoptera	Ypsolophidae	<i>Ypsolopha lucella</i> (Fabricius)	0	5
Lepidoptera	Ypsolophidae	<i>Ypsolopha parenthesella</i> (Linnaeus)	0	2
Lepidoptera	Ypsolophidae	<i>Ypsolopha sylvella</i> (Linnaeus)	0	5
Lepidoptera	Ypsolophidae	<i>Ypsolopha ustella</i> (Clerck)	3	34
Coleoptera	Buprestidae	<i>Agilus</i> sp. [TBUPR001]	2	
Coleoptera	Buprestidae	<i>Trachys minutus</i> (Linnaeus)	18	
Coleoptera	Chrysomelidae	<i>Agelastica alni</i> (Linnaeus)	134	
Coleoptera	Chrysomelidae	<i>Crepidodera aurata</i> (Marsham)	37	
Coleoptera	Chrysomelidae	<i>Crepidodera aurea</i> (Geoffroy)	127	
Coleoptera	Chrysomelidae	<i>Crepidodera fulvicornis</i> (Fabricius)	15	
Coleoptera	Chrysomelidae	<i>Cryptocephalus pusillus</i> Fabricius	9	
Coleoptera	Chrysomelidae	<i>Phratora vitellinae</i> (Linnaeus)	19	
Coleoptera	Chrysomelidae	<i>Pyrrhalta viburni</i> (Paykull)	1	
Coleoptera	Curculionidae	<i>Curculio glandium</i> Marsham	14	
Coleoptera	Curculionidae	<i>Curculio nucum</i> Linnaeus	2	
Coleoptera	Curculionidae	<i>Deporaus betulae</i> (Linnaeus)	5	
Coleoptera	Curculionidae	<i>Dorytomus dejeani</i> Faust	18	
Coleoptera	Curculionidae	<i>Dorytomus tortrix</i> (Linnaeus)	1	
Coleoptera	Curculionidae	<i>Furcipes rectirostris</i> (Linnaeus)	10	
Coleoptera	Curculionidae	<i>Liophloeus lentus</i> Germar	1	
Coleoptera	Curculionidae	<i>Magdalis armigera</i> (Fourcroy)	7	
Coleoptera	Curculionidae	<i>Phyllobius argentatus</i> (Linnaeus)	53	
Coleoptera	Curculionidae	<i>Phyllobius calcaratus</i> (Fabricius)	248	
Coleoptera	Curculionidae	<i>Phyllobius oblongus</i> (Linnaeus)	233	
Coleoptera	Curculionidae	<i>Phyllobius pomaceus</i> Gyllenhal	2	
Coleoptera	Curculionidae	<i>Polydrusus picus</i> (Fabricius)	7	
Coleoptera	Curculionidae	<i>Polydrusus pterygomalis</i> Boheman	10	
Coleoptera	Curculionidae	<i>Polydrusus sericeus</i> (Schaller)	87	
Coleoptera	Curculionidae	<i>Sciaphilus asperatus</i> (Bonsdorff)	27	
Coleoptera	Lagriidae	<i>Lagria hirta</i> (Linnaeus)	11	
Coleoptera	Scarabaeidae	<i>Melolontha melolontha</i> (Linnaeus)	1	
Hymenoptera	Tenthredinidae	<i>Macrophya annulomarginata</i> (Costa)	32	
Hymenoptera	Tenthredinidae	<i>Macrophya albicincta</i> (Schränk)	12	
Hymenoptera	Tenthredinidae	<i>Macrophya</i> sp. [TTENT003]	3	
Hymenoptera	Tenthredinidae	<i>Monosoma pulverata</i> (Retzius)	46	
Hymenoptera	Tenthredinidae	<i>Nematinus</i> sp. [TTENT004]	26	
Hymenoptera	Tenthredinidae	<i>Platycampus luridiventris</i> (Fallén)	4	
Hymenoptera	Tenthredinidae	<i>Craesus septentrionalis</i> (Linnaeus)	28	
Hymenoptera	Tenthredinidae	Unidentified* [TTENT006]	5	
Hymenoptera	Tenthredinidae	Unidentified* [TTENT007]	5	
Hymenoptera	Tenthredinidae	Unidentified* [TTENT008]	3	

Appendix S1 Continuing

Order	Family	Species	Mor.	Slov.
Hymenoptera	Tenthredinidae	<i>Mesoneura opaca</i> (Fabricius)	1	
Hymenoptera	Tenthredinidae	<i>Amauronematus krausi</i> (Taeger & Blank)	12	
Hymenoptera	Tenthredinidae	<i>Nematus</i> sp. [TTENT011]	1	
Hymenoptera	Tenthredinidae	<i>Nematus</i> sp. [TTENT012]	3	
Hymenoptera	Tenthredinidae	<i>Trichiocampus grandis</i> (Serville)	4	
Hymenoptera	Tenthredinidae	Unidentified* [TTENT014]	1	
Hymenoptera	Tenthredinidae	Unidentified* [TTENT015]	1	
Hymenoptera	Tenthredinidae	<i>Nematus</i> sp. [TTENT016]	1	
Hymenoptera	Tenthredinidae	Unidentified* [TTENT017]	1	
Hymenoptera	Tenthredinidae	Unidentified* [TTENT018]	2	
Hymenoptera	Tenthredinidae	<i>Caliroa annulipes</i> (Klug)	3	
Hymenoptera	Tenthredinidae	Unidentified* [TTENT020]	12	
Hymenoptera	Tenthredinidae	<i>Pristiphora</i> sp. [TTENT021]	9	
Hymenoptera	Tenthredinidae	<i>Macrophya</i> sp. [TTENT022]	6	
Hymenoptera	Tenthredinidae	<i>Craesus brischkei</i> (Zaddach)	1	
Hymenoptera	Tenthredinidae	<i>Tenthredo ferruginea</i> (Schrank)	2	
Hymenoptera	Tenthredinidae	Unidentified* [TTENT025]	1	
Hymenoptera	Tenthredinidae	Unidentified* [TTENT026]	1	
Hymenoptera	Tenthredinidae	Unidentified* [TTENT027]	3	
Hymenoptera	Tenthredinidae	Unidentified* [TTENT028]	1	
Hymenoptera	Tenthredinidae	Unidentified* [TTENT029]	1	
Hymenoptera	Tenthredinidae	Unidentified* [TTENT030]	1	

Appendix S2. Taxonomy of herbivore species from Papua New Guinea and the number of individuals in the two data sets combined (N). Morphospecies with unknown adult stages are marked with an asterisk. Morphospecies codes are used for unidentified species.

Order	Family	Species	N
Lepidoptera	Arctiidae	" <i>Asura</i> " <i>pallida</i> Rothschild	1
Lepidoptera	Arctiidae	<i>Chamaia metamelaena</i> Hampson	2
Lepidoptera	Arctiidae	<i>Lambula agraphia</i> Hampson	1
Lepidoptera	Arctiidae	<i>Spilosoma niceta</i> Stoll	4
Lepidoptera	Choreutidae	<i>Brenthia</i> sp. [CHOR009]	236
Lepidoptera	Choreutidae	<i>Brenthia</i> sp. [CHOR008]	194
Lepidoptera	Choreutidae	<i>Brenthia</i> sp. [CHOR002]	70
Lepidoptera	Choreutidae	<i>Brenthia</i> sp. [CHOR007]	1
Lepidoptera	Choreutidae	<i>Brenthia</i> sp.* [TORT015]	1
Lepidoptera	Choreutidae	<i>Brenthia</i> sp. nov. [CHOR001]	34
Lepidoptera	Choreutidae	<i>Brenthia</i> cf. <i>albimaculana</i> (Snellen)	96
Lepidoptera	Choreutidae	<i>Choreutis basalis</i> (Felder & Rogenhofer)	13
Lepidoptera	Choreutidae	<i>Choreutis chi</i> (Durrant)	14
Lepidoptera	Choreutidae	<i>Choreutis lutescens</i> (Felder & Rogenhofer)	214
Lepidoptera	Choreutidae	<i>Choreutis</i> sp. [TORT025]	1
Lepidoptera	Choreutidae	<i>Choreutis</i> cf. <i>anthorma</i> (Meyrick)	779
Lepidoptera	Choreutidae	Unidentified* [CHOR006]	12
Lepidoptera	Crambidae	" <i>Coelorhyncidia</i> " spp. complex [CRAM041]	1
Lepidoptera	Crambidae	" <i>Sylepta</i> " <i>solilucis</i> Hampson	1
Lepidoptera	Crambidae	<i>Agrotera</i> cf. <i>effertalis</i> Walker	1
Lepidoptera	Crambidae	<i>Conogethes punctiferalis</i> spp. complex	1
Lepidoptera	Crambidae	<i>Cotachena fuscimarginalis</i> Hampson	484
Lepidoptera	Crambidae	<i>Cotachena histricalis</i> (Walker)	2
Lepidoptera	Crambidae	<i>Cotachena</i> sp. nov. [CRAM061]	7
Lepidoptera	Crambidae	<i>Cydalima marginalis</i> (Kenrick)	48
Lepidoptera	Crambidae	<i>Glyphodes margaritaria</i> (Cramer)	69
Lepidoptera	Crambidae	<i>Glyphodes pseudocaesalis</i> Kenrick	973
Lepidoptera	Crambidae	<i>Glyphodes</i> cf. <i>stolalis</i> Guenee	3
Lepidoptera	Crambidae	<i>Haritalodes multilinalis</i> (Guenee)	85
Lepidoptera	Crambidae	<i>Herpetogramma bipunctalis</i> spp. complex	1
Lepidoptera	Crambidae	<i>Herpetogramma platycapna</i> (Meyrick)	4
Lepidoptera	Crambidae	<i>Merotoma medinalis</i> (Snellen)	3
Lepidoptera	Crambidae	<i>Musotima vagilinealis</i> (Hampson)	60
Lepidoptera	Crambidae	<i>Nosophora fulvalis</i> Hampson	1
Lepidoptera	Crambidae	cf. <i>Omiodes</i> sp. [PYRA006]	1
Lepidoptera	Crambidae	<i>Orthospila</i> sp. [CRAM013]	56
Lepidoptera	Crambidae	<i>Pagyda</i> cf. <i>ochrealis</i> Whalley	10
Lepidoptera	Crambidae	<i>Parotis</i> cf. <i>marginata</i> (Hampson)	6
Lepidoptera	Crambidae	<i>Parotis suralis</i> (Lederer)	1
Lepidoptera	Crambidae	<i>Pleuroptya sabinusalis</i> (Walker)	2
Lepidoptera	Crambidae	<i>Prophantis adusta</i> Inoue	2
Lepidoptera	Crambidae	<i>Prorodes mimica</i> Swinhoe	1
Lepidoptera	Crambidae	<i>Pycnarmon jaguaralis papualis</i> Munroe	211
Lepidoptera	Crambidae	<i>Pycnarmon</i> cf. <i>dryocentra</i> Meyrick	3
Lepidoptera	Crambidae	<i>Syllepte planefflava</i> Hampson	27
Lepidoptera	Crambidae	<i>Talanga deliciosa</i> (Butler)	43
Lepidoptera	Crambidae	<i>Talanga excelsalis moresbyensis</i> (Strand)	314
Lepidoptera	Crambidae	<i>Talanga polyzonalis</i> (Hampson)	51
Lepidoptera	Crambidae	<i>Talanga sexpunctalis</i> (Moore)	136
Lepidoptera	Crambidae	Unidentified [CRAM024]	6

Appendix 2		Continuing	
Order	Family	Species	N
Lepidoptera	Crambidae	Unidentified [CRAM022]	1
Lepidoptera	Crambidae	Unidentified* [CRAM062]	15
Lepidoptera	Elachistidae	<i>Agriophara</i> sp. [XXXX081]	7
Lepidoptera	Elachistidae	cf. <i>Peritormenta</i> sp. [XXXX094]	220
Lepidoptera	Elachistidae	cf. <i>Peritormenta</i> sp. [XXXX093]	72
Lepidoptera	Elachistidae	<i>Peritormenta</i> sp. [XXXX097]	4
Lepidoptera	Gelechiidae	<i>Dichomeris ochreoviridella</i> (Pagenstecher)	288
Lepidoptera	Gelechiidae	<i>Dichomeris</i> sp. [XXXX095]	380
Lepidoptera	Gelechiidae	<i>Dichomeris</i> sp. [XXXX076]	294
Lepidoptera	Gelechiidae	<i>Dichomeris</i> sp. [XXXX068]	27
Lepidoptera	Gelechiidae	cf. <i>Dichomeris</i> sp. [XXXX079]	8
Lepidoptera	Gelechiidae	Unidentified [TORT055]	4
Lepidoptera	Geometridae	" <i>Prasinocyma</i> " <i>nivisparsa</i> (Buttler)	18
Lepidoptera	Geometridae	<i>Aplochlora subflava</i> Warren	8
Lepidoptera	Geometridae	<i>Aplochlora vivalaca</i> Walker	13
Lepidoptera	Geometridae	<i>Berta</i> sp. [GEOM069]	74
Lepidoptera	Geometridae	<i>Bosara</i> sp. nov. [XXXX067]	6
Lepidoptera	Geometridae	<i>Catoria delectaria</i> (Walker)	1
Lepidoptera	Geometridae	<i>Chrysocraspeda fasciata</i> Warren	219
Lepidoptera	Geometridae	<i>Cleora repetita</i> Butler	1
Lepidoptera	Geometridae	<i>Cleora</i> sp. [GEOM005]	1
Lepidoptera	Geometridae	<i>Ectropis bhurmitra</i> (Walker)	57
Lepidoptera	Geometridae	<i>Eucyclodes albilauta</i> (Warren)	25
Lepidoptera	Geometridae	<i>Gymnoscelis lavella</i> Prout	2
Lepidoptera	Geometridae	<i>Gymnoscelis</i> cf. <i>polyclealis</i> Walker	2
Lepidoptera	Geometridae	<i>Hypomecis infaustaria</i> Walker	16
Lepidoptera	Geometridae	<i>Hyposidra incomptaria</i> Walker	23
Lepidoptera	Geometridae	<i>Hyposidra talaca</i> Walker	19
Lepidoptera	Geometridae	<i>Idiochlora celataria</i> (Walker)	1
Lepidoptera	Geometridae	<i>lulotricia semiumbrata</i> Warren	2
Lepidoptera	Geometridae	<i>Oenospila stellata</i> Warren	699
Lepidoptera	Geometridae	<i>Ozola indefensa</i> Warren	284
Lepidoptera	Geometridae	<i>Paradromula xylinopa</i> Meyrick	1
Lepidoptera	Geometridae	<i>Peridelias</i> cf. <i>aprosita</i> Turner	5
Lepidoptera	Geometridae	<i>Pingasa chlora</i> Stoll	6
Lepidoptera	Geometridae	<i>Scopula amala</i> Meyrick	5
Lepidoptera	Geometridae	<i>Thalassodes albifusa</i> (Warren)	76
Lepidoptera	Geometridae	<i>Thalassodes</i> cf. <i>sundissecta</i> Holloway	2
Lepidoptera	Geometridae	Unidentified* [GEOM092]	5
Lepidoptera	Geometridae	Unidentified* [GEOM025]	4
Lepidoptera	Geometridae	Unidentified* [GEOM086]	4
Lepidoptera	Geometridae	Unidentified* [GEOM087]	3
Lepidoptera	Geometridae	Unidentified* [GEOM091]	3
Lepidoptera	Geometridae	Unidentified* [GEOM090]	2
Lepidoptera	Geometridae	Unidentified* [GEOM096]	2
Lepidoptera	Geometridae	Unidentified* [GEOM098]	2
Lepidoptera	Geometridae	Unidentified* [GEOM026]	1
Lepidoptera	Geometridae	Unidentified* [GEOM057]	1
Lepidoptera	Geometridae	Unidentified* [GEOM062]	1
Lepidoptera	Geometridae	Unidentified* [GEOM089]	1
Lepidoptera	Geometridae	Unidentified* [GEOM093]	1
Lepidoptera	Geometridae	Unidentified* [GEOM094]	1
Lepidoptera	Geometridae	Unidentified* [GEOM095]	1
Lepidoptera	Gracillariidae	Unidentified [XXXX078]	13

Order	Family	Species	N
Lepidoptera	Gracillariidae	<i>Conopomorpha cramerella</i> (Snellen)	1
Lepidoptera	Hesperiidae	Unidentified* [HESP003]	1
Lepidoptera	Hyblaeidae	<i>Hyblaea constellata</i> Guenee	12
Lepidoptera	Hyblaeidae	<i>Hyblaea</i> cf. <i>puera</i> Cramer	12
Lepidoptera	Immidae	<i>Imma niphopelta</i> Meyrick	1
Lepidoptera	Immidae	<i>Imma</i> sp. [TORT122]	2
Lepidoptera	Immidae	<i>Moca congrualis</i> (Walsingham)	29
Lepidoptera	Lecithoceridae	<i>Scythropiodes</i> cf. <i>perissa</i> (Diakonoff)	2
Lepidoptera	Limacodidae	<i>Mambara robigonosa</i> Hering	3
Lepidoptera	Limacodidae	<i>Pinzulenza</i> cf. <i>kukisch</i> Hering	1
Lepidoptera	Limacodidae	<i>Scopelodes nitens</i> Bethune-Baker	110
Lepidoptera	Limacodidae	<i>Thosea monoloncha</i> (Meyrick)	1
Lepidoptera	Limacodidae	Unidentified* [LIMA018]	19
Lepidoptera	Limacodidae	Unidentified* [LIMA008]	13
Lepidoptera	Limacodidae	Unidentified* [LIMA007]	3
Lepidoptera	Limacodidae	Unidentified* [LIMA004]	2
Lepidoptera	Limacodidae	Unidentified* [LIMA010]	1
Lepidoptera	Limacodidae	Unidentified* [LIMA011]	1
Lepidoptera	Limacodidae	Unidentified* [LIMA019]	1
Lepidoptera	Limacodidae	Unidentified* [LIMA020]	1
Lepidoptera	Lycaenidae	<i>Arhopala meander</i> (Boisduval)	40
Lepidoptera	Lycaenidae	<i>Hypochrysops plotnius</i> Grose-Smith	4
Lepidoptera	Lycaenidae	<i>Hypolycaena phorbis</i> (Fabricius)	6
Lepidoptera	Lycaenidae	<i>Philiris helena</i> (Snellen)	83
Lepidoptera	Lycaenidae	<i>Philiris ziska</i> (Grose-Smith)	1
Lepidoptera	Lycaenidae	Unidentified* [LYCA011]	2
Lepidoptera	Lycaenidae	Unidentified* [LYCA013]	1
Lepidoptera	Lycaenidae	Unidentified* [LYCA014]	1
Lepidoptera	Lycaenidae	Unidentified* [LYCA016]	1
Lepidoptera	Lycaenidae	Unidentified* [LYCA017]	1
Lepidoptera	Lymantriidae	<i>Arctornis</i> sp. [LYMA016]	4
Lepidoptera	Lymantriidae	<i>Arctornis</i> cf. <i>intacta</i> Walker	23
Lepidoptera	Lymantriidae	<i>Arna</i> sp. [LYMA040]	13
Lepidoptera	Lymantriidae	<i>Artaxa</i> sp. [LYMA015]	3
Lepidoptera	Lymantriidae	<i>Artaxa</i> sp. [LYMA053]	1
Lepidoptera	Lymantriidae	<i>Artaxa</i> sp. [LYMA054]	1
Lepidoptera	Lymantriidae	<i>Artaxa</i> sp. [LYMA037]	1
Lepidoptera	Lymantriidae	<i>Dura</i> cf. <i>marginepunctata</i> Bethune-Baker	1
Lepidoptera	Lymantriidae	<i>Euproctis</i> sp. [LYMA003]	7
Lepidoptera	Lymantriidae	<i>Olene</i> cf. <i>mendoza</i> Huebner	16
Lepidoptera	Lymantriidae	<i>Orvasca</i> sp. [LYMA014]	1
Lepidoptera	Lymantriidae	<i>Orvasca</i> sp. [LYMA051]	1
Lepidoptera	Lymantriidae	<i>Somena alba</i> (Bethune-Baker)	3
Lepidoptera	Lymantriidae	<i>Teia</i> cf. <i>dewara</i> (Swinhoe)	8
Lepidoptera	Lymantriidae	Unidentified (Nygmiini) [LYMA002]	12
Lepidoptera	Lymantriidae	Unidentified (Nygmiini) [LYMA013]	3
Lepidoptera	Lymantriidae	Unidentified (Nygmiini) [LYMA038]	2
Lepidoptera	Lymantriidae	Unidentified* [LYMA044]	19
Lepidoptera	Lymantriidae	Unidentified* [LYMA031]	15
Lepidoptera	Lymantriidae	Unidentified* [LYMA043]	5
Lepidoptera	Lymantriidae	Unidentified* [LYMA009]	3
Lepidoptera	Lymantriidae	Unidentified* [LYMA045]	3
Lepidoptera	Lymantriidae	Unidentified* [LYMA022]	2
Lepidoptera	Lymantriidae	Unidentified* [LYMA025]	2

Order	Family	Species	N
Lepidoptera	Lymantriidae	Unidentified* [LYMA006]	1
Lepidoptera	Lymantriidae	Unidentified* [LYMA023]	1
Lepidoptera	Noctuidae	<i>Asota heliconia</i> (Linnaeus)	10
Lepidoptera	Noctuidae	<i>Asota orbona</i> Voll.	1
Lepidoptera	Noctuidae	<i>Autoba abrupta</i> (Walker)	1
Lepidoptera	Noctuidae	<i>Avatha pulcherima</i> (Butler)	3
Lepidoptera	Noctuidae	<i>Mecistoptera franzwagneri</i> Lodl	22
Lepidoptera	Noctuidae	<i>Plecoptera violacea</i> Pagenstecher	260
Lepidoptera	Noctuidae	<i>Rusicada revocans</i> (Walker)	1
Lepidoptera	Noctuidae	<i>Savara latimargo</i> Walker	2
Lepidoptera	Noctuidae	<i>Simplicia notata</i> (Butler)	1
Lepidoptera	Noctuidae	Unidentified* [NOCT058]	4
Lepidoptera	Noctuidae	Unidentified* [NOCT060]	4
Lepidoptera	Noctuidae	Unidentified* [NOCT040]	2
Lepidoptera	Noctuidae	Unidentified* [NOCT001]	1
Lepidoptera	Noctuidae	Unidentified* [NOCT006]	1
Lepidoptera	Noctuidae	Unidentified* [NOCT007]	1
Lepidoptera	Noctuidae	Unidentified* [NOCT028]	1
Lepidoptera	Noctuidae	Unidentified* [NOCT042]	1
Lepidoptera	Noctuidae	Unidentified* [NOCT056]	1
Lepidoptera	Noctuidae	Unidentified* [NOCT059]	1
Lepidoptera	Noctuidae	Unidentified* [NOCT061]	1
Lepidoptera	Noctuidae	Unidentified* [NOCT062]	1
Lepidoptera	Nolidae	<i>Gadirtha inexacta buruensis</i> Prout	51
Lepidoptera	Nolidae	<i>Lophothripa vitea</i> Swinhoe	4
Lepidoptera	Notodontidae	<i>Stauropus</i> sp. [NOTO002]	1
Lepidoptera	Nymphalidae	<i>Cyrestis acilia</i> Godart	62
Lepidoptera	Nymphalidae	<i>Euploea algea</i> Godart	1
Lepidoptera	Nymphalidae	<i>Euploea leucosticos</i> Gmelin	95
Lepidoptera	Nymphalidae	<i>Neptis satina</i> Grose-Smith	28
Lepidoptera	Nymphalidae	<i>Polyura jupiter</i> (Butler)	15
Lepidoptera	Nymphalidae	Unidentified* [NYMP004]	4
Lepidoptera	Nymphalidae	Unidentified* [NYMP003]	1
Lepidoptera	Oecophoridae	<i>Delonoma pyrroplecta</i> Meyrick	1
Lepidoptera	Peleopodidae	<i>Acria sciogramma</i> Meyrick	7
Lepidoptera	Psychidae	<i>Eumeta variegata</i> (Snellen)	14
Lepidoptera	Psychidae	<i>Mahasena andamana</i> Moore	2
Lepidoptera	Psychidae	<i>Oiketicus</i> sp. [PSYC006]	68
Lepidoptera	Psychidae	Unidentified [PSYC005]	53
Lepidoptera	Psychidae	Unidentified [XXXX006]	7
Lepidoptera	Psychidae	Unidentified [PSYC002]	2
Lepidoptera	Psychidae	Unidentified [PSYC018]	1
Lepidoptera	Psychidae	Unidentified* [PSYC008]	9
Lepidoptera	Psychidae	Unidentified* [PSYC011]	5
Lepidoptera	Psychidae	Unidentified* [PSYC009]	4
Lepidoptera	Psychidae	Unidentified* [PSYC015]	1
Lepidoptera	Pterophoridae	<i>Cosmoclostis</i> sp. [PTER002]	54
Lepidoptera	Pyalidae	<i>Orthaga melanoperalis</i> Hampson	143
Lepidoptera	Pyalidae	<i>Orthaga</i> cf. <i>percnodes</i> Turner	17
Lepidoptera	Pyalidae	" <i>Pseudocera</i> " <i>trissosticha</i> (Turner)	8
Lepidoptera	Pyalidae	<i>Sacada albiocularis</i> Hampson	1
Lepidoptera	Pyalidae	<i>Unadophanes trissomita</i> (Turner)	231
Lepidoptera	Roeslerstammiidae	<i>Vanicela</i> sp. [PTER003]	8
Lepidoptera	Saturniidae	<i>Coscinocera</i> sp.* [SATU001]	3

Appendix 2		Continuing	
Order	Family	Species	N
Lepidoptera	Sphingidae	<i>Macroglossum inspida papuanum</i> Rothsch. et Jordan	1
Lepidoptera	Sphingidae	Unidentified [SPHI003]	1
Lepidoptera	Sphingidae	Unidentified* [SPHI001]	1
Lepidoptera	Thyrididae	<i>Addaea pusilla</i> (Butler)	74
Lepidoptera	Thyrididae	<i>Aglaopus leprosa</i> (Warren)	4
Lepidoptera	Thyrididae	<i>Hypolamprus melilialis</i> (Swinhoe)	8
Lepidoptera	Thyrididae	<i>Mellea nitida</i> (Pagenstecher)	20
Lepidoptera	Thyrididae	<i>Mellea ordinaria</i> (Warren)	36
Lepidoptera	Thyrididae	<i>Mellea ramifera</i> (Warren)	43
Lepidoptera	Thyrididae	<i>Pharambora splendida</i> (Butler)	96
Lepidoptera	Thyrididae	<i>Rhodoneura aurata</i> (Butler)	15
Lepidoptera	Thyrididae	<i>Striglina asinina</i> Warren	17
Lepidoptera	Tortricidae	<i>Adoxophyes</i> sp. [TORT121]	2
Lepidoptera	Tortricidae	<i>Adoxophyes fasciculana</i> (Walker)	20
Lepidoptera	Tortricidae	<i>Adoxophyes perstricta</i> spp. complex	1
Lepidoptera	Tortricidae	<i>Adoxophyes</i> sp. [TORT022]	62
Lepidoptera	Tortricidae	<i>Adoxophyes</i> sp. [TORT094]	14
Lepidoptera	Tortricidae	<i>Adoxophyes</i> sp. [TORT165]	1
Lepidoptera	Tortricidae	<i>Adoxophyes templana</i> spp. complex	107
Lepidoptera	Tortricidae	<i>Adoxophyes thoracica</i> Diakonoff	80
Lepidoptera	Tortricidae	<i>Adoxophyes tripselia</i> (Lower)	48
Lepidoptera	Tortricidae	<i>Dudua</i> cf. <i>crossotoma</i> (Meyrick)	1
Lepidoptera	Tortricidae	<i>Eboda smaragdina</i> Walker	25
Lepidoptera	Tortricidae	<i>Gatesclarkeana pachnodes</i> (Meyrick)	54
Lepidoptera	Tortricidae	Gen. nov. sp. nov. [TORT110]	441
Lepidoptera	Tortricidae	Gen. cf. <i>Acroclita</i> sp. [TORT063]	5
Lepidoptera	Tortricidae	<i>Heleanna</i> sp. [TORT065]	47
Lepidoptera	Tortricidae	<i>Heleanna</i> sp. [TORT077]	1
Lepidoptera	Tortricidae	<i>Homona aestivana</i> (Walker)	3
Lepidoptera	Tortricidae	<i>Homona mermerodes</i> Meyrick	68
Lepidoptera	Tortricidae	<i>Homona salaconis complex</i> (Meyrick)	5
Lepidoptera	Tortricidae	<i>Homona trachyptera</i> Diakonoff	12
Lepidoptera	Tortricidae	<i>Pareboda prosecta</i> Razowski	1
Lepidoptera	Tortricidae	<i>Sorolopha epichares</i> Diakonoff	1
Lepidoptera	Tortricidae	<i>Sorolopha</i> cf. <i>elaeodes</i> Lower	1
Lepidoptera	Tortricidae	<i>Statherotis leucapsis</i> (Meyrick)	11
Lepidoptera	Tortricidae	Unidentified [TORT130]	2
Lepidoptera	Tortricidae	<i>Xenothictis gnetivora</i> Brown, Miller et Horak	31
Lepidoptera	Unidentified	Unidentified* [XXXX004]	1
Lepidoptera	Unidentified	Unidentified* [XXXX010]	1
Lepidoptera	Unidentified	Unidentified* [XXXX012]	1
Lepidoptera	Unidentified	Unidentified* [XXXX084]	1
Lepidoptera	Unidentified	Unidentified* [XXXX085]	1
Lepidoptera	Unidentified	Unidentified* [XXXX086]	1
Lepidoptera	Uraniidae	<i>Dysaethria particolor</i> (Warren)	1
Lepidoptera	Uraniidae	<i>Europlema niveosaria</i> (Walker)	141
Lepidoptera	Uraniidae	<i>Europlema semibrunnea</i> (Pagenstecher)	310
Lepidoptera	Uraniidae	<i>Platerosia rotundipennis</i> Warren	127
Lepidoptera	Uraniidae	<i>Platerosia</i> cf. <i>rotundipennis</i> Warren	149
Lepidoptera	Uraniidae	Unidentified* [URAN006]	9
Lepidoptera	Xyloryctidae	Unidentified [XXXX098]	1
Coleoptera	Anthribidae	<i>Xenocerus equestris</i> Pascoe	2
Coleoptera	Anthribidae	<i>Xenocerus</i> cf. <i>equestris</i> Pascoe	1
Coleoptera	Anthribidae	Unidentified [ANTR003]	1

Order	Family	Species	N
Coleoptera	Brentidae	<i>Ectocemus decimmaculatus</i> Montrozier	1
Coleoptera	Brentidae	<i>Orychodes digramma</i> Boisduval	1
Coleoptera	Brentidae	Unidentified [BREN003]	1
Coleoptera	Brentidae	Unidentified [BREN006]	1
Coleoptera	Brentidae	Unidentified [BREN009]	1
Coleoptera	Buprestidae	<i>Dicercomorpha multipunctata</i> Deyrolle	1
Coleoptera	Buprestidae	<i>Habroloma</i> sp. [BUPR002]	13
Coleoptera	Buprestidae	<i>Sambus</i> sp. [BUPR004]	8
Coleoptera	Cerambycidae	<i>Cylindrepomus</i> sp. [CERA026]	4
Coleoptera	Cerambycidae	<i>Dihammus holotrephus</i> Boisduval	1
Coleoptera	Cerambycidae	<i>Dihammus australis</i> (Boisduval)	8
Coleoptera	Cerambycidae	<i>Dihammus fasciatus</i> (Montrouzier)	11
Coleoptera	Cerambycidae	<i>Dihammus</i> sp. [CERA059]	1
Coleoptera	Cerambycidae	<i>Dihammus</i> sp. [CERA051]	1
Coleoptera	Cerambycidae	<i>Eczemotes</i> sp. [CERA106]	1
Coleoptera	Cerambycidae	<i>Epepeotes rarus</i> Thomson	21
Coleoptera	Cerambycidae	<i>Glenea picta</i> Pascoe	65
Coleoptera	Cerambycidae	<i>Glenea</i> sp. [CERA045]	11
Coleoptera	Cerambycidae	<i>Glenea</i> sp. [CERA058]	4
Coleoptera	Cerambycidae	<i>Glenea</i> sp. [CERA056]	1
Coleoptera	Cerambycidae	<i>Gnoma antilope</i> Boisduval	31
Coleoptera	Cerambycidae	<i>Mulciber linnei</i> Thomson	2
Coleoptera	Cerambycidae	<i>Mynonebra</i> sp. [CERA012]	3
Coleoptera	Cerambycidae	<i>Olenecamptus bilobus</i> Dillon et Dillon	2
Coleoptera	Cerambycidae	<i>Pelargoderus</i> cf. <i>arouensis</i> (Thomson)	9
Coleoptera	Cerambycidae	<i>Pelargoderus rubropunctatus</i> Guérin	1
Coleoptera	Cerambycidae	<i>Periaptodes testator</i> Pascoe	1
Coleoptera	Cerambycidae	<i>Prosoplus</i> sp. [CERA020]	10
Coleoptera	Cerambycidae	<i>Pterolophia</i> sp. [CERA024]	9
Coleoptera	Cerambycidae	<i>Pterolophia</i> sp. [CERA010]	6
Coleoptera	Cerambycidae	<i>Pterolophia</i> sp. [CERA081]	2
Coleoptera	Cerambycidae	<i>Pterolophia</i> sp. [CERA013]	1
Coleoptera	Cerambycidae	<i>Pterolophia</i> sp. [CERA105]	1
Coleoptera	Cerambycidae	<i>Rosenbergia mandibularis</i> Ritsema	2
Coleoptera	Cerambycidae	<i>Rosenbergia</i> sp. [CERA119]	1
Coleoptera	Cerambycidae	<i>Rosenbergia weiskei</i> Heller	1
Coleoptera	Cerambycidae	<i>Sphingnotus mirabilis</i> Boisduval	1
Coleoptera	Cerambycidae	<i>Sybra</i> sp. [CERA015]	2
Coleoptera	Cerambycidae	<i>Sybra</i> sp. [CERA052]	2
Coleoptera	Cerambycidae	<i>Sybra</i> sp. [CERA008]	1
Coleoptera	Cerambycidae	<i>Symphyletes</i> cf. <i>defloratus</i> Pascoe	11
Coleoptera	Cerambycidae	<i>Tmesisternus agrarius</i> Pascoe	13
Coleoptera	Cerambycidae	<i>Tmesisternus septempunctatus</i> Boisduval	10
Coleoptera	Cerambycidae	<i>Tmesisternus sulcatus</i> Aurivillius	1
Coleoptera	Cerambycidae	<i>Tmesisternus dissimilis</i> Pascoe	61
Coleoptera	Cerambycidae	<i>Tmesisternus marmoratus</i> Guerin	45
Coleoptera	Cerambycidae	<i>Tmesisternus nigrofasciatus</i> Aurivillius	7
Coleoptera	Cerambycidae	<i>Tmesisternus</i> cf. <i>longicollis</i> Gressitt	16
Coleoptera	Cerambycidae	<i>Tmesisternus oblongus</i> Boisduval	3
Coleoptera	Cerambycidae	<i>Tmesisternus politus</i> Blanchard	8
Coleoptera	Cerambycidae	<i>Tmesisternus pseudosuperans</i> Breuning	4
Coleoptera	Cerambycidae	<i>Tmesisternus</i> sp. [CERA021]	2
Coleoptera	Cerambycidae	<i>Tmesisternus trivittatus</i> Guerin-Meneville	23
Coleoptera	Cerambycidae	<i>Tmesisternus</i> sp. [CERA091]	1

Appendix 2

Continuing

Order	Family	Species	N
Coleoptera	Cerambycidae	<i>Tmesisternus</i> sp. [CERA101]	1
Coleoptera	Cerambycidae	<i>Trigonoptera guttulata</i> Gestro	1
Coleoptera	Cerambycidae	<i>Trigonoptera pseudomaculata</i> Breuning	5
Coleoptera	Cerambycidae	Unidentified [CERA025]	9
Coleoptera	Cerambycidae	Unidentified [CERA124]	4
Coleoptera	Cerambycidae	Unidentified [CERA007]	2
Coleoptera	Cerambycidae	Unidentified [CERA019]	2
Coleoptera	Cerambycidae	Unidentified [CERA031]	2
Coleoptera	Cerambycidae	Unidentified [CERA079]	2
Coleoptera	Cerambycidae	Unidentified [CERA082]	2
Coleoptera	Cerambycidae	Unidentified [CERA108]	2
Coleoptera	Cerambycidae	Unidentified [CERA026]	1
Coleoptera	Cerambycidae	Unidentified [CERA039]	1
Coleoptera	Cerambycidae	Unidentified [CERA070]	1
Coleoptera	Cerambycidae	Unidentified [CERA077]	1
Coleoptera	Cerambycidae	Unidentified [CERA078]	1
Coleoptera	Cerambycidae	Unidentified [CERA080]	1
Coleoptera	Cerambycidae	Unidentified [CERA084]	1
Coleoptera	Cerambycidae	Unidentified [CERA088]	1
Coleoptera	Cerambycidae	Unidentified [CERA092]	1
Coleoptera	Cerambycidae	Unidentified [CERA094]	1
Coleoptera	Cerambycidae	Unidentified [CERA095]	1
Coleoptera	Cerambycidae	Unidentified [CERA096]	1
Coleoptera	Cerambycidae	Unidentified [CERA118]	1
Coleoptera	Cerambycidae	Unidentified [CERA121]	1
Coleoptera	Cerambycidae	Unidentified [CERA122]	1
Coleoptera	Cerambycidae	<i>Xylotrechus australis</i> (Castelnau et Gory)	1
Coleoptera	Cerambycidae	<i>Xylotrechus variicollis</i> Fairmaire	1
Coleoptera	Chrysomelidae	<i>Atysa fulvicornis</i> Baly	2
Coleoptera	Chrysomelidae	<i>Atysa</i> sp. [CHRY004]	1
Coleoptera	Chrysomelidae	<i>Aulacophora propinqua</i> Baly	14
Coleoptera	Chrysomelidae	<i>Aulacophora</i> sp. [CHRY041]	23
Coleoptera	Chrysomelidae	<i>Aulacophora</i> sp. [CHRY110]	2
Coleoptera	Chrysomelidae	<i>Aulacophora</i> sp. [CHRY117]	1
Coleoptera	Chrysomelidae	<i>Aulacophora</i> sp. [CHRY127]	1
Coleoptera	Chrysomelidae	<i>Aulacophora</i> cf. <i>pallidifasciata</i> Jacoby	3
Coleoptera	Chrysomelidae	<i>Buphonida submarginata</i> Baly	565
Coleoptera	Chrysomelidae	<i>Cassena</i> sp. [CHRY091]	1
Coleoptera	Chrysomelidae	Unidentified [CHRY175]	1
Coleoptera	Chrysomelidae	<i>Cleorina</i> sp. [CHRY072]	73
Coleoptera	Chrysomelidae	<i>Deretrichia</i> sp. [CHRY104]	2
Coleoptera	Chrysomelidae	<i>Deretrichia</i> sp. [CHRY054]	246
Coleoptera	Chrysomelidae	<i>Deretrichia</i> sp. [CHRY108]	16
Coleoptera	Chrysomelidae	<i>Deretrichia</i> sp. [CHRY124]	12
Coleoptera	Chrysomelidae	<i>Deretrichia</i> sp. [CHRY147]	5
Coleoptera	Chrysomelidae	<i>Deretrichia</i> sp. [CHRY023]	4
Coleoptera	Chrysomelidae	<i>Deretrichia</i> sp. [CHRY076]	2
Coleoptera	Chrysomelidae	<i>Deretrichia</i> sp. [CHRY061]	1
Coleoptera	Chrysomelidae	<i>Di cladispa cincta</i> (Gestro)	21
Coleoptera	Chrysomelidae	<i>Lema staudingeri</i> Jacoby	5
Coleoptera	Chrysomelidae	<i>Lomirana</i> cf. <i>sulcipennis</i> Jacoby	46
Coleoptera	Chrysomelidae	<i>Melatia glochidionis</i> (Gressitt)	39
Coleoptera	Chrysomelidae	<i>Melatia</i> sp. [CHRY085]	5
Coleoptera	Chrysomelidae	<i>Melatia</i> sp. [CHRY090]	3

Appendix 2 Continuing

Order	Family	Species	N
Coleoptera	Chrysomelidae	<i>Microlepta</i> sp. [CHRY020]	48
Coleoptera	Chrysomelidae	<i>Monolepta signatipennis</i> Bryant	1
Coleoptera	Chrysomelidae	<i>Monolepta</i> sp. [CHRY120]	3
Coleoptera	Chrysomelidae	<i>Monolepta</i> sp. [CHRY060]	2
Coleoptera	Chrysomelidae	<i>Monolepta</i> sp. [CHRY088]	2
Coleoptera	Chrysomelidae	<i>Nisotra</i> or <i>Cassena</i> sp. [CHRY111]	2
Coleoptera	Chrysomelidae	<i>Nisotra</i> sp. [CHRY068]	40
Coleoptera	Chrysomelidae	<i>Poneridea australis</i> Boheman	31
Coleoptera	Chrysomelidae	<i>Prasyptera</i> sp. nr <i>ornata</i> Baly	110
Coleoptera	Chrysomelidae	<i>Promechus bimaculatus</i> (Weise)	159
Coleoptera	Chrysomelidae	<i>Rhyparida normalis</i> Gressitt	2
Coleoptera	Chrysomelidae	<i>Rhyparida basalis</i> Baly	6
Coleoptera	Chrysomelidae	<i>Rhyparida cacaovora</i> Gressitt	269
Coleoptera	Chrysomelidae	<i>Rhyparida calami</i> Gressitt	63
Coleoptera	Chrysomelidae	<i>Rhyparida coriacea</i> Jacoby	736
Coleoptera	Chrysomelidae	<i>Rhyparida dejecta</i> Gressitt	1
Coleoptera	Chrysomelidae	<i>Rhyparida fasciata</i> Baly	23
Coleoptera	Chrysomelidae	<i>Rhyparida fruhstorferi</i> Jacoby	34
Coleoptera	Chrysomelidae	<i>Rhyparida fulvicornis</i> Jacoby	2
Coleoptera	Chrysomelidae	<i>Rhyparida huona</i> Gressitt	403
Coleoptera	Chrysomelidae	<i>Rhyparida lineolata</i> Gressitt	102
Coleoptera	Chrysomelidae	<i>Rhyparida</i> cf. <i>basalis</i> Baly	1
Coleoptera	Chrysomelidae	<i>Rhyparida</i> cf. <i>impressipennis</i> Bryant	17
Coleoptera	Chrysomelidae	<i>Rhyparida picticollis</i> Gressitt	75
Coleoptera	Chrysomelidae	<i>Rhyparida pruinicollis</i> Gressitt	64
Coleoptera	Chrysomelidae	<i>Rhyparida sinuata</i> Gressitt	101
Coleoptera	Chrysomelidae	<i>Rhyparida</i> sp. [CHRY113]	5
Coleoptera	Chrysomelidae	<i>Rhyparida</i> sp. [CHRY027]	4
Coleoptera	Chrysomelidae	<i>Rhyparida</i> sp. [CHRY134]	3
Coleoptera	Chrysomelidae	<i>Rhyparida</i> sp. [CHRY140]	1
Coleoptera	Chrysomelidae	<i>Rhyparida</i> sp. [CHRY150]	1
Coleoptera	Chrysomelidae	<i>Rhyparida</i> sp. [CHRY152]	1
Coleoptera	Chrysomelidae	<i>Rhyparida</i> sp. [CHRY172]	1
Coleoptera	Chrysomelidae	<i>Rhyparida</i> or <i>Deretrichia</i> sp. [CHRY163]	1
Coleoptera	Chrysomelidae	<i>Rhyparidella casuarinae</i> Gressitt	1
Coleoptera	Chrysomelidae	<i>Rhyparidella sewana</i> group	26
Coleoptera	Chrysomelidae	<i>Rhyparidella sobrina</i> group	877
Coleoptera	Chrysomelidae	<i>Rhyparidella</i> sp. [CHRY012]	3
Coleoptera	Chrysomelidae	<i>Rhyparidella</i> sp. [CHRY022]	3
Coleoptera	Chrysomelidae	<i>Rhyparidella</i> sp. [CHRY032]	3
Coleoptera	Chrysomelidae	<i>Rhyparidella</i> sp. [CHRY044]	2
Coleoptera	Chrysomelidae	<i>Rhyparidella</i> sp. [CHRY006]	1
Coleoptera	Chrysomelidae	<i>Sastra limbata</i> Baly	3
Coleoptera	Chrysomelidae	<i>Sastra</i> sp. [CHRY033]	37
Coleoptera	Chrysomelidae	<i>Sastra</i> sp. [CHRY038]	27
Coleoptera	Chrysomelidae	<i>Stethotes lateralis</i> Baly	284
Coleoptera	Chrysomelidae	<i>Stethodes</i> cf. <i>melostomae</i> Gressitt	9
Coleoptera	Chrysomelidae	<i>Stethotes nigrifula</i> Baly	3
Coleoptera	Chrysomelidae	<i>Sutrea</i> sp. [CHRY142]	52
Coleoptera	Chrysomelidae	<i>Thyrasia</i> sp. [CHRY056]	31
Coleoptera	Chrysomelidae	<i>Trachyaphthona</i> sp. [CHRY158]	1
Coleoptera	Chrysomelidae	Unidentified [CHRY145]	11
Coleoptera	Chrysomelidae	Unidentified [CHRY126]	4
Coleoptera	Chrysomelidae	Unidentified [CHRY167]	3

Order	Family	Species	N
Coleoptera	Chrysomelidae	Unidentified [CHRY144]	2
Coleoptera	Chrysomelidae	Unidentified [CHRY029]	1
Coleoptera	Chrysomelidae	Unidentified [CHRY050]	1
Coleoptera	Chrysomelidae	Unidentified [CHRY070]	1
Coleoptera	Chrysomelidae	Unidentified [CHRY146]	1
Coleoptera	Coccinellidae	Unidentified [CHRY086]	1
Coleoptera	Curculionidae	<i>Aclees</i> sp. [CURC013]	1
Coleoptera	Curculionidae	<i>Alcidodes australis</i> Boisduval	43
Coleoptera	Curculionidae	<i>Alcidodes elegans</i> (Guerin)	44
Coleoptera	Curculionidae	<i>Alcidodes praeustus</i> Guerin	5
Coleoptera	Curculionidae	<i>Apiocalus ebrius</i> Faust	668
Coleoptera	Curculionidae	<i>Behrensiellus glabratus</i> (Pascoe)	3
Coleoptera	Curculionidae	<i>Celeuthetes</i> sp. [CURC009]	2
Coleoptera	Curculionidae	<i>Deretiosus aridus</i> Pascoe	4
Coleoptera	Curculionidae	<i>Elytrocheilus ruficollis</i> Faust	86
Coleoptera	Curculionidae	<i>Eupholus geoffroyi</i> Heller	6
Coleoptera	Curculionidae	<i>Euthyrhinus albosparsus</i> Heller	1
Coleoptera	Curculionidae	<i>Imathia</i> cf. <i>unicolor</i> Pascoe	2
Coleoptera	Curculionidae	<i>Lobotrachelus</i> sp. [CURC045]	1
Coleoptera	Curculionidae	<i>Lobotrachelus</i> sp. [CURC020]	1
Coleoptera	Curculionidae	<i>Mechistocerus</i> sp. [CURC049]	1
Coleoptera	Curculionidae	<i>Microthetes</i> sp. [CURC015]	1
Coleoptera	Curculionidae	<i>Oribius</i> sp. [CURC033]	12
Coleoptera	Curculionidae	<i>Orthorhinus</i> sp. [CURC023]	6
Coleoptera	Curculionidae	<i>Rhinoscapha doriae</i> Pascoe	14
Coleoptera	Curculionidae	<i>Rhinoscapha tricolor</i> Faust	46
Coleoptera	Curculionidae	<i>Rhynocophorus</i> sp. [CURC048]	1
Coleoptera	Curculionidae	<i>Trigonopterus</i> sp. [CURC027]	1
Coleoptera	Curculionidae	Unidentified [CURC012]	1014
Coleoptera	Curculionidae	Unidentified [CURC010]	675
Coleoptera	Curculionidae	Unidentified [CURC001]	391
Coleoptera	Curculionidae	Unidentified [CURC087]	13
Coleoptera	Curculionidae	Unidentified [CURC006]	2
Coleoptera	Curculionidae	Unidentified [CURC031]	2
Coleoptera	Curculionidae	Unidentified [CURC039]	2
Coleoptera	Curculionidae	Unidentified [CURC044]	2
Coleoptera	Curculionidae	Unidentified [CURC052]	2
Coleoptera	Curculionidae	Unidentified [CURC004]	1
Coleoptera	Curculionidae	Unidentified [CURC025]	1
Coleoptera	Curculionidae	Unidentified [CURC028]	1
Coleoptera	Curculionidae	Unidentified [CURC034]	1
Coleoptera	Curculionidae	Unidentified [CURC074]	1
Coleoptera	Curculionidae	Unidentified [CURC076]	1
Coleoptera	Curculionidae	Unidentified [CURC067]	1
Coleoptera	Elateridae	<i>Agrypnus</i> sp. [ELAT004]	2
Coleoptera	Elateridae	<i>Lacon</i> sp. [ELAT002]	3
Coleoptera	Elateridae	<i>Neotrichophorus</i> sp. [ELAT021]	1
Coleoptera	Scarabaeidae	<i>Dicaulocephalus</i> sp. [SCAR001]	1
Coleoptera	Scarabaeidae	<i>Mimela</i> sp. [SCAR003]	1
Coleoptera	Tenebrionidae	<i>Holostrongylium gravidum</i> Fairmaire	1
Coleoptera	Tenebrionidae	Unidentified [CHRY115]	2
Coleoptera	Tenebrionidae	Unidentified [TENE003]	1
Coleoptera	Throscidae	<i>Drapetes</i> cf. <i>argenteopilosus</i>	1
Orthoptera	Acrididae	<i>Gesonula mundata</i> Walker	17

Order	Family	Species	N
Orthoptera	Acrididae	<i>Oxya japonica vitticollis</i> (Blanchard)	12
Orthoptera	Acrididae	<i>Rectitropis brunneri</i> Bolivar	36
Orthoptera	Acrididae	<i>Stenocatantops angustifrons</i> (Walker)	27
Orthoptera	Acrididae	<i>Valanga papuasica</i> Finot	109
Orthoptera	Acrididae	<i>Willemsea bimaculata</i> Willemse	3
Orthoptera	Eumastacidae	<i>Biroella bolivari polita</i> (Bolivar)	30
Orthoptera	Eumastacidae	<i>Mnesiclesina furcata</i> (Saussure)	22
Orthoptera	Eumastacidae	<i>Paramnesicles buergersi</i> (Bolivar)	38
Orthoptera	Pyrgomorphidae	<i>Atractomorpha crenaticeps</i> Blanchard	158
Orthoptera	Pyrgomorphidae	<i>Desmopterella biroi</i> (Bolivar)	648
Orthoptera	Pyrgomorphidae	<i>Menesesia novaeguineae</i> Willemse	34
Orthoptera	Pyrgomorphidae	<i>Stenoxyphus aurantiacus</i> (Karsch)	26
Orthoptera	Pyrgomorphidae	Unidentified [PYRG010]	1
Orthoptera	Tettigoniidae	<i>Aphroptera biroi</i> Bolivar	3
Orthoptera	Tettigoniidae	<i>Aucaloplacella</i> sp. [TETT011]	2
Orthoptera	Tettigoniidae	<i>Aucaloplacella</i> sp. [TETT061]	13
Orthoptera	Tettigoniidae	<i>Biroa</i> sp. [TETT041]	1
Orthoptera	Tettigoniidae	<i>Caedicia</i> sp. [TETT049]	5
Orthoptera	Tettigoniidae	<i>Caedicia</i> sp. [TETT034]	3
Orthoptera	Tettigoniidae	<i>Caedicia</i> sp. [TETT053]	1
Orthoptera	Tettigoniidae	<i>Conocephalus semivittatus</i> (Walker)	1
Orthoptera	Tettigoniidae	<i>Ducetia</i> sp. [TETT036]	4
Orthoptera	Tettigoniidae	<i>Eumecopoda cyrtoscelis</i> (Karsch)	4
Orthoptera	Tettigoniidae	<i>Eumecopoda</i> sp. [TETT019]	3
Orthoptera	Tettigoniidae	<i>Nicsara</i> cf. <i>taylori</i> Hebard	2
Orthoptera	Tettigoniidae	<i>Paradiaphlebus</i> sp. [TETT030]	1
Orthoptera	Tettigoniidae	<i>Phaneroptera</i> sp. [TETT023]	15
Orthoptera	Tettigoniidae	<i>Phrictaetypus</i> sp. [TETT009]	2
Orthoptera	Tettigoniidae	<i>Phyllophora</i> cf. <i>bispinosa</i> Karny	5
Orthoptera	Tettigoniidae	<i>Phyllophora</i> sp. [TETT001]	9
Orthoptera	Tettigoniidae	<i>Phyllophora</i> sp. [TETT012]	7
Orthoptera	Tettigoniidae	<i>Phyllophorella</i> sp. [TETT010]	4
Orthoptera	Tettigoniidae	<i>Pseudonicsara aerugifrons</i> (Karny)	1
Orthoptera	Tettigoniidae	<i>Psyra</i> sp. [TETT043]	3
Orthoptera	Tettigoniidae	<i>Psyra</i> sp. [TETT048]	3
Orthoptera	Tettigoniidae	<i>Psyra</i> sp. [TETT022]	143
Orthoptera	Tettigoniidae	<i>Sasima aequalis</i> Karny	9
Orthoptera	Tettigoniidae	<i>Sasima</i> sp. [TETT037]	2
Orthoptera	Tettigoniidae	<i>Segestidea</i> sp. [TETT031]	2
Orthoptera	Tettigoniidae	<i>Tympanoptera</i> cf. <i>burgersi</i> Beier	27
Orthoptera	Tettigoniidae	<i>Tympanoptera</i> sp. [TETT027]	4
Orthoptera	Tettigoniidae	Unidentified [TETT044]	21
Orthoptera	Tettigoniidae	Unidentified [TETT045]	18
Orthoptera	Tettigoniidae	Unidentified [TETT002]	11
Orthoptera	Tettigoniidae	Unidentified [TETT038]	11
Orthoptera	Tettigoniidae	Unidentified [TETT006]	8
Orthoptera	Tettigoniidae	Unidentified [TETT035]	8
Orthoptera	Tettigoniidae	Unidentified [TETT018]	5
Orthoptera	Tettigoniidae	Unidentified [TETT062]	5
Orthoptera	Tettigoniidae	Unidentified [TETT042]	3
Orthoptera	Tettigoniidae	Unidentified [TETT052]	3
Orthoptera	Tettigoniidae	Unidentified [TETT040]	2
Orthoptera	Tettigoniidae	Unidentified [TETT054]	2
Orthoptera	Tettigoniidae	Unidentified [TETT014]	1

Appendix 2		Continuing	
Order	Family	Species	N
Orthoptera	Tettigoniidae	Unidentified [TETT015]	1
Orthoptera	Tettigoniidae	Unidentified [TETT058]	1
Orthoptera	Tettigoniidae	Unidentified [TETT059]	1
Orthoptera	Tettigoniidae	Unidentified [TETT072]	1
Orthoptera	Tettigoniidae	Unidentified [TETT075]	1
Orthoptera	Tettigoniidae	Unidentified [TETT076]	1
Phasmatodea	Heteronemiidae	<i>Eupromachus acutangulus</i> (Brunner von Wattenwyl)	1
Phasmatodea	Heteronemiidae	<i>Leprocaulinus vipera</i> Kaup	2
Phasmatodea	Heteronemiidae	<i>Neopromachus lobatipes</i> (Brunner von Wattenwyl)	25
Phasmatodea	Heteronemiidae	<i>Neopromachus ramuensis</i> Gunther	3
Phasmatodea	Heteronemiidae	<i>Neopromachus vepres</i> Brunner von Wattenwyl	71
Phasmatodea	Heteronemiidae	<i>Neopromachus wallacei</i> (Westwood)	7
Phasmatodea	Heteronemiidae	<i>Sipyloidea pseudosipylus</i> Redtenbacher	3
Phasmatodea	Heteronemiidae	Unidentified [PHAS047]	1
Phasmatodea	Phasmatidae	<i>Anchiale maculata</i> (Olivier)	12
Phasmatodea	Phasmatidae	<i>Dimorphodes prosthesis serripes</i> Redtenbacher	40
Phasmatodea	Phasmatidae	<i>Eurycantha insularis</i> Lucas	9
Phasmatodea	Phasmatidae	<i>Neopromachus</i> sp. [PHAS022]	5
Phasmatodea	Phasmatidae	<i>Phasma</i> sp. [PHAS013]	1
Phasmatodea	Phasmatidae	Unidentified [PHAS007]	135
Phasmatodea	Phasmatidae	Unidentified [PHAS015]	1
Phasmatodea	Phasmatidae	Unidentified [PHAS043]	1